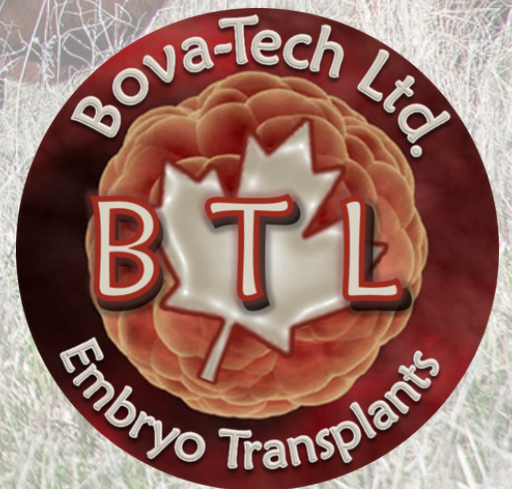


RED ANGUS

EMBRYOS

For Sale



Bova-Tech Ltd.

B T L



Embryos for Sale

www.bova-tech.com

(403) 332-1567

Red ACC

LAMBDA 1Z



CREED 214C



A blend of a well-known pedigrees and a top donor cow from Anderson cattle Co. Red ACC Lambda 1Z is a dark red, moderated framed with lots of muscle definition and a high milk EPD. She is the dam of Red ACC Bigshot 118E a bull that surprised everyone in the spring when he was purchased by a syndicate during the 2018 bull sale.

1Z is a very stylish smooth fronted cow with lot of eye appeal. She is a really good cow with another outstanding calve at side this year, weaned on August 14th weighing 751 pounds at around 6.5 months of age.

Herd sires with the ability to combine the power that Red Wheel Creed possesses with exceptional maternal strength in an outcross pedigree are rare to find. Creed has the length of spine, muscle expression, bone and foot size which he transmits into his calves. This bull is backed by an exceptional dam and cow family. Creed's dam, Black Wheel Jestress 1Y is a herd bull producing female. The Jestress cow family is noted for exceptional udders and hoof quality and being big ribbed productive females. A few straws of semen were available during the Pinnacle Sale in 2018, the quest for the very best Red Angus seedstock in Canada may be found. the significance of this great breeding bull is fully demonstrated throughout the pedigree, statistical information and the footnote discussion. this breeding bull, with progeny on the ground, is an opportunity to obtain the influence of one of the most dynamic breeding bulls in the industry today.



2020
Offspring



Donor Care Facility

Embryo Collection, Freezing & Transplants

IVF - In Vitro Fertilization

Export Certified

In-Clinic & On Farm Services

Recipient Programs

Bova-Tech Ltd.

P.O. Box 80142 Airdrie, Alberta T4B 2V8 Canada

Tel: (403) 332-1567 E-mail: info@bova-tech.com





RED ACC
Roxie 81C

Here is a smooth, long bodied feminine cow that comes from a well backed family. Her daughter 32F has been stealing the spotlight her whole life and made the championship drive in the Little Lady Classic at Ag Ex. Her dam and granddam pattern very similar to her, moderate framed, level udder floor, lots of capacity, shape and natural thickness.

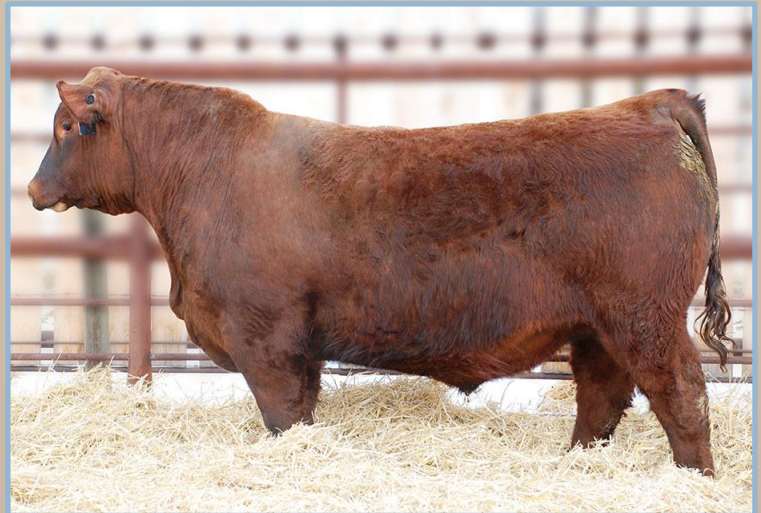


SSS

TYCOON

225E

Tycoon comes from the outstanding SSS program and has been used extensively in W Sunrise Angus and Y Coulee programs. He has an impressive profile, proud front and great feet and soundness with an impressive calving ease sire with a hard to fault pedigree. He is a dark red, masculine sire, that carries himself flawlessly in the bull pen. Consistency and phenotype speak for itself.



Donor Care Facility

Embryo Collection, Freezing & Transplants

IVF - In Vitro Fertilization

Export Certified

In-Clinic & On Farm Services

Recipient Programs

Bova-Tech Ltd.

P.O. Box 80142 Airdrie, Alberta T4B 2V8 Canada

Tel: (403) 332-1567 E-mail: info@bova-tech.com





RED ACC 13B

Tibbie



PIE

222

HOLLYWOOD



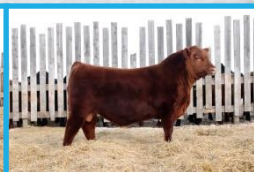
Red ACC Tibbie 13B is out of a very productive red cow. This red, moderate framed cow is made correct and true. She has a style and broodiness combined with a very unique pedigree. Red Tibbie is a feminine easy fleshing cow with a perfect udder and great rib.

Pie Hollywood is the world record selling Red Angus bull from the spring 2023 bull sale season, selling for \$400,000 valuation. His record setting appraisal is the result of his combination of curve bending calving ease and growth, breed leading carcass, captivating phenotype and is backed by the renown Abigrace cow family. We were not drawn to the bull by his outstanding numbers, but they are off the charts. We appreciate Hollywood for his massive phenotype and you couldn't put a better foot on a Red Angus bull.

2020 Son
Tibbie 13B x
Reckoning 149A
ACCI 117H

2020 Son
Tibbie 13B x
Mann Red Box
ACCI 119H

2020 Daughter
Tibbie 13B x
Mann Red Box
ACCI 47H



Donor Care Facility

Embryo Collection, Freezing & Transplants

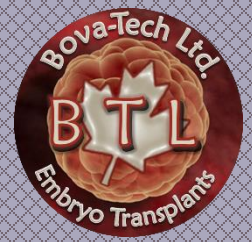
IVF - In Vitro Fertilization

Export Certified

In-Clinic & On Farm Services

Recipient Programs





RED ACC 13B
Tibbie



Red ACC Tibbie 13B is out of a very productive red cow. This red, moderate framed cow is made correct and true. She has a style and broodiness combined with a very unique pedigree. Red Tibbie is a feminine easy fleshing cow with a perfect udder and great rib.



SSS
TYCOON
225E



Tycoon comes from the outstanding SSS program and has been used extensively in W Sunrise Angus and Y Coulee programs. He has an impressive profile, proud front and great feet and soundness with an impressive calving ease sire with a hard to fault pedigree. He is a dark red, masculine sire, that carries himself flawlessly in the bull pen. Consistency and phenotype speak for itself.

Tycoon Sons



Donor Care Facility

Embryo Collection, Freezing & Transplants

IVF - In Vitro Fertilization

Export Certified

In-Clinic & On Farm Services

Recipient Programs



Bova-Tech Ltd.

B T L

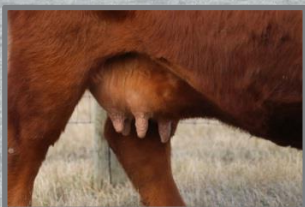
Embryos for Sale

www.bova-tech.com

(403) 332-1567



RED ACC 13B
Tibbie



Red ACC Tibbie 13B is out of a very productive red cow. This red, moderate framed cow is made correct and true. She has a style and broodiness combined with a very unique pedigree. Red Tibbie is a feminine easy fleshing cow with a perfect udder and great rib.

U-2
Reckoning 149A



High selling Red Angus to Six Mile for \$46,000 for 1/2 interest.

Reckoning progeny are the right kind of cattle with a superior foot quality, added volume and very important- easy to market. The list of high sellers sired by Reckoning is very impressive due to how its progeny works in the real world and show ring. value.



Daughters of Red U-2 Reckoning



Donor Care Facility

Embryo Collection, Freezing & Transplants

IVF - In Vitro Fertilization

Export Certified

In-Clinic & On Farm Services

Recipient Programs

Bova-Tech Ltd.

P.O. Box 80142 Airdrie, Alberta T4B 2V8 Canada
Tel: (403) 332-1567 E-mail: info@bova-tech.com



Bova-Tech Ltd.

B T L

Embryos for Sale

www.bova-tech.com

(403) 332-1567



Red ACC **TIBBIE** 98B



Red ACC Tibbie 98B has clean front structure, smooth makeup and refinement. This cow is admired for her sweet makeup and feminine features yet she is moderate and beefy.

With her easy-fleshing ability and exceptional mothering traits, 98B is a donor you won't want to miss using.



PIE

222

HOLLYWOOD



Pie Hollywood is the world record selling Red Angus bull from the spring 2023 bull sale season, selling for \$400,000 valuation. His record setting appraisal is the result of his combination of curve bending calving ease and growth, breed leading carcass, captivating phenotype and is backed by the renown Abigrace cow family. We were not drawn to the bull by his outstanding numbers, but they are off the charts. We appreciate Hollywood for his massive phenotype and you couldn't put a better foot on a Red Angus bull.

Donor Care Facility

Embryo Collection, Freezing & Transplants

IVF - In Vitro Fertilization

Export Certified

In-Clinic & On Farm Services

Recipient Programs



Bova-Tech Ltd.

**P.O. Box 80142 Airdrie, Alberta T4B 2V8 Canada
Tel: (403) 332-1567 E-mail: info@bova-tech.com**



Bova-Tech Ltd.

B T L

Embryos for Sale

www.bova-tech.com

(403) 332-1567



Red ACC **TIBBIE** 98B



Red ACC Tibbie 98B has clean front structure, smooth makeup and refinement. This cow is admired for her sweet makeup and feminine features yet she is moderate and beefy.

With her easy-fleshing ability and exceptional mothering traits, 98B is a donor you won't want to miss using.

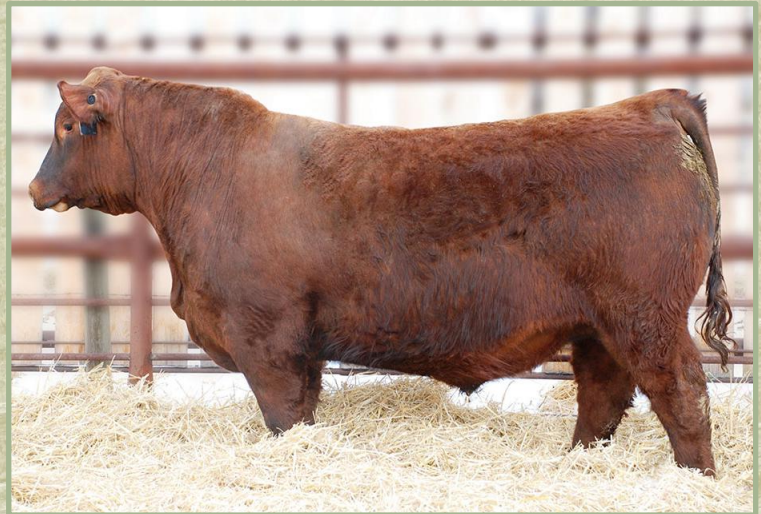


SSS

TYCOON

225E

Tycoon comes from the outstanding SSS program and has been used extensively in W Sunrise Angus and Y Coulee programs. He has an impressive profile, proud front and great feet and soundness with an impressive calving ease sire with a hard to fault pedigree. He is a dark red, masculine sire, that carries himself flawlessly in the bull pen. Consistency and phenotype speak for itself.

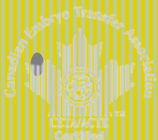


- Donor Care Facility**
- Embryo Collection, Freezing & Transplants**
- IVF - In Vitro Fertilization**
- Export Certified**
- In-Clinic & On Farm Services**
- Recipient Programs**

Bova-Tech Ltd.

P.O. Box 80142 Airdrie, Alberta T4B 2V8 Canada

Tel: (403) 332-1567 E-mail: info@bova-tech.com



Bova-Tech Ltd.

B T L

Embryos for Sale

www.bova-tech.com

(403) 332-1567



Red ACC **TIBBIE** 98B



Red ACC Tibbie 98B has clean front structure, smooth makeup and refinement. This cow is admired for her sweet makeup and feminine features yet she is moderate and beefy.

With her easy-fleshing ability and exceptional mothering traits, 98B is a donor you won't want to miss using.

RREDS **COMMON SENSE** G933

RREDS Common Sense G933 has all the mass and body of his sire. He is one of the most universal and complete bulls produced by Rhodes Red Angus. His mother is a coming 5 year old Code Red that hasn't missed. The Code red daughters have a way of raising high sellers.

Common Sense is one of the stoutest Seneca sons produced. If you are looking for the same body design as Seneca but want a bit more frame, Common Sense is a great choice. Great Angus character with high testosterone and athleticism.



Donor Care Facility

Embryo Collection, Freezing & Transplants

IVF - In Vitro Fertilization

Export Certified

In-Clinic & On Farm Services

Recipient Programs

Bova-Tech Ltd.

P.O. Box 80142 Airdrie, Alberta T4B 2V8 Canada
Tel: (403) 332-1567 E-mail: info@bova-tech.com



Red CCC
530C

Towaw Larkaba



PIE

222

HOLLYWOOD



Red CCC Towaw Larkaba 530C is dark red, deep bodied, long and feminine with a nice udder. She was a reserve Champion heifer at the 2016 Olds Fall Classic and Reserved Junior Yearling heifer at Farmfair International the same year.

Her maternal grandsire, Red TerRon Digger 11L, was a direct son of the great Ter-Ron Brandy 11C cow, and is the grand sire of the \$80,000 Red Cockburn Ribeye bull. He bred until he was 11 years old and was one of the soundest structured bulls ever used at Towaw. Her grandam, Larkaba 10M, is a direct Red Towaw Indeed 104H daughter.

Pie Hollywood is the world record selling Red Angus bull from the spring 2023 bull sale season, selling for \$400,000 valuation. His record setting appraisal is the result of his combination of curve bending calving ease and growth, breed leading carcass, captivating phenotype and is backed by the renown Abigrace cow family. We were not drawn to the bull by his outstanding numbers, but they are off the charts. We appreciate Hollywood for his massive phenotype and you couldn't put a better foot on a Red Angus bull.

**Semen
Production
& Freezing**

**Donor Care
Facility**

**Embryo Collection,
Freezing & Transplants**

**IVF - In Vitro
Fertilization**

**Export
Certified**

**In-Clinic & On
Farm Services**

**Recipient
Programs**

Bova-Tech Ltd.

P.O. Box 80142 Airdrie, Alberta T4B 2V8 Canada

Tel: (403) 332-1567 E-mail: info@bova-tech.com



Bova-Tech Ltd.

B T L

Embryos for Sale

www.bova-tech.com

(403) 332-1567



Red

LONE STONE

Beula

35H



Red Lone Stone Beula 35H is a very well-made female that is well-balanced. Beula is the complete package, an impressive cow with a small frame build (5.0 to 5.5 frame score). She has a very nice temperament, beautiful coat, solid feet, and perfect udder. The potential for 35H to become a very productive cow and raise outstanding offspring is already proven with her well-formed bull calf that hit the ground this year.



PIE

222

HOLLYWOOD

Pie Hollywood is the world record selling Red Angus bull from the spring 2023 bull sale season, selling for \$400,000 valuation. His record setting appraisal is the result of his combination of curve bending calving ease and growth, breed leading carcass, captivating phenotype and is backed by the renown Abigrace cow family. We were not drawn to the bull by his outstanding numbers, but they are off the charts. We appreciate Hollywood for his massive phenotype and you couldn't put a better foot on a Red Angus bull.



Donor Care Facility

Embryo Collection, Freezing & Transplants

IVF - In Vitro Fertilization

Export Certified

In-Clinic & On Farm Services

Recipient Programs

Bova-Tech Ltd.

P.O. Box 80142 Airdrie, Alberta T4B 2V8 Canada

Tel: (403) 332-1567 E-mail: info@bova-tech.com



Bova-Tech Ltd.

B T L

Embryos for Sale

www.bova-tech.com

(403) 332-1567



Red

LONE STONE

Beula

35H



Red Lone Stone Beula 35H is a very well made female that is well-balanced. Buela is the complete package, an impressive cow with a small frame build (5.0 to 5.5 frame score). She has a very nice temperament, beautiful coat, solid feet, and perfect udder. The potential for 35H to become a very productive cow and raise outstanding offspring is already proven with her well-formed bull calf that hit the ground this year.

Red U2 284F

DOMINION

Red U2 Dominion 284F is an outcross sire who continues to make a name for himself as a sire who stamps his progeny with phenotype, foot quality, and stoutness. His pedigree has generations of maternal legends and a matron derived from a notable cow family known for fertility, calf performance, and udder quality.



Donor Care Facility

Embryo Collection, Freezing & Transplants

IVF - In Vitro Fertilization

Export Certified

In-Clinic & On Farm Services

Recipient Programs

Bova-Tech Ltd.

P.O. Box 80142 Airdrie, Alberta T4B 2V8 Canada

Tel: (403) 332-1567 E-mail: info@bova-tech.com



Bova-Tech Ltd.

B T L

Embryos for Sale

www.bova-tech.com

(403) 332-1567



Red **MINBURN**
300Y
M A Y

Red **Cockburn** 3059
PREMIUM



Red Minburn May 300Y is a full sister to the breed legend, Red Minburn Copenhagen! Copenhagen and another full sister took Agribition by storm in 2011 at a figure of \$67,000 for Copenhagen to U2 Ranch and Heart of the Valley. Copenhagen daughters were a highlight at the U2 dispersal bringing some long dollars while Copenhagen semen, while limited in it's availability has commanded over \$300 a straw. 300Y is an absolute mirrored image of what a Copenhagen daughter looks like. Sound, good footed, productive cows.

Red Cockburn Premium 3059. Premium's performance, presence, foot quality and overall mass make him unique. Combine that with the long line of consistent, fertile donor dams on both sides of his pedigree it truly sets him apart. The udder and foot quality runs deep in the Hawk cow family and the first Momentum daughters only add to the excitement. He was the lead bull in the Grand Champion pen at Agribition, Denver and the Medicine Hat pen show. Premium froze quality semen and measured 38cm scrotal at 12 months of age. Bolt epds Ce 11 bw -0.1 ww 75 yw 116 m 28.

Donor Care Facility

Embryo Collection, Freezing & Transplants

IVF - In Vitro Fertilization

Export Certified

In-Clinic & On Farm Services

Recipient Programs

Bova-Tech Ltd.

P.O. Box 80142 Airdrie, Alberta T4B 2V8 Canada

Tel: (403) 332-1567 E-mail: info@bova-tech.com



Bova-Tech Ltd.

B T L

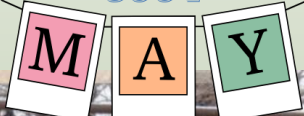
Embryos for Sale

www.bova-tech.com

(403) 332-1567



Red MINBURN 300Y



Red Minburn May 300Y is a full sister to the breed legend, Red Minburn Copenhagen! Copenhagen and another full sister took Agribition by storm in 2011 at a figure of \$67,000 for Copenhagen to U2 Ranch and Heart of the Valley. Copenhagen daughters were a highlight at the U2 dispersal bringing some long dollars while Copenhagen semen, while limited in it's availability, has commanded over \$300 a straw. 300Y is an absolute mirrored image of what a Copenhagen daughter looks like. Sound, good footed, productive cows.

The \$90,000 lead-off and high selling bull from the South View Ranch's 25th Annual Bull Sale. Pistol Pete 4M is full of red meat and muscle while still maintaining great eye appeal in a sound structured package. This guy is powerful and stout from any angle you view him, stands on a big square foot and is that ideal dark red color. His actual data is impressive with a great spread from birth to yearling and big scrotal. He was exhibited alongside his incredible 9-year-old dam where they were selected Reserve Champion Female at Agribition and Champion Senior Female at FarmFair.



Donor Care Facility

Embryo Collection, Freezing & Transplants

IVF - In Vitro Fertilization

Export Certified

In-Clinic & On Farm Services

Recipient Programs



Bova-Tech Ltd.

P.O. Box 80142 Airdrie, Alberta T4B 2V8 Canada

Tel: (403) 332-1567 E-mail: info@bova-tech.com



Bova-Tech Ltd.

B T L



Embryos for Sale

www.bova-tech.com

(403) 332-1567

Red SSF
271A
SCOTTS KARI

DUFF 1941
Red Wood



Kari 271A is a moderate framed cow carrying a lot of performance, she ranks top 2% of the breed for weaning weight, top 3% for yearling weight and top 4% for Maternal. She has an excellent feet and udder, very sound and well-made cow with an EPD on the top 1% for stay-ability.

Kari 271A has the phenotypic quality and genetic profile to enhance any program.

This Red Angus bull may be just as noble as the ancient redwood trees "Duff Redwood 1941". What a specimen he is in terms of depth of rib, fleshing ability and overall dimension in a moderate frame. Just like the coastal trees, you truly need to see Redwood for yourself to understand his overall quality and value.

Duff Redwood 1941 will undoubtedly leave deep roots in the beef industry.

Donor Care Facility

Embryo Collection, Freezing & Transplants

IVF - In Vitro Fertilization

Export Certified

In-Clinic & On Farm Services

Recipient Programs

Bova-Tech Ltd.

P.O. Box 80142 Airdrie, Alberta
T4B 2V8 Canada

Tel: (403) 332-1567 E-mail: info@bova-tech.com



Bova-Tech Ltd.

B T L



Embryos for Sale

www.bova-tech.com

(403) 332-1567

Red SSF
271A
SCOTT'S KARI

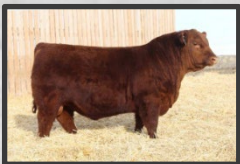
Red MRLA
Resource
137E



Kari 271A is a moderate frame cow carrying a lot of performance, she ranks top 2% of the breed for weaning weight, top 3 % for yearling weight and top 4% for Maternal.

She has an excellent feet and udder, very sound and well-made cow with an EPD on the top 1% for stayability.

Kari 271A has the phenotypic quality and genetic profile to enhance any program.



Son of MRLA
Resource sold for
\$130,000
March 2020

Resource's influence has been widely accepted across North America. His daughters at the U2 Dispersal topped at \$23,000 with 30 Open Resource daughters averaging \$9,000 at the U2 Dispersal.

A performance sire in a breed that has done a great job on calving ease and maternal instinct.

- Top 55% of the breed for weaning weight
- Top 15% of the breed for yearling weight
- Top 15% of the breed for scrotal circumference
- Top 8% of the breed for carcass weight
- Top 35% of the breed for ribeye
- Top 3% of the breed for mature weight

**Donor Care
Facility**

**Embryo Collection,
Freezing & Transplants**

**IVF - In Vitro
Fertilization**

**Export
Certified**

**In-Clinic & On
Farm Services**

**Recipient
Programs**

Bova-Tech Ltd.

P.O. Box 80142 Airdrie, Alberta T4B 2V8 Canada
Tel: (403) 332-1567 E-mail: info@bova-tech.com



Bova-Tech Ltd.

B T L



Embryos for Sale

www.bova-tech.com

(403) 332-1567

**Red SSF
271A
SCOTTS KARI**

**RED U-2
Authentic
139A**



Kari 271A is a moderate framed cow carrying a lot of performance, she ranks top 2% of the breed for weaning weight, top 3% for yearling weight and top 4% for Maternal.

She has excellent feet and udder, and is very sound and a well-made cow with an EPD on the top 1% for stay-ability. Kari 271A has the phenotypic quality and genetic profile to enhance any program.



Maternal greatness and sheer power are combined in this leading sire, Red U-2 Authentic 139A.

Authentic was a past high-selling bull at U2 and has gone on to be a potent breeder that has had positive production results for the three progressive breeders that own him. Phenotypically he is the ideal Red Angus sire, super clean fronted with an attractive head that will add length, power and over all completeness to his progeny. He is out of one of the great donors at U2, Stormy 7202T, and complimented by a stacked maternal pedigree!

**Donor Care
Facility**

**Embryo Collection,
Freezing & Transplants**

**IVF - In Vitro
Fertilization**

**Export
Certified**

**In-Clinic & On
Farm Services**

**Recipient
Programs**

Bova-Tech Ltd.

P.O. Box 80142 Airdrie, Alberta T4B 2V8 Canada

Tel: (403) 332-1567 E-mail: info@bova-tech.com



Bova-Tech Ltd.

B T L



Embryos for Sale

www.bova-tech.com

(403) 332-1567

Red SSF
271A
SCOTTS KARI

Red U2 284F
DOMINION

IVF



Kari 271A is a moderate framed cow carrying a lot of performance, she ranks top 2% of the breed for weaning weight, top 3% for yearling weight and top 4% for Maternal.

She has an excellent feet and udder, very sound and well-made cow with an EPD on the top 1% for stay-ability.

Kari 271A has the phenotypic quality and genetic profile to enhance any program.

**FEMALE
SEXED**

Red U2 Dominion 284F is an outcross sire who continues to make a name for himself as a sire who stamps his progeny with phenotype, foot quality, and stoutness.

His pedigree has generations of maternal legends and a matron derived from a notable cow family known for fertility, calf performance, and udder quality.

Donor Care Facility

Embryo Collection, Freezing & Transplants

IVF - In Vitro Fertilization

Export Certified

In-Clinic & On Farm Services

Recipient Programs

Bova-Tech Ltd.

P.O. Box 80142 Airdrie, Alberta
T4B 2V8 Canada

Tel: (403) 332-1567 E-mail: info@bova-tech.com



Bova-Tech Ltd.

B T L

Embryos for Sale

www.bova-tech.com

(403) 332-1567



Red U2

282B



REG#: 1795500

DOB: 30/01/2014

TATTOO: DUA 282B

Sire: RED U-2 RECON 192Y

Dam: RED U-2 ANEXA 271Y



Legendary herdbull who is still out breeding cows today. Sons still continue to top sales and daughters are some of the herd favourites. The \$58,000 sale feature from 2015 who adds extra bone, frame, and longevity.

REG#: 1739455

DOB: FEB. 16, 2013

TATTOO: DUA 439A

Sire: RED MINBURN COPENHAGEN 3Y

Dam: RED U-2 ANEXA 443Y

With a whopping 68 registered progeny in Canada alone, Red U2 Anexa 439A knows she is special. Responsible for so many top high sellers such as Blue Collar, Attractive, Don Julio, Fringe, Convo, Cabo, Patron, and Rocky, to name a few. She possesses a world-class feminine skull, hind leg, fertility, and foot design. Many daughters are breeding at top with multiple donor daughters.



Donor Care Facility

Embryo Collection, Freezing & Transplants

IVF - In Vitro Fertilization

Export Certified

In-Clinic & On Farm Services

Semen Production

Bova-Tech Ltd.

P.O. Box 80142 Airdrie, Alberta T4B 2V8 Canada

Tel: (403) 332-1567 E-mail: info@bova-tech.com

