

Bova-Tech Ltd.

B T L



**Red
Angus**

**Black
Angus**

Hereford

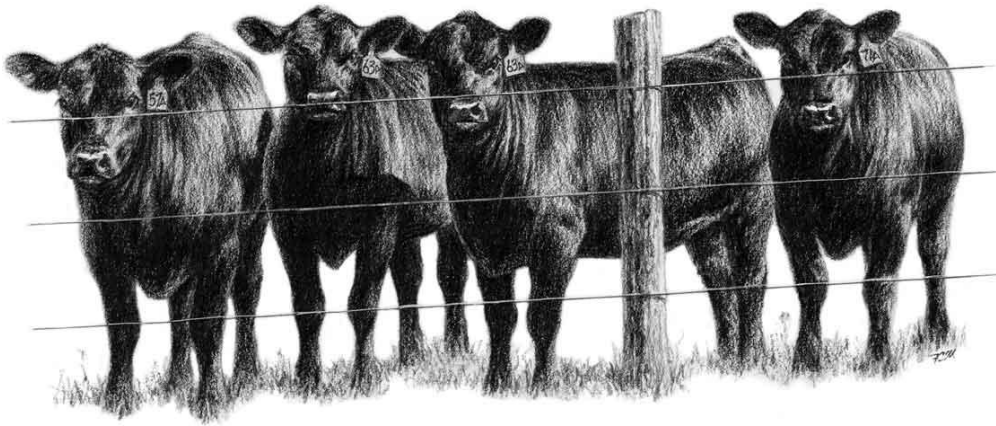
Wagyu

**Speckle
Park**

**Embryo
Transplant
Services**

**Export
Certified**

2026 CATALOGUE



Embryos for Sale

www.bova-tech.com

P.O. Box 80142 Airdrie, Alberta

T4B 2V8 Canada

Tel: (403) 332-1567

E-mail: info@bova-tech.com

www.bova-tech.com



Bova-Tech Ltd.

B T L



Embryos for Sale

www.bova-tech.com

(403) 332-1567

BBF

Pleasant Pill

516N



Presenting the dam of Triara "Above Par 666T". Pleasant Pill 516 found her way to be one of the top cows that have built the Triara breeding program.

Not surprising she comes from a famous cow family that produced the breed legend B/R New Frontier 095.

She is a very impressive cow with a nice udder and great overall conformation. A top quality genetics that will leave its mark in any herd.

HF

Tiger

5T



HF Tiger 5T - Tiger is probably the winningest Bull in Canadian Angus history. Along with all his accomplishments he was overall Champion at the World Angus Forum.

A true testament of Tiger's prolific ability to breed is reflected in the fact that progeny in numerous herds have gone on to top shows and sales throughout the country. He had a son sell for \$92,000.

This bull represents all the qualities people look for in Angus cattle. He has been admired by many astute cattlemen for his correct structure, appealing muscle shape, and proud character.

Donor Care
Facility

Embryo Collection,
Freezing & Transplants

IVF - In Vitro
Fertilization

Export
Certified

In-Clinic & On
Farm Services

Recipient
Programs



Bova-Tech Ltd.

P.O. Box 80142 Airdrie, Alberta T4B 2V8 Canada

Tel: (403) 332-1567 E-mail: info@bova-tech.com



Bova-Tech Ltd.

Embryos for Sale

B T L

www.bova-tech.com

(403) 332-1567



Coleman 2302
DONNA



Donna 2302 blends the calving-easy and the \$w sire, with a big epd for milk. Donna is high quality phenotype female with a long and deep body with a perfect udder. The donna cow family is synonymous of raising top producing individuals at coleman angus meeting all expectations with a maternal masterpiece combination, and donna 2301 is living up to her heritage.

Donna 2302 carries a br 2@92, a wr 2@104 and a yr 1@100. Her dam records a br 3@98, a wr 3@109 and a yr 3@106 while two daughters maintain a combined wr 3@105. Donna is consistent on her production bringing to any program easy fleshing, milk and excellent udder and overall correct conformation. Her 2016 natural calf is an outstanding heifer sired by resource weighed 731 lbs. At 7.5 mo. Of age.

LT Marquee 169L is one of the most widely admired Angus bulls in the industry, valued at \$1.4 million! He is supported by much more than a pedigree of significance, as his quality is defined by the history and tradition that makes up his prominent lineage.

Marquee will sire Angus cattle that excel fundamentally, offering the intangible assets that combined will put any breeding program in the "bright lights" offering a combination of phenotype and genotype.

169L is a sought after "outcross" sire that will complement the elite standard of phenotype that producers have become accustomed to in today's day and age.

Donor Care Facility

Embryo Collection, Freezing & Transplants

IVF - In Vitro Fertilization

Export Certified

In-Clinic & On Farm Services

Recipient Programs

Bova-Tech Ltd.

P.O. Box 80142 Airdrie, Alberta T4B 2V8 Canada

Tel: (403) 332-1567 E-mail: info@bova-tech.com



Bova-Tech Ltd.

B T L



Embryos for Sale

www.bova-tech.com

(403) 332-1567

Donor Care Facility

Embryo Collection, Freezing & Transplants

IVF - In Vitro Fertilization

Export Certified

In-Clinic & On Farm Services

Recipient Programs

Coleman 2302

DONNA

USA, MX & AUS
Qualified

Red Minburn

Copenhagen

3Y



Donna 2302 blends the calving-easy and the \$w sire, with a big EPD for milk. Donna is high quality phenotype female with a long and deep body with a perfect udder. The donna cow family is synonymous of raising top producing individuals at Coleman angus meeting all expectations with a maternal masterpiece combination, and donna 2301 is living up to her heritage.

Donna 2302 carries a br 2@92, a wr 2@104 and a yr 1@100. Her dam records a br 3@98, a wr 3@109 and a yr 3@106 while two daughters maintain a combined wr 3@105. Donna is consistent on her production bringing to any program easy fleshing, milk and excellent udder and overall correct conformation. Her 2016 natural calf is an outstanding heifer sired by resource weighed 731 lbs. At 7.5 mo. of age.

The Masterpiece record-setting outcross bull that keeps siring bull and heifer calves that rise to the top. Copenhagen 3Y has 14 sons working in the purebred herds and many more in some of the top commercial programs in the country. His daughters have turned into model Angus cows, built to stand the test of time.

Daughters of Copenhagen 3Y



Bova-Tech Ltd.

P.O. Box 80142 Airdrie, Alberta
T4B 2V8 Canada

Tel: (403) 332-1567 E-mail: info@bova-tech.com



Bova-Tech Ltd. Female Sexed IVF

B T L

Embryos for Sale

www.bova-tech.com

(403) 332-1567



Coleman 2302
DONNA



SAV 1441
Resource



Donna 2302 blends the calving-easy and the \$w sire, with a big epd for milk. Donna is high quality phenotype female with a long and deep body with a perfect udder. The donna cow family is synonymous of raising top producing individuals at coleman angus meeting all expectations with a maternal masterpiece combination, and donna 2301 is living up to her heritage.

Donna 2302 carries a br 2@92, a wr 2@104 and a yr 1@100. Her dam records a br 3@98, a wr 3@109 and a yr 3@106 while two daughters maintain a combined wr 3@105. Donna is consistent on her production bringing to any program easy fleshing, milk and excellent udder and overall correct conformation. Her 2016 natural calf is an outstanding heifer sired by resource weighed 731 lbs. At 7.5 mo. Of age.



Top 1% of the breed for: Weaning Weight, Yearling Weight, Total Maternal, REA and Carcass Weight Top 2% for Scrotal circumference Resource is one of the most iconic bulls in the breed; Resource is the most popular sire in the Genex lineup due to his ability to sire growth, carcass merit and maternal ability in a desirable package.

Resource brings to the table the basics of efficiency and natural fleshing ability, with thickness, muscle, masculinity, superb structure, feet quality and authentic breed character. Resource sons have unprecedented performance and industry appeal, while his daughters are making superb brood cows with high quality udders and abundant milk.

Donor Care Facility

Embryo Collection, Freezing & Transplants

IVF - In Vitro Fertilization

Export Certified

In-Clinic & On Farm Services

Recipient Programs

Bova-Tech Ltd.

P.O. Box 80142 Airdrie, Alberta T4B 2V8 Canada

Tel: (403) 332-1567 E-mail: info@bova-tech.com



Bova-Tech Ltd.

B T L



www.bova-tech.com

Embryo
Transplants

Improving Herd Genetics

Embryos For Sale

www.bova-tech.com

PH: (403) 332-1567

Coleman Donna 6243D is a direct daughter of one of the most productive donor cows at Bova-Tech (BTL). Her dam Coleman Donna 2302Z has sold embryos across Canada and other countries producing outstanding offspring with the different sires used.

6243D is a carbon copy of her dam and direct daughter of SAV Resource 1441. She carries an amazing deep body with a great rib and overall thicknesses. A cow of a gentle disposition, amazing feet and udder structure with balanced EPDs. 6243D is an easy fleshing cow that maintains high body condition scores through out the year, even milking and raising a calf in pasture conditions.



Coleman
DONNA
6243D



Merit  1054J

INVESTMENT

Merit Investment 1054J was the high selling bull at the Merit Bull Sale for \$85,000 in a hotly contested battle. His dam has done so much for the industry already with many top sellers for many folks.



P.O. Box 80142 Airdrie,
Alberta T4B 2V8 Canada

Donor Care
Facility

Embryo Collection,
Freezing & Transplants

IVF - In Vitro
Fertilization

Export
Certified

In-Clinic & On
Farm Services

Recipient
Programs

Bova-Tech Ltd.

B T L



Embryo

Transplants

www.bova-tech.com

Improving Herd Genetics

IVF Embryos

www.bova-tech.com

PH: (403) 332-1567

Coleman Donna 6243D is a direct daughter of one of the most productive donor cows at Bova-Tech (BTL). Her dam Coleman Donna 2302Z has sold embryos across Canada and other countries producing outstanding offspring with the different sires used. 6243D is a carbon copy of her dam and direct daughter of SAV Resource 1441. She carries an amazing deep body with a great rib and overall thicknesses. A cow of a gentle disposition, amazing feet and udder structure with balanced EPDs. 6243D is an easy fleshing cow that maintains high body condition scores through out the year, even milking and raising a calf in pasture conditions.

Coleman
DONNA
6243D



Poss **Maverick**



Poss Maverick is one of the most popular Angus sires all across the globe. The Maverick progeny have surpassed expectations in terms of elite phenotype and carrying on his incredible EPD profile. Bold outlined and imposing 3 dimensional body composition rarely found in such a high marbling sire. The ability of backing up the genomic power with scale crushing data is what makes Maverick so unique. Maverick's elite combination of \$B, Marb, and phenotype make him a must use sire. He is the #1 \$B son of Basin Payweight 1682 and his first progeny are excelling in genomic scores and topping sales.



**P.O. Box 80142 Airdrie,
Alberta T4B 2V8 Canada**

**Donor Care
Facility**

**Embryo Collection,
Freezing & Transplants**

**IVF - In Vitro
Fertilization**

**Export
Certified**

**In-Clinic & On
Farm Services**

**Recipient
Programs**

Bova-Tech Ltd.

B T L



Embryo

Transplants

www.bova-tech.com

Improving Herd Genetics

Embryos For Sale

www.bova-tech.com

PH: (403) 332-1567

Coleman Donna 6243D is a direct daughter of one of the most productive donor cows at Bova-Tech (BTL). Her dam Coleman Donna 2302Z has sold embryos across Canada and other countries, producing outstanding offspring with the different sires used. 6243D is a carbon copy of her dam and direct daughter of SAV Resource 1441. She carries an amazing deep body with a great rib and overall thicknesses. A cow of a gentle disposition, amazing feet and udder structure with balanced EPDs. 6243D is an easy fleshing cow that maintains high body condition scores through out the year, even milking and raising a calf in pasture conditions.

Coleman
DONNA
6243D



Sitz
726D
STELLAR

Sitz Stellar 726D, is one of the most prolific sires in the history of Sitz Angus.

He was the 2017 Sitz Angus Sale Topper. With big time calving ease and performance, combining a 62 pound birth weight with a 900+ pound weaning weight.

Stellar has an outstanding maternal pedigree and design with a breed leading \$Weaning Index. He is a super thick topped and deep sided bull that only improved his power house phenotype while breeding cows as a yearling.



**P.O. Box 80142 Airdrie,
Alberta T4B 2V8 Canada**

**Donor Care
Facility**

**Embryo Collection,
Freezing & Transplant:**

**IVF - In Vitro
Fertilization**

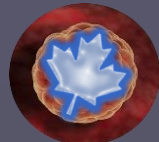
**Export
Certified**

**In-Clinic & On
Farm Services**

**Recipient
Programs**

Bova-Tech Ltd.

B T L



Embryo
Transplants

Embryos for Sale

www.bova-tech.com

(403) 332-1567

Donor Care
Facility

Embryo Collection,
Freezing & Transplants

IVF - In Vitro
Fertilization

Export
Certified

In-Clinic & On
Farm Services

Recipient
Programs

EDWARDS LADY RITO 39B (EDAN 39B)

BROOKING TRENDSPOTTER 6166



Edwards Lady Rito 39B (Edan 39B) is an easy fleshing, square hipped, deep bodied daughter of the popular Soo Line Motive. The grand dam Justamere Lady Rito 839W was the high selling heifer calf at the historic Justamere dispersal.

Ai'd safe to the exciting 74-51 Sudden Look.

Edan 39B is a high quality phenotype female with a long and deep body with a perfect udder.

An impeccable pedigree, flawless phenotype and ideal EPD spread surrounds the great TRENDSPOTTER. He has a stacked pedigree with some of the very best Angus females of all time right up close including the great EA Rose 918 and the World Forum Champions, Soo Line Annie K 9165 and Soo Line Annie K 6271. With just an 84 pound BW, he posts an impressive 919 WW and 1470 YW while sporting an impressive spread of EPDs that lands him in the top 2% for WW & YW, top 4% for TM. It is hard, almost impossible to combine the number and impeccable pedigree that TRENDSPOTTER carries while his phenotype is possibly his biggest asset. Look for him to add muscle shape, stoutness, hair, depth of body, foot quality and overall soundness in an attractive package. We feel TRENDSPOTTER has an unlimited arsenal to offer the Angus industry and one of the most exciting bulls to hit the open semen market in some time.



Bova-Tech Ltd.

P.O. Box 80142 Airdrie, Alberta

T4B 2V8 Canada

Tel: (403) 332-1567

E-mail: info@bova-tech.com



FOLLOW US ON

Instagram



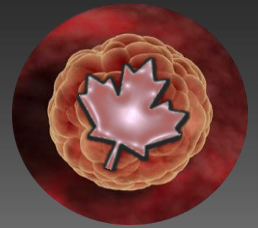
Bova-Tech Ltd.

B T L

Embryo Transplants

Embryos for Sale

www.bova-tech.com or (403) 332-1567



**P.O. Box 80142 Airdrie, Alberta
T4B 2V8 Canada**



JACS BLACKCAP 0247



Here is a stunning female that is straight on her lines, level hiped with an attractive look. Blackcap 0247X has raised off spring that share her erect front end and superior phenotype. This is one of our absolute favorites cows that came from Gilchrist farms in Ontario.

0247X pedigree is backed up by sires like SAV Final Answer, and N Bar Emulation EXT, she is a direct SAV Pioneer daughter. Her embryo basket feature embryos sired by some of the most popular and heavily use bulls in North America, with balanced EPDs and mind blowing phenotypes.



BROOKING FIREBRAND 6068



Firebrand was the top selling bull at the 2017 Brooking Angus Sale, SK where they proclaimed he's a milestone breeding achievement, blending abundance of thickness, testicle development, muscle and dimension with a unique, clean, erect front third, based on a great set of feet and legs. Fantastic females are included on both sides of the pedigree to bolster Firebrand's appeal as a tremendous breeding piece!

Firebrand is supported by cow family strength on both sides of his pedigree. His sire's dam EA Rose 918 is what an Angus cow should look like. Firebrand's dam, Brooking Annie K 390, is a moderate framed female that is very angular fronted and has a beautiful udder. Firebrand is a sire to tie on to.

**Donor Care
Facility**

**Embryo Collection,
Freezing & Transplants**

**IVF - In Vitro
Fertilization**

**Export
Certified**

**In-Clinic & On
Farm Services**

**Recipient
Programs**

Bova-Tech Ltd.

B T L

P.O. Box 80142 Airdrie, Alberta
T4B 2V8 Canada

www.bova-tech.com or (403) 332-1567



Embryos for Sale

Jac's 0247X
Blackcap



Here is a stunning female that is straight on her lines, level hipped with an attractive look. Blackcap 0247X has raised off spring that share her erect front end and superior phenotype. This is one of our absolute favorites cows that came from Gilchrist farms in Ontario.

0247X pedigree is backed up by sires like SAV Final Answer, and N Bar Emulation EXT, she is a direct SAV Pioneer daughter. Her embryo basket feature embryos sired by some of the most popular and heavily use bulls in North America, with balanced EPDs and mind blowing phenotypes.

Colburn 5153
PRIMO



Colburn Primo 5153: Primo is the awesome new sire raised by Colburn Cattle Co, CA. He's a product of one of Style's most decorated daughters and the amazing Dameron First Class!

His maternal granddam is Silveiras famous donor, Saras Dream! Primo's full sister's are some of the most dominating show heifers on the circuit! Trust these genetics to take you to the next level at the show ring with balanced EPDs.



Donor Care Facility

Embryo Collection, Freezing & Transplants

IVF - In Vitro Fertilization

Export Certified

In-Clinic & On Farm Services

Recipient Programs

Bova-Tech Ltd.

B T L



P.O. Box 80142 Airdrie, Alberta
T4B 2V8 Canada

Embryos for Sale

www.bova-tech.com or (403) 332-1567

Jac's 0247X
Blackcap



Here is a stunning female that is straight on her lines, level hipped with an attractive look. Blackcap 0247X has raised off spring that share her erect front end and superior phenotype. This is one of our absolute favorites cows that came from Gilchrist farms in Ontario.

0247X pedigree is backed up by sires like SAV Final Answer, and N Bar Emulation EXT, she is a direct SAV Pioneer daughter. Her embryo basket feature embryos sired by some of the most popular and heavily use bulls in North America, with balanced EPDs and mind blowing phenotypes.



Musgrave 811
CRACKERJACK



The excitement continues to build around Crackerjack as his first calves hit the ground small, but with superior vigor and growth. They're jet black, stylish and massive just like their sire. Musgrave's identified Crackerjack early as the next step forward in their breeding program for his powerful yet proud look, structure and balanced genetic predictions. His productive dam has power, substance and complimentary femininity, with incredible udder quality and excellent feet. Crackerjack is pleasing many for his exceptional feet, large scrotal development and extra muscle expression. We believe Crackerjack has as much scope and future as any young sire in the A.I. industry.

Donor Care
Facility

Embryo Collection,
Freezing & Transplants

IVF - In Vitro
Fertilization

Export
Certified

In-Clinic & On
Farm Services

Recipient
Programs

Bova-Tech Ltd.

B T L



Embryos for Sale

www.bova-tech.com

(403) 332-1567

Donor Care Facility

Embryo Collection, Freezing & Transplants

IVF - In Vitro Fertilization

Export Certified

In-Clinic & On Farm Services

Recipient Programs

Maya 247D
BLACKCAP

Basin 1682
PAYWEIGHT



Maya Blackcap 247D is a deep bodied, wide ribbed female, with a nice solid frame. Beautifully balanced with loads of thickness and muscle shape.

Blackcap 247D stands on an ideal set of feet and legs and has the depth and capacity to produce.

She is consistent on her production bringing to any program easy fleshing, milk and excellent udder and overall correct conformation.

Blackcap 247D puts everything together in such a complete package.

Ranked Number 4 among all Angus sires for progeny registered in the 2018 fiscal year of the American Angus Association after ranking Number 6 in 2017, even though demand has been much larger than the amount of semen available for several years, this high volume, easy fleshing individual is one of the bulls that cattlemen admire at ORigen and one of the highest demand sires in the decade. With more than 30 different sons that topped bull sales across the nation in the spring of 2018, few calving-ease bulls in Angus history have ever offered the extreme body mass and depth of body that is a trademark of Payweight 1682 and his progeny, in combination with elite growth values and a look that appeals to both purebred and commercial cattlemen.

Payweight 1682 daughters in production display his depth of body and ease of fleshing with nice udder structure and a brood cow look and his daughters have topped Angus sales across the continent with his full sister Basin O Lass 1663 setting a Montana Angus record when half interest of her sold for \$210,000 at the NILE Sale in Billings after her first natural son topped the 2014 Midland Test Sale at \$105,000.

EPDs Fall 2018:

Top 1% for \$Weaned calf value index Better than breed average for Scrotal Circumference EPD, Docility score EPD, Calving Ease Maternal EPD, maternal Milk EPD, reducing Mature Weight EPD, Calving Ease Direct EPD and Birth Weight EPD Phenotype data includes weaning records from 831 daughters in 220 herds, 44 progeny harvested in 23 groups and 4,380 progeny scanned in 1,507 groups



Bova-Tech Ltd.

P.O. Box 80142 Airdrie, Alberta
T4B 2V8 Canada

Tel: (403) 332-1567 E-mail: info@bova-tech.com



Bova-Tech Ltd.

B T L



Embryos for Sale

www.bova-tech.com

(403) 332-1567

Donor Care
Facility

Embryo Collection,
Freezing & Transplants

IVF - In Vitro
Fertilization

Export
Certified

In-Clinic & On
Farm Services

Recipient
Programs

Maya 247D
BLACKCAP

Brooking 6068
FIREBRAND



Maya Blackcap 247D is a deep bodied, wide ribbed female, with a nice solid frame. Beautifully balanced with loads of thickness and muscle shape.

Blackcap 247D stands on an ideal set of feet and legs and has the depth and capacity to produce.

She is consistent on her production bringing to any program easy fleshing, milk and excellent udder and overall correct conformation.

Blackcap 247D puts everything together in such a complete package.

Firebrand was the top selling bull at the 2017 Brooking Angus Sale, SK where they proclaimed he's a milestone breeding achievement, blending abundance of thickness, testicle development, muscle and dimension with a unique, clean, erect front third, based on a great set of feet and legs. Fantastic females are included on both sides of the pedigree to bolster Firebrand's appeal as a tremendous breeding piece!

Firebrand is supported by cow family strength on both sides of his pedigree. His sire's dam EA Rose 918 is what an Angus cow should look like.

Firebrand's dam, Brooking Annie K 390, is a moderate framed female that is very angular fronted and has a beautiful udder. Firebrand is a sire to tie on to.



Bova-Tech Ltd.

P.O. Box 80142 Airdrie, Alberta
T4B 2V8 Canada

Tel: (403) 332-1567 E-mail: info@bova-tech.com



Bova-Tech Ltd.

B T L



Embryos for Sale

www.bova-tech.com

(403) 332-1567

Donor Care
Facility

Embryo Collection,
Freezing & Transplants

IVF - In Vitro
Fertilization

Export
Certified

In-Clinic & On
Farm Services

Recipient
Programs

Maya 247D
BLACKCAP

HILL VALLEY
RECKONING
931



Maya Blackcap 247D is a deep bodied, wide ribbed female, with a nice solid frame. Beautifully balanced with loads of thickness and muscle shape. She stands on an ideal set of feet and legs and has the depth and capacity to produce.

Consistent on her production, bringing to any program easy fleshing, milk and excellent udder and overall correct conformation.

Blackcap 247D puts everything together in such a complete package.

Reckoning was the reigning Intermediate Angus Champion at both the 2021 OKC Cattlemen's Congress & 2020 NAILE! His dam was an extremely successful multiple time champion at all levels and is now producing breed changers. Reckoning is extremely up-headed & clean fronted with cool neck extension! He possesses ultra flexible joints with desirable body depth, dimension and muscle shape. Hair quality is a BONUS too. His sire, Believe, is one of Canada's highly valuable sires of recent times.

Reckoning is not only a bull to improve show quality, but is a great choice to improve herds of all types with his tremendous breed character, testicle shape, joint & foot quality, and overall excellent phenotype!



Bova-Tech Ltd.

P.O. Box 80142 Airdrie, Alberta

T4B 2V8 Canada

Tel: (403) 332-1567

E-mail: info@bova-tech.com



Bova-Tech Ltd.

B T L



EMBRYOS FOR SALE

WWW.BOVA-TECH.COM

(403) 332-1567

Maya 247D
BLACKCAP

Marda 683
BLACKSMITH



Maya Blackcap 247D is a deep bodied, wide ribbed female, with a nice solid frame.

Beautifully balanced with loads of thickness and muscle shape.

Blackcap 247D stands on an ideal set of feet and legs and has the depth and capacity to produce.

She is consistent on her production bringing to any program easy fleshing, milk and excellent udder and overall correct conformation.

Blackcap 247D puts everything together in such a complete package.

Deep in his rib cage and thick across his rump, this eye appealing son of a past Connealy, top-selling yearling had a birth weight of 70 pounds and an adjusted 205 day weight of 986 pounds for a weaning ratio of 125 as highest weaning weight bull in his ET contemporary group and he scanned an adjusted URE measure of 17.1 square inches.

With an exceptional genomic profile that adds accuracy and predictability to his exceptional genomic-enhanced EPD profile, his dam who has an average progeny %IMF ratio of 9 at 102 and an average progeny URE ratio of 9 at 105, was produced by a full sister to the \$110,000 S A V Resource 1441 and his third dam is the all-time highest income producing donor in the S A V program and among the top of the entire Angus breed.

Donor Care Facility

Embryo Collection, Freezing & Transplants

IVF - In Vitro Fertilization

Export Certified

In-Clinic & On Farm Services

Recipient Programs



Bova-Tech Ltd.

P.O. Box 80142 Airdrie, Alberta T4B 2V8 Canada

Tel: (403) 332-1567 E-mail: info@bova-tech.com



Bova-Tech Ltd.

B T L



EMBRYOS FOR SALE

WWW.BOVA-TECH.COM

(403) 332-1567

Maya 247D
BLACKCAP



Maya Blackcap 247D is a deep bodied, wide ribbed female, with a nice solid frame. Beautifully balanced with loads of thickness and muscle shape.

Blackcap 247D stands on an ideal set of feet and legs and has the depth and capacity to produce.

She is consistent on her production bringing to any program easy fleshing, milk and excellent udder and overall correct conformation. Blackcap 247D puts everything together in such a complete package.

SAV 6847
President



SAV President 6847 was the world record and top-selling bull of the 2017 SAV sale at \$750,000 with a total valuation of \$938,500.

Incredible in his structure and powerful in his design, we believe President is the best Charlo son out of the No. 1 income producing cow in SAV history, SAV Blackcap May 4136.

To date, she has produced over \$10 million dollars in progeny sales. Thick and efficient, he is the future of performance Angus genetics.

Donor Care
Facility

Embryo Collection,
Freezing & Transplants

IVF - In Vitro
Fertilization

Export
Certified

In-Clinic & On
Farm Services

Recipient
Programs



Bova-Tech Ltd.

P.O. Box 80142 Airdrie, Alberta T4B 2V8 Canada

Tel: (403) 332-1567 E-mail: info@bova-tech.com



Bova-Tech Ltd.

B T L

Embryos for Sale

www.bova-tech.com

(403) 332-1567



Maya

5G



BLACKCAP

Poss



9731

DEADWOOD



Maya Blackcap 5G is a carbon copy of her dam Maya Blackcap 247D and grand-dam Jac's Blackcap 0247.

5G is a deep bodied, wide ribbed female, with a solid frame and a big presence. Beautifully balanced with loads of thickness and muscle shape. She stands on an ideal set of feet and legs, with an erect front end, superior phenotype and has the depth and capacity to produce.

Poss Deadwood has captured the attention of the breed since he was at the side of his dam. Few bulls have generated the across country allure like he has. A-typical with length of body and extension for a Maverick son, Deadwood looks to bring muscle and top shelf end product merit with calving ease.

His pedigree can be used on nearly any genetic base. Of his contemporaries, in this league of elite EPD's, we feel he has the best opportunity, via pedigree and his own performance to sire cattle that can meet his EPD profile.

DAM – Maya Blackcap 247D

SIRE – Vin-Mar O'Reilly Factor



Donor Care Facility

Embryo Collection, Freezing & Transplants

IVF - In Vitro Fertilization

Export Certified

In-Clinic & On Farm Services

Recipient Programs

Bova-Tech Ltd.

P.O. Box 80142 Airdrie, Alberta T4B 2V8 Canada

Tel: (403) 332-1567 E-mail: info@bova-tech.com



Bova-Tech Ltd.

B T L



EMBRYOS FOR SALE

WWW.BOVA-TECH.COM

(403) 332-1567



A big-ribbed and stoutly-constructed 3rd generation donor in the program. Descending from a dam with progeny ratios of BR 6@92; WR 6@106 and YR 5@103 and a grandam showing a progeny record of BR 5@99; WR 5@102; YR 5@102; IMF 72@102; RE 72@100, Rita 7204 posts a progeny record of BR 3@100; WR 3@100; YR 3@100 and IMF 5@113 with a calving interval of 4@361. Montana Just In Time 1080, her son, is a herd sire prospect, while another son, Guideline 9304, was the lead-off War Party 1472 son selected by Gilliland Livestock of CA in the 2020 sale.

Registration Number: 20800144
Date of Birth: 01/18/2023
Sire: Coleman Full Deck 118
Dam: Coleman Blossom 1103

This outstanding calving ease sire who was the \$100,000 one-half interest for a \$200,000 valuation feature of the 2024 Coleman Bull Sale. He is an outcross sire and by the \$120,000 Coleman Full Deck 118 who was the top-selling bull of the 2024 Your Maternal Source Sale. His mother is a daughter of the record selling Coleman Bravo 6313 back to the feature Blossom family that has been one of the leading cow families in Canada.

Donor Care Facility

Embryo Collection, Freezing & Transplants

IVF - In Vitro Fertilization

Export Certified

In-Clinic & On Farm Services

OVS Semen Production & Freezing

Bova-Tech Ltd.

P.O. Box 80142 Airdrie, Alberta T4B 2V8 Canada
Tel: (403) 332-1567 E-mail: info@bova-tech.com



Bova-Tech Ltd.

B T L



EMBRYOS FOR SALE

WWW.BOVA-TECH.COM

(403) 332-1567



Coleman 708
RESOURCE



A big-ribbed and stoutly-constructed 3rd generation donor in the program. Descending from a dam with progeny ratios of BR 6@92; WR 6@106 and YR 5@103 and a grandam showing a progeny record of BR 5@99; WR 5@102; YR 5@102; IMF 72@102; RE 72@100, Rita 7204 posts a progeny record of BR 3@100; WR 3@100; YR 3@100 and IMF 5@113 with a calving interval of 4@361.

Montana Just In Time 1080, her son, is a herd sire prospect, while another son, Guideline 9304, was the lead-off War Party 1472 son selected by Gilliland Livestock of CA in the 2020 sale.

Coleman Resource 708 is a true "Cattleman's Kind" of Angus bull. He is loaded with muscle, and dimension, along with tremendous body, and perfect feet, and comes at you in an eye appealing package. Coleman Resource 708 has done it the old fashion way, in the breeding pasture. His daughters have beautiful udders, perfect feet, and wean off heavy calves. He is by the Pathfinder Sire who has carried on the Rito lineage and back to a daughter of Coleman Manning 0299 and back to the \$93,000 valued past top-selling Coleman Donna 005. He is a great grandson of the \$200,000 valued Coleman Donna 386.

Donor Care Facility

Embryo Collection, Freezing & Transplants

IVF - In Vitro Fertilization

Export Certified

In-Clinic & On Farm Services

Recipient Programs



Bova-Tech Ltd.

**P.O. Box 80142 Airdrie, Alberta T4B 2V8 Canada
Tel: (403) 332-1567 E-mail: info@bova-tech.com**



Bova-Tech Ltd.

B T L



EMBRYOS FOR SALE

WWW.BOVA-TECH.COM

(403) 332-1567



A big-ribbed and stoutly-constructed 3rd generation donor in the program. Descending from a dam with progeny ratios of BR 6@92; WR 6@106 and YR 5@103 and a grandam showing a progeny record of BR 5@99; WR 5@102; YR 5@102; IMF 72@102; RE 72@100, Rita 7204 posts a progeny record of BR 3@100; WR 3@100; YR 3@100 and IMF 5@113 with a calving interval of 4@361.

Montana Just In Time 1080, her son, is a herd sire prospect, while another son, Guideline 9304, was the lead-off War Party 1472 son selected by Gilliland Livestock of CA in the 2020 sale.

Haroldson's AH Alpine 271L is gathering much attention. His hair, structure, and natural muscle shape – not to mention his impressive paperwork – are just a few of his standout attributes. After fetching an impressive \$118,000 sale price, his fan base only grew, with multiple requests for semen from critical breeders. The only semen ever offered was Freeze '24 where 6 units brought a whopping \$1,800 per unit. Alpine is the next up and comer. He possesses more positive attributes than any bull we've seen in some time. Perfect hind leg, big backed, incredible softness and just good looking from every position. Early reports say calves are coming easy with loads of vigor.

Donor Care Facility

Embryo Collection, Freezing & Transplants

IVF - In Vitro Fertilization

Export Certified

In-Clinic & On Farm Services

OWS Semen Production & Freezing

Bova-Tech Ltd.

P.O. Box 80142 Airdrie, Alberta T4B 2V8 Canada
Tel: (403) 332-1567 E-mail: info@bova-tech.com



Bova-Tech Ltd.

B T L



EMBRYOS FOR SALE

WWW.BOVA-TECH.COM

(403) 332-1567



HILL VALLEY
RECKONING
931



A big-ribbed and stoutly-constructed 3rd generation donor in the program. Descending from a dam with progeny ratios of BR 6@92; WR 6@106 and YR 5@103 and a grandam showing a progeny record of BR 5@99; WR 5@102; YR 5@102; IMF 72@102; RE 72@100, Rita 7204 posts a progeny record of BR 3@100; WR 3@100; YR 3@100 and IMF 5@113 with a calving interval of 4@361.

Montana Just In Time 1080, her son, is a herd sire prospect, while another son, Guideline 9304, was the lead-off War Party 1472 son selected by Gilliland Livestock of CA in the 2020 sale.

Reckoning was the reigning Intermediate Angus Champion at both the 2021 OKC Cattlemen's Congress & 2020 NAILE! His dam was an extremely successful multiple-time champion at all levels and is now producing breed changers.

Reckoning is extremely up-headed & clean fronted with cool neck extension! He possesses ultra-flexible joints with desirable body depth, dimension and muscle shape. Hair quality is a BONUS too. His sire, Believe, is one of Canada's highly valuable sires of recent times.

Reckoning is not only a bull to improve show quality, but is a great choice to improve herds of all types with his tremendous breed character, testicle shape, joint & foot quality, and overall excellent phenotype!

Donor Care Facility

Embryo Collection, Freezing & Transplants

IVF - In Vitro Fertilization

Export Certified

In-Clinic & On Farm Services

Recipient Programs

Bova-Tech Ltd.

P.O. Box 80142 Airdrie, Alberta T4B 2V8 Canada
Tel: (403) 332-1567 E-mail: info@bova-tech.com



Bova-Tech Ltd.

B T L



EMBRYOS FOR SALE

WWW.BOVA-TECH.COM

(403) 332-1567



J TRADEMARK 1037



A big-ribbed and stoutly-constructed 3rd generation donor in the program. Descending from a dam with progeny ratios of BR 6@92; WR 6@106 and YR 5@103 and a grandam showing a progeny record of BR 5@99; WR 5@102; YR 5@102; IMF 72@102; RE 72@100, Rita 7204 posts a progeny record of BR 3@100; WR 3@100; YR 3@100 and IMF 5@113 with a calving interval of 4@361.

Montana Just In Time 1080, her son, is a herd sire prospect, while another son, Guideline 9304, was the lead-off War Party 1472 son selected by Gilliland Livestock of CA in the 2020 sale.

The newest herd bull in the Coleman program that was selected as the \$165,000 top-selling bull with Conley Cattle of Sulphur, Oklahoma from the Cattleman's Cut Sale in Nebraska. He is a heifer bull with added performance and is the highest \$C son of Sitz Resilient 10208 in the breed and ranks in the top 1% for \$M. He has an outcross pedigree with tremendous phenotype. His mother is a tremendous producer with six head at 103 on weaning and a calving interval of 347 on six head and stems from a long line of productive Georgina females, that have longevity.

Donor Care Facility Embryo Collection, Freezing & Transplants IVF - In Vitro Fertilization Export Certified In-Clinic & On Farm Services OWS Semen Production & Freezing

Bova-Tech Ltd.

P.O. Box 80142 Airdrie, Alberta T4B 2V8 Canada
Tel: (403) 332-1567 E-mail: info@bova-tech.com



Bova-Tech Ltd.

B T L



EMBRYOS FOR SALE

WWW.BOVA-TECH.COM

(403) 332-1567



Montana 1038

JUDGEMENT



A big-ribbed and stoutly-constructed 3rd generation donor in the program. Descending from a dam with progeny ratios of BR 6@92; WR 6@106 and YR 5@103 and a grandam showing a progeny record of BR 5@99; WR 5@102; YR 5@102; IMF 72@102; RE 72@100, Rita 7204 posts a progeny record of BR 3@100; WR 3@100; YR 3@100 and IMF 5@113 with a calving interval of 4@361.

Montana Just In Time 1080, her son, is a herd sire prospect, while another son, Guideline 9304, was the lead-off War Party 1472 son selected by Gilliland Livestock of CA in the 2020 sale.



Evaluated by many astute cowmen as one of the most complete, fault-free bulls the breed has ever produced, Judgement was selected by a diverse and visionary set of breeders as the \$180,000 record-selling bull of the 2022 Montana Maternal Revival Sale. A revolutionary sire for type, maternal excellence, feed efficiency, fertility and cow longevity – the real-world profit drivers for ranchers, Judgement excels for growth relative to mature size, and gain relative to consumption.

Dominant in his muscle shape, with a huge top and expressive quarter, combined with a chiseled stifle, Judgement exhibited early sexual maturity with a beautiful crest, robust scrotal and a slick, shiny haircoat. A three-dimensional stud whose massive volume, base width and length sets a new standard, Judgement is ideal in his hoof design and travels with a long, effortless stride.

Donor Care Facility

Embryo Collection, Freezing & Transplants

IVF - In Vitro Fertilization

Export Certified

In-Clinic & On Farm Services

OVS Semen Production & Freezing

Bova-Tech Ltd.

P.O. Box 80142 Airdrie, Alberta T4B 2V8 Canada
Tel: (403) 332-1567 E-mail: info@bova-tech.com



Bova-Tech Ltd.

B T L



EMBRYOS FOR SALE

WWW.BOVA-TECH.COM

(403) 332-1567



SAV 1441 Resource



A big-ribbed and stoutly-constructed 3rd generation donor in the program. Descending from a dam with progeny ratios of BR 6@92; WR 6@106 and YR 5@103 and a grandam showing a progeny record of BR 5@99; WR 5@102; YR 5@102; IMF 72@102; RE 72@100, Rita 7204 posts a progeny record of BR 3@100; WR 3@100; YR 3@100 and IMF 5@113 with a calving interval of 4@361.

Montana Just In Time 1080, her son, is a herd sire prospect, while another son, Guideline 9304, was the lead-off War Party 1472 son selected by Gilliland Livestock of CA in the 2020 sale.

Top 1% of the breed for: Weaning Weight, Yearling Weight, Total Maternal, REA and Carcass Weight Top 2% for Scrotal circumference Resource is one of the most iconic bulls in the breed; Resource is the most popular sire in the Genex lineup due to his ability to sire growth, carcass merit and maternal ability in a desirable package. Resource brings to the table the basics of efficiency and natural fleshing ability, with thickness, muscle, masculinity, superb structure, feet quality and authentic breed character. Resource sons have unprecedented performance and industry appeal, while his daughters are making superb brood cows with high quality udders and abundant milk.

Donor Care Facility

Embryo Collection, Freezing & Transplants

IVF - In Vitro Fertilization

Export Certified

In-Clinic & On Farm Services

Recipient Programs



Bova-Tech Ltd.

P.O. Box 80142 Airdrie, Alberta T4B 2V8 Canada
Tel: (403) 332-1567 E-mail: info@bova-tech.com



Bova-Tech Ltd.

B T L



EMBRYOS FOR SALE

WWW.BOVA-TECH.COM

(403) 332-1567



SAN 6846
RAINFALL



A big-ribbed and stoutly-constructed 3rd generation donor in the program. Descending from a dam with progeny ratios of BR 6@92; WR 6@106 and YR 5@103 and a grandam showing a progeny record of BR 5@99; WR 5@102; YR 5@102; IMF 72@102; RE 72@100, Rita 7204 posts a progeny record of BR 3@100; WR 3@100; YR 3@100 and IMF 5@113 with a calving interval of 4@361.

Montana Just In Time 1080, her son, is a herd sire prospect, while another son, Guideline 9304, was the lead-off War Party 1472 son selected by Gilliland Livestock of CA in the 2020 sale.

Rainfall is a standout from a landmark flush at Schaff's Angus Valley with credentials to write a whole new chapter in Angus history. He combines dominating phenotype, superior confirmation and outlier thickness, muscle shape, capacity and pounds, while blending a fresh pedigree, proven outcross calving ease genetics and the greatest maternal cow in the Angus breed.

He sires added length, soundness and unmistakable herd bull presence in his sons. His daughters are stunning in an elegant maternal package. He sets himself apart with his dominating hip and rear-leg structure with muscle shape and flawless phenotype. A \$ Weaning leader that offers strong MARB and REA predictions in an easy fleshing, big-bodied, good footed design. He brings calving ease, maternal strength and performance together - fundamental elements to build from.

Donor Care Facility

Embryo Collection, Freezing & Transplants

IVF - In Vitro Fertilization

Export Certified

In-Clinic & On Farm Services

OWS Semen Production & Freezing



Bova-Tech Ltd.

**P.O. Box 80142 Airdrie, Alberta T4B 2V8 Canada
Tel: (403) 332-1567 E-mail: info@bova-tech.com**



Bova-Tech Ltd.

B T L



Embryo
Transplants

www.bova-tech.com

Improving Herd Genetics

Embryos For Sale

www.bova-tech.com

PH: (403) 332-1567



5226

NU-HORIZON

Missie

Nu-Horizon Missie 522C is a complete female that keeps producing what we love, with her feminine eye appeal, she is loaded with rib, an excellent udder and great feet. 522C who raised Gold Buckle 92E, the high selling bull in Hamilton Farms Bull Sale in 2018.



SAV

6846



RAINFALL

Rainfall is a standout from a landmark flush at Schaff's Angus Valley with credentials to write a whole new chapter in Angus history. He combines dominating phenotype, superior confirmation and outlier thickness, muscle shape, capacity and pounds, while blending a fresh pedigree, proven outcross calving ease genetics and the greatest maternal cow in the Angus breed.

He sires added length, soundness and unmistakable herd bull presence in his sons. His daughters are stunning in an elegant maternal package. He sets himself apart with his dominating hip and rear-leg structure with muscle shape and flawless phenotype. A \$ Weaning leader that offers strong MARB and REA predictions in an easy fleshing, big-bodied, good footed design. He brings calving ease, maternal strength and performance together – fundamental elements to build from.



P.O. Box 80142 Airdrie, Alberta T4B 2V8 Canada

Donor Care
Facility

Embryo Collection,
Freezing & Transplant:

IVF - In Vitro
Fertilization

Export
Certified

In-Clinic & On
Farm Services

Recipient
Programs

Bova-Tech Ltd.

B T L



Embryo
Transplants

www.bova-tech.com

Improving Herd Genetics

Embryos For Sale

www.bova-tech.com

PH: (403) 332-1567



P417

PILGRIM

Dixie Erica

A daughter of the \$67,500 ABS Global AI sire, SAV Brilliance 8077, back to a daughter of BC Classic 385-7 and the Erica family. This female has been a tremendous producer with loads of body in a beautiful package with a big, stout, square hip and impressive muscle. She is an easy-fleshing female that has a beautiful udder and has done an excellent job in the program.



HILL VALLEY RECKONING

931



Reckoning was the reigning Intermediate Angus Champion at both the 2021 OKC Cattlemen's Congress & 2020 NAILE! His dam was an extremely successful multiple-time champion at all levels and is now producing breed changers. Reckoning is extremely up-headed & clean fronted with cool neck extension! He possesses ultra-flexible joints with desirable body depth, dimension and muscle shape. Hair quality is a BONUS too. His sire, Believe, is one of Canada's highly valuable sires of recent times.

Reckoning is not only a bull to improve show quality, but is a great choice to improve herds of all types with his tremendous breed character, testicle shape, joint & foot quality, and overall excellent phenotype!

P.O. Box 80142 Airdrie, Alberta T4B 2V8 Canada

Donor Care
Facility

Embryo Collection,
Freezing & Transplants

IVF - In Vitro
Fertilization

Export
Certified

In-Clinic & On
Farm Services

OVS Semen
Production & Freezing



Bova-Tech Ltd.

B T L

Embryos for Sale

www.bova-tech.com

(403) 332-1567



Merit  1054J
INVESTMENT



Red Minburn May 300Y is a full sister to the breed legend, Red Minburn Copenhagen! Copenhagen and another full sister took Agribition by storm in 2011 at a figure of \$67,000 for Copenhagen to U2 Ranch and Heart of the Valley. Copenhagen daughters were a highlight at the U2 dispersal bringing some long dollars while Copenhagen semen, while limited in it's availability has commanded over \$300 a straw. 300Y is an absolute mirrored image of what a Copenhagen daughter looks like. Sound, good footed, productive cows.

Merit Investment 1054J was the high selling bull at the Merit Bull Sale for \$85,000 in a hotly contested battle. His dam has done so much for the industry already with many top sellers for many folks.



Donor Care Facility Embryo Collection, Freezing & Transplants IVF - In Vitro Fertilization Export Certified In-Clinic & On Farm Services Recipient Programs



Bova-Tech Ltd.

P.O. Box 80142 Airdrie, Alberta T4B 2V8 Canada

Tel: (403) 332-1567 E-mail: info@bova-tech.com



Bova-Tech Ltd.

B T L



Embryos for Sale

www.bova-tech.com

(403) 332-1567

RIVERBEND

314



VIN-MAR

9563

O'Reilly Factor



Queen 314N is a maternal sister to Select Sires' calving easy and top carcass bull EXT Traveler 205.

Her first daughter was Res. Grand Champion at the Canadian Junior National. She is both a genetic gem, and a powerful front pasture cow that originates from the prestigious Riverbend Ranch.

Queen 314 is phenomenal in her phenotype, and flaw less in her production.

Vin-Mar O'Reilly is an extremely unique combination of flawless phenotype and structure. This bull is as big boned, thick made, and sound.

O'Reilly Factor was the most phenotypically imposing Angus bull shown at the 2011 NWSS that combined calving ease EPDs with and extraordinary growth. Many cattlemen admired the extra bone, body, style, and muscle shape that he possesses. He's an easy fleshing bull like his sire Final Answer, as balanced as the come and easy to look at.

Donor Care Facility

Embryo Collection, Freezing & Transplants

IVF - In Vitro Fertilization

Export Certified

In-Clinic & On Farm Services

Recipient Programs

Bova-Tech Ltd.

P.O. Box 80142 Airdrie, Alberta T4B 2V8 Canada

Tel: (403) 332-1567 E-mail: info@bova-tech.com



Bova-Tech Ltd.

B T L



EMBRYOS FOR SALE

WWW.BOVA-TECH.COM

(403) 332-1567



EMPRESS



Rudow's Empress 677 looks are double take material. Proven calving ease on both sides of her lineage with royal status. Sired by the epic king pin of low birth plus maternal efficiency OCC Homer 650H. Her dam is sired by the proven low input calving ease and phenotypic sire OCC You Bet 800Y. That being said 677 is built to produce low birth efficient herd sires and daughters that produce the same kind!



You will not find a beef bull like this, Blair's External Law has more power, more mass and more dimension than most angus bulls. His dam 74A stands as the hottest cow in the industry, winning Agribition, she brought a truckload of money but was worth every cent proving her value wasn't on the end of a lead it was in the donor pen, she is a production powerhouse. You could not draw a prettier udder with perfect front and rear udder attachment, perfect sized teats all on a broody made, wedgy female any better than what hit this earth when 74A came on the scene. She has made her mark across the globe.

Donor Care Facility Embryo Collection, Freezing & Transplants IVF - In Vitro Fertilization Export Certified In-Clinic & On Farm Services Recipient Programs



Bova-Tech Ltd.

P.O. Box 80142 Airdrie, Alberta T4B 2V8 Canada

Tel: (403) 332-1567 E-mail: info@bova-tech.com



Bova-Tech Ltd.

B T L



EMBRYOS FOR SALE

WWW.BOVA-TECH.COM

(403) 332-1567



CONNELY
Craftsman
070R



Rudow's Empress 677 looks are double take material. Proven calving ease on both sides of her lineage with royal status. Sired by the epic king pin of low birth plus maternal efficiency OCC Homer 650H. Her dam is sired by the proven low input calving ease and phenotypic sire OCC You Bet 800Y. That being said 677 is built to produce low birth efficient herd sires and daughters that produce the same kind!

The single most talked about bull of the Spring 2022 sales season, CRAFTSMAN was the \$500,000 record setting high seller at Connealy's sale! CRAFTSMAN posted very impressive performance ratios of 120@WW, 119@YW, 154@IMF and 107@RE in a large contemporary group. Sired by Sitz Resilient out of an impressive young Niobrara daughter,

CRAFTSMAN's physical presence and breed character add to his overall package. He is striking though his front 1/3 and offers great length and shape down his top with combined with excellent structural integrity. Highly sought after for his combination of \$M and \$C, along with the parts that compile those indexes. Mating options and directions are endless with CRAFTSMAN!

Donor Care Facility Embryo Collection, Freezing & Transplants IVF - In Vitro Fertilization Export Certified In-Clinic & On Farm Services Recipient Programs



Bova-Tech Ltd.

P.O. Box 80142 Airdrie, Alberta T4B 2V8 Canada
Tel: (403) 332-1567 E-mail: info@bova-tech.com



Bova-Tech Ltd.

B T L



EMBRYOS FOR SALE

WWW.BOVA-TECH.COM

(403) 332-1567



DUFF
JC For Real
16250



Rudow's Empress 677 looks are double take material. Proven calving ease on both sides of her lineage with royal status. Sired by the epic king pin of low birth plus maternal efficiency OCC Homer 650H. Her dam is sired by the proven low input calving ease and phenotypic sire OCC You Bet 800Y. That being said 677 is built to produce low birth efficient herd sires and daughters that produce the same kind!



Duff JC For Real will add muscle, length of body, style, and massive rib shape. His daughters are super feminine with a ton of capacity.

His sons are powerful, very masculine, loaded with rib and body.

Proven producer of in-demand offspring, sire of the top-selling Angus bull of the 2021 Power Plus Bull Sale for 90,000 Duff Real Deal. Sire of the top-selling Angus Female of the 2021 Holiday Kickoff Sale for \$50,000.

Donor Care Facility Embryo Collection, Freezing & Transplants IVF - In Vitro Fertilization Export Certified In-Clinic & On Farm Services Recipient Programs

Bova-Tech Ltd.

P.O. Box 80142 Airdrie, Alberta T4B 2V8 Canada

Tel: (403) 332-1567 E-mail: info@bova-tech.com



Bova-Tech Ltd.

B T L



EMBRYOS FOR SALE

WWW.BOVA-TECH.COM

(403) 332-1567



Duff

19115

REAL DEAL



Rudow's Empress 677 looks are double take material. Proven calving ease on both sides of her lineage with royal status. Sired by the epic king pin of low birth plus maternal efficiency OCC Homer 650H. Her dam is sired by the proven low input calving ease and phenotypic sire OCC You Bet 800Y. That being said 677 is built to produce low birth efficient herd sires and daughters that produce the same kind!

Duff Real Deal was the top selling bull through the 2021 Power Plus Bull Sale, ranked top 1% for DMI and \$EN, along with an extra shot of power and style, with real maternal built in genetically. Perfectly emulates his name, he is a striking individual with abundant muscle, rib shape, and eye appeal all his own.

Real Deal's dam, Duff 3570, is out of the well-known female sire GCC Total Recall 806T. She represents the exact type of Angus female we strive to breed. 3570 is ultra-feminine, eye appealing, fertile, and productive.

Donor Care Facility Embryo Collection, Freezing & Transplants IVF - In Vitro Fertilization Export Certified In-Clinic & On Farm Services Recipient Programs



Bova-Tech Ltd.

P.O. Box 80142 Airdrie, Alberta T4B 2V8 Canada

Tel: (403) 332-1567 E-mail: info@bova-tech.com



Bova-Tech Ltd.

B T L



EMBRYOS FOR SALE

WWW.BOVA-TECH.COM

(403) 332-1567



Rudow's Empress 677 looks are double take material. Proven calving ease on both sides of her lineage with royal status. Sired by the epic king pin of low birth plus maternal efficiency OCC Homer 650H.

Her dam is sired by the proven low input calving ease and phenotypic sire OCC You Bet 800Y.

That being said 677 is built to produce low birth efficient herd sires and daughters that produce the same kind!

Haroldson's AH Alpine 271L is gathering much attention. His hair, structure, and natural muscle shape – not to mention his impressive paperwork – are just a few of his standout attributes. After fetching an impressive \$118,000 sale price, his fan base only grew, with multiple requests for semen from critical breeders. The only semen ever offered was Freeze '24 where 6 units brought a whopping \$1,800 per unit. Alpine is the next up and comer. He possesses more positive attributes than most bulls. Perfect hind leg, big backed, incredible softness and just good looking from every position. Early reports say calves are coming easy with loads of vigor.

Donor Care Facility

Embryo Collection, Freezing & Transplants

IVF - In Vitro Fertilization

Export Certified

In-Clinic & On Farm Services

OWS Semen Production & Freezing

Bova-Tech Ltd.

P.O. Box 80142 Airdrie, Alberta T4B 2V8 Canada

Tel: (403) 332-1567 E-mail: info@bova-tech.com



Bova-Tech Ltd.

B T L



EMBRYOS FOR SALE

WWW.BOVA-TECH.COM

(403) 332-1567



Rudow's Empress 677 looks are double take material. Proven calving ease on both sides of her lineage with royal status. Sired by the epic king pin of low birth plus maternal efficiency OCC Homer 650H. Her dam is sired by the proven low input calving ease and phenotypic sire OCC You Bet 800Y. That being said 677 is built to produce low birth efficient herd sires and daughters that produce the same kind!

LT Marquee 169L is one of the most widely admired Angus bulls in the industry, valued at \$1.4 million! He is supported by much more than a pedigree of significance, as his quality is defined by the history and tradition that makes up his prominent lineage.

Marquee will sire Angus cattle that excel fundamentally, offering the intangible assets that combined will put any breeding program in the "bright lights" offering a combination of phenotype and genotype.

169L is a sought after "outcross" sire that will complement the elite standard of phenotype that producers have become accustomed to in today's day and age.

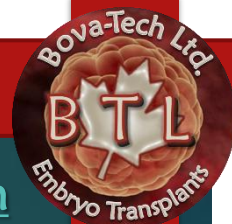
Donor-Care Facility Embryo Collection, Freezing & Transplants IVF - In Vitro Fertilization Export Certified In-Clinic & On Farm Services Recipient Programs

Bova-Tech Ltd.

**P.O. Box 80142 Airdrie, Alberta T4B 2V8 Canada
Tel: (403) 332-1567 E-mail: info@bova-tech.com**



Bova-Tech Ltd.



Embryos for Sale

www.bova-tech.com

(403) 332-1567

TAR 614
Donna



Straight out of the 2020 Coleman female sale, the beautifully designed Tar Donna 614 is a complete female that keeps producing what we love, offspring with some of the most alluring phenotypes of the breed with a balanced EPD's and low birthweights.

Donna 614 along with her feminine eye appeal, is stout and loaded with rib, an excellent udder and great feet. She is backed up with a **SOLID PEDEGREE** sire by the Pathfinder bull SAV Resource. Her Dam stems back to Coleman Regis 904 and OCC Juneau 807J. Her 2020 heifer calf sired by the \$450,000 for ½ interest Colman Bravo 6313 is an excellent example of proven maternal genetics.

LT Marquee 169L is one of the most widely admired Angus bulls in the industry, valued at \$1.4 million! He is supported by much more than a pedigree of significance, as his quality is defined by the history and tradition that makes up his prominent lineage. He will sire Angus cattle that excel fundamentally, offering the intangible assets that combined will put any breeding program in the "bright lights" offering a combination of phenotype and genotype. 169L is a sought after "outcross" sire that will complement the elite standard of phenotype that producers have become accustomed to in today's day and age.



Bova-Tech Ltd.

P.O. Box 80142 Airdrie, Alberta T4B 2V8 Canada

Tel: (403) 332-1567 E-mail: info@bova-tech.com



Donor Care Facility Embryo Collection, Freezing & Transplants Semen Production & Freezing Export Certified In-Clinic & On Farm Services IVF - In Vitro Fertilization

Bova-Tech Ltd.



Embryos for Sale

www.bova-tech.com

(403) 332-1567

TAR

614

Donna

SAV

1441

Resource



Straight out of the 2020 Coleman female sale, the beautifully designed Tar Donna 614 is a complete female that keeps producing what we love, offspring with some of the most alluring phenotypes of the breed with a balanced EPD's and low birthweights. Donna 614 along with her feminine eye appeal, is stout and loaded with rib, an excellent udder and great feet. She is backed up with a **SOLID PEDEGREE** sired by the Pathfinder bull SAV Resource. Her Dam stems back to Coleman Regis 904 and OCC Juneau 807J. Her 2020 heifer calf sired by the \$450,000 for ½ interest Colman Bravo 6313 is an excellent example of proven maternal genetics.

Top 1% of the breed for: Weaning Weight, Yearling Weight, Total Maternal, REA and Carcass Weight Top 2% for Scrotal circumference Resource is one of the most iconic bulls in the breed; Resource is the most popular sire in the Genex lineup due to his ability to sire growth, carcass merit and maternal ability in a desirable package. Resource brings to the table the basics of efficiency and natural fleshing ability, with thickness, muscle, masculinity, superb structure, feet quality and authentic breed character. Resource sons have unprecedented performance and industry appeal, while his daughters are making superb brood cows with high quality udders and abundant milk.



Bova-Tech Ltd.

P.O. Box 80142 Airdrie, Alberta T4B 2V8 Canada

Tel: (403) 332-1567 E-mail: info@bova-tech.com



Donor Care
Facility

Embryo Collection,
Freezing & Transplants

IVF - In Vitro
Fertilization

Export
Certified

In-Clinic & On
Farm Services

Recipient
Programs

Bova-Tech Ltd.



Embryos for Sale

www.bova-tech.com

(403) 332-1567

TAR

Donna

614

IVF

SAV 004

DENSITY

4336



Straight out of the 2020 Coleman female sale, the beautifully designed Tar Donna 614 is a complete female that keeps producing what we love, offspring with some of the most alluring phenotypes of the breed with a balanced EPD's and low birthweights.

Donna 614 along with her feminine eye appeal, is stout and loaded with rib, an excellent udder and great feet. She is backed up with a SOLID PEDEGREE sired by the Pathfinder bull SAV Resource. Her Dam stems back to Coleman Regis 904 and OCC Juneau 807J. Her 2020 heifer calf sired by the \$450,000 for 1/2 interest Colman Bravo 6313 is an excellent example of proven maternal genetics.

Density 4336 has made his mark as one of the most influential maternal sires in the Angus breed. He is unmatched for his ability to consistently stamp his feminine heavy milking daughters with impeccable udder quality, broodiness, and maternal function. They are moderate framed efficient cows with superior production capabilities.

Density is a cow maker deluxe, his daughters are rising to the top at ranches across Canada and the USA. His sons are in demand due to their depth of body, muscle expression and they are correctly structured. He has been used worldwide on cows of all body types due to his consistent siring pattern.



Bova-Tech Ltd.

P.O. Box 80142 Airdrie, Alberta T4B 2V8 Canada
Tel: (403) 332-1567 E-mail: info@bova-tech.com



Donor Care
Facility

Embryo Collection,
Freezing & Transplants

IVF - In Vitro
Fertilization

Export
Certified

In-Clinic & On
Farm Services

Recipient
Programs

Bova-Tech Ltd.



Embryos for Sale

www.bova-tech.com

(403) 332-1567

TAR 614
Donna



SAV 6847
President



Straight out of the 2020 Coleman female sale, the beautifully designed Tar Donna 614 is a complete female that keeps producing what we love, offspring with some of the most alluring phenotypes of the breed with a balanced EPD's and low birthweights.

Donna 614 along with her feminine eye appeal, is stout and loaded with rib, an excellent udder and great feet. She is backed up with a **SOLID PEDEGREE** sired by the Pathfinder bull SAV Resource. Her Dam stems back to Coleman Regis 904 and OCC Juneau 807J. Her 2020 heifer calf sired by the \$450,000 for 1/2 interest Colman Bravo 6313 is an excellent example of proven maternal genetics.

SAV President 6847 was the world record and top-selling bull of the 2017 SAV sale at \$750,000 with a total valuation of \$938,500.

Incredible in his structure and powerful in his design, we believe President is the best Charlo son out of the No. 1 income producing cow in SAV history, SAV Blackcap May 4136.

To date, she has produced over \$10 million dollars in progeny sales. Thick and efficient, he is the future of performance Angus genetics.



Bova-Tech Ltd.

P.O. Box 80142 Airdrie, Alberta T4B 2V8 Canada
Tel: (403) 332-1567 E-mail: info@bova-tech.com



Donor Care Facility

Embryo Collection, Freezing & Transplants

IVF - In Vitro Fertilization

Export Certified

In-Clinic & On Farm Services

Recipient Programs

Bova-Tech Ltd.



Embryos for Sale

www.bova-tech.com

(403) 332-1567

TAR 614
Donna

SAV 6846
RAINFALL



Straight out of the 2020 Coleman female sale, the beautifully designed Tar Donna 614 is a complete female that keeps producing what we love, offspring with some of the most alluring phenotypes of the breed with balanced EPD's and low birthweights.

614 along with her feminine eye appeal, is stout and loaded with rib, an excellent udder and great feet. She is backed up with a **SOLID PEDEGREE** sired by the Pathfinder bull SAV Resource. Her Dam stems back to Coleman Regis 904 and OCC Juneau 807J.

Her 2020 heifer calf, sired by Coleman Bravo 6313 sold for \$450,000 for ½ interest, is an excellent example of proven maternal genetics.

Rainfall is a standout from a landmark flush at Schaff's Angus Valley with credentials to write a whole new chapter in Angus history. He combines dominating phenotype, superior confirmation and outlier thickness, muscle shape, capacity and pounds, while blending a fresh pedigree, proven outcross calving ease genetics and the greatest maternal cow in the Angus breed.

He sires added length, soundness and unmistakable herd bull presence in his sons. His daughters are stunning in an elegant maternal package. He sets himself apart with his dominating hip and rear-leg structure with muscle shape and flawless phenotype. A \$ Weaning leader that offers strong MARB and REA predictions in an easy fleshing, big-bodied, good footed design. He brings calving ease, maternal strength and performance together – fundamental elements to build from.



Bova-Tech Ltd.

P.O. Box 80142 Airdrie, Alberta T4B 2V8 Canada

Tel: (403) 332-1567 E-mail: info@bova-tech.com



Donor Care Facility Embryo Collection, Freezing & Transplants Semen Production & Freezing Export Certified In-Clinic & On Farm Services IVF - In Vitro Fertilization

Bova-Tech Ltd.

B T L



www.bova-tech.com

Embryo
Transplants

Improving Herd Genetics

IVF Embryos

www.bova-tech.com

PH: (403) 332-1567

A high numbered daughter of Basin Excitement and featured Blue Ribbon family from the Whitestone program. This female excels from an EPD standpoint coupled with outstanding performance and phenotype. She is a three generation AI female with big numbers. She had an individual weaning ratio of 114, a yearling ratio of 113 and an EPD value of +164.74 for dollar beef. She stems from a dam that records WR 2@111, YR 2@115, %IMF2@ 113, UREA 2@105 with one daughter in production with an average nursing ratio of 103. Her 2018 bull calf has been retained in the Whitestone program.

Whitestone
BLUE RIBBON
5105



J TRADEMARK
1037 **TM**



The newest herd bull in the Coleman program that was selected as the \$165,000 top-selling bull with Conley Cattle of Sulphur, Oklahoma from the Cattleman's Cut Sale in Nebraska. He is a heifer bull with added performance and is the highest \$C son of Sitz Resilient 10208 in the breed and ranks in the top 1% for \$M. He has an outcross pedigree with tremendous phenotype. His mother is a tremendous producer with six head at 103 on weaning and a calving interval of 347 on six head and stems from a long line of productive Georgina females, that have longevity.



P.O. Box 80142 Airdrie, Alberta T4B 2V8 Canada

**Donor Care
Facility**

**Embryo Collection,
Freezing & Transplants**

**IVF - In Vitro
Fertilization**

**Export
Certified**

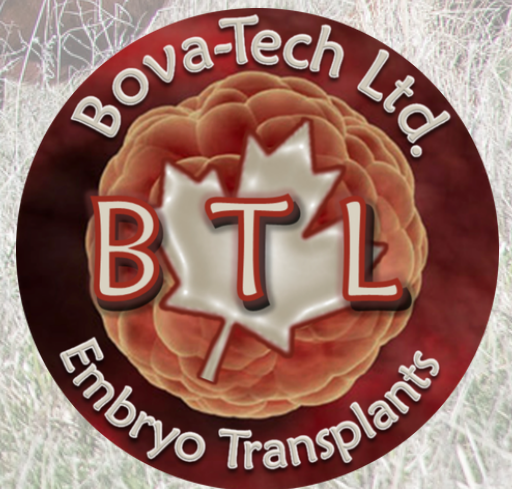
**In-Clinic & On
Farm Services**

**Recipient
Programs**

RED ANGUS

EMBRYOS

For Sale



Bova-Tech Ltd.

B T L



Embryos for Sale

www.bova-tech.com

(403) 332-1567

Red ACC

LAMBDA 1Z



CREED 214C



A blend of a well-known pedigrees and a top donor cow from Anderson cattle Co. Red ACC Lambda 1Z is a dark red, moderated framed with lots of muscle definition and a high milk EPD. She is the dam of Red ACC Bigshot 118E a bull that surprised everyone in the spring when he was purchased by a syndicate during the 2018 bull sale.

1Z is a very stylish smooth fronted cow with lot of eye appeal. She is a really good cow with another outstanding calve at side this year, weaned on August 14th weighing 751 pounds at around 6.5 months of age.

Herd sires with the ability to combine the power that Red Wheel Creed possesses with exceptional maternal strength in an outcross pedigree are rare to find. Creed has the length of spine, muscle expression, bone and foot size which he transmits into his calves. This bull is backed by an exceptional dam and cow family. Creed's dam, Black Wheel Jestress 1Y is a herd bull producing female. The Jestress cow family is noted for exceptional udders and hoof quality and being big ribbed productive females. A few straws of semen were available during the Pinnacle Sale in 2018, the quest for the very best Red Angus seedstock in Canada may be found. the significance of this great breeding bull is fully demonstrated throughout the pedigree, statistical information and the footnote discussion. this breeding bull, with progeny on the ground, is an opportunity to obtain the influence of one of the most dynamic breeding bulls in the industry today.



2020
Offspring



Donor Care Facility

Embryo Collection, Freezing & Transplants

IVF - In Vitro Fertilization

Export Certified

In-Clinic & On Farm Services

Recipient Programs

Bova-Tech Ltd.

P.O. Box 80142 Airdrie, Alberta T4B 2V8 Canada

Tel: (403) 332-1567 E-mail: info@bova-tech.com





RED ACC
Roxie 81C

Here is a smooth, long bodied feminine cow that comes from a well backed family. Her daughter 32F has been stealing the spotlight her whole life and made the championship drive in the Little Lady Classic at Ag Ex. Her dam and granddam pattern very similar to her, moderate framed, level udder floor, lots of capacity, shape and natural thickness.



SSS

TYCOON

225E

Tycoon comes from the outstanding SSS program and has been used extensively in W Sunrise Angus and Y Coulee programs. He has an impressive profile, proud front and great feet and soundness with an impressive calving ease sire with a hard to fault pedigree. He is a dark red, masculine sire, that carries himself flawlessly in the bull pen. Consistency and phenotype speak for itself.



Donor Care Facility

Embryo Collection, Freezing & Transplants

IVF - In Vitro Fertilization

Export Certified

In-Clinic & On Farm Services

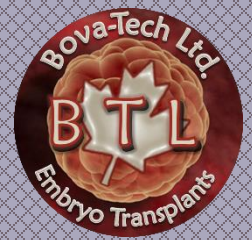
Recipient Programs

Bova-Tech Ltd.

P.O. Box 80142 Airdrie, Alberta T4B 2V8 Canada

Tel: (403) 332-1567 E-mail: info@bova-tech.com





RED ACC 13B *Tibbie*



Red ACC Tibbie 13B is out of a very productive red cow. This red, moderate framed cow is made correct and true. She has a style and broodiness combined with a very unique pedigree. Red Tibbie is a feminine easy fleshing cow with a perfect udder and great rib.



SSS

TYCOON

225E



Tycoon Sons

Tycoon comes from the outstanding SSS program and has been used extensively in W Sunrise Angus and Y Coulee programs. He has an impressive profile, proud front and great feet and soundness with an impressive calving ease sire with a hard to fault pedigree. He is a dark red, masculine sire, that carries himself flawlessly in the bull pen. Consistency and phenotype speak for itself.



Donor Care Facility

Embryo Collection, Freezing & Transplants

IVF - In Vitro Fertilization

Export Certified

In-Clinic & On Farm Services

Recipient Programs

Bova-Tech Ltd.

P.O. Box 80142 Airdrie, Alberta T4B 2V8 Canada
Tel: (403) 332-1567 E-mail: info@bova-tech.com



Bova-Tech Ltd.

B T L

Embryos for Sale

www.bova-tech.com

(403) 332-1567



RED ACC 13B
Tibbie



Red ACC Tibbie 13B is out of a very productive red cow. This red, moderate framed cow is made correct and true. She has a style and broodiness combined with a very unique pedigree. Red Tibbie is a feminine easy fleshing cow with a perfect udder and great rib.

U-2
Reckoning 149A



High selling Red Angus to Six Mile for \$46,000 for 1/2 interest.

Reckoning progeny are the right kind of cattle with a superior foot quality, added volume and very important- easy to market. The list of high sellers sired by Reckoning is very impressive due to how its progeny works in the real world and show ring. value.



Daughters of Red U-2 Reckoning



Donor Care Facility

Embryo Collection, Freezing & Transplants

IVF - In Vitro Fertilization

Export Certified

In-Clinic & On Farm Services

Recipient Programs

Bova-Tech Ltd.

P.O. Box 80142 Airdrie, Alberta T4B 2V8 Canada
Tel: (403) 332-1567 E-mail: info@bova-tech.com



Bova-Tech Ltd.

B T L

Embryos for Sale

www.bova-tech.com

(403) 332-1567



Red ACC **TIBBIE** 98B



Red ACC Tibbie 98B has clean front structure, smooth makeup and refinement. This cow is admired for her sweet makeup and feminine features yet she is moderate and beefy.

With her easy-fleshing ability and exceptional mothering traits, 98B is a donor you won't want to miss using.



SSS

TYCOON

225E

Tycoon comes from the outstanding SSS program and has been used extensively in W Sunrise Angus and Y Coulee programs. He has an impressive profile, proud front and great feet and soundness with an impressive calving ease sire with a hard to fault pedigree. He is a dark red, masculine sire, that carries himself flawlessly in the bull pen. Consistency and phenotype speak for itself.



Donor Care Facility

Embryo Collection, Freezing & Transplants

IVF - In Vitro Fertilization

Export Certified

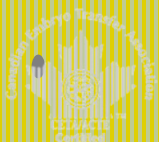
In-Clinic & On Farm Services

Recipient Programs

Bova-Tech Ltd.

P.O. Box 80142 Airdrie, Alberta T4B 2V8 Canada

Tel: (403) 332-1567 E-mail: info@bova-tech.com



Bova-Tech Ltd.

B T L

Embryos for Sale

www.bova-tech.com

(403) 332-1567



Red ACC **TIBBIE** 98B



Red ACC Tibbie 98B has clean front structure, smooth makeup and refinement. This cow is admired for her sweet makeup and feminine features yet she is moderate and beefy.

With her easy-fleshing ability and exceptional mothering traits, 98B is a donor you won't want to miss using.

RREDS **COMMON SENSE** G933

RREDS Common Sense G933 has all the mass and body of his sire. He is one of the most universal and complete bulls produced by Rhodes Red Angus. His mother is a coming 5 year old Code Red that hasn't missed. The Code red daughters have a way of raising high sellers.

Common Sense is one of the stoutest Seneca sons produced. If you are looking for the same body design as Seneca but want a bit more frame, Common Sense is a great choice. Great Angus character with high testosterone and athleticism.



Donor Care Facility

Embryo Collection, Freezing & Transplants

IVF - In Vitro Fertilization

Export Certified

In-Clinic & On Farm Services

Recipient Programs

Bova-Tech Ltd.

**P.O. Box 80142 Airdrie, Alberta T4B 2V8 Canada
Tel: (403) 332-1567 E-mail: info@bova-tech.com**



Red CCC
530C

Towaw Larkaba



PIE

222

HOLLYWOOD



Red CCC Towaw Larkaba 530C is dark red, deep bodied, long and feminine with a nice udder. She was a reserve Champion heifer at the 2016 Olds Fall Classic and Reserved Junior Yearling heifer at Farmfair International the same year.

Her maternal grandsire, Red TerRon Digger 11L, was a direct son of the great Ter-Ron Brandy 11C cow, and is the grand sire of the \$80,000 Red Cockburn Ribeye bull. He bred until he was 11 years old and was one of the soundest structured bulls ever used at Towaw. Her grandam, Larkaba 10M, is a direct Red Towaw Indeed 104H daughter.

Pie Hollywood is the world record selling Red Angus bull from the spring 2023 bull sale season, selling for \$400,000 valuation. His record setting appraisal is the result of his combination of curve bending calving ease and growth, breed leading carcass, captivating phenotype and is backed by the renown Abigrace cow family. We were not drawn to the bull by his outstanding numbers, but they are off the charts. We appreciate Hollywood for his massive phenotype and you couldn't put a better foot on a Red Angus bull.

**Semen
Production
& Freezing**

**Donor Care
Facility**

**Embryo Collection,
Freezing & Transplants**

**IVF - In Vitro
Fertilization**

**Export
Certified**

**In-Clinic & On
Farm Services**

**Recipient
Programs**

Bova-Tech Ltd.

P.O. Box 80142 Airdrie, Alberta T4B 2V8 Canada

Tel: (403) 332-1567 E-mail: info@bova-tech.com



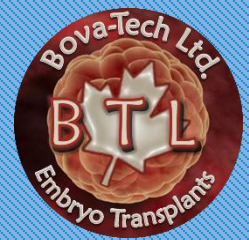
Bova-Tech Ltd.

B T L

Embryos for Sale

www.bova-tech.com

(403) 332-1567



Red

LONE STONE

Beula

35H



Red Lone Stone Beula 35H is a very well-made female that is well-balanced. Beula is the complete package, an impressive cow with a small frame build (5.0 to 5.5 frame score). She has a very nice temperament, beautiful coat, solid feet, and perfect udder. The potential for 35H to become a very productive cow and raise outstanding offspring is already proven with her well-formed bull calf that hit the ground this year.



PIE

222

HOLLYWOOD

Pie Hollywood is the world record selling Red Angus bull from the spring 2023 bull sale season, selling for \$400,000 valuation. His record setting appraisal is the result of his combination of curve bending calving ease and growth, breed leading carcass, captivating phenotype and is backed by the renown Abigrace cow family. We were not drawn to the bull by his outstanding numbers, but they are off the charts. We appreciate Hollywood for his massive phenotype and you couldn't put a better foot on a Red Angus bull.



Donor Care Facility

Embryo Collection, Freezing & Transplants

IVF - In Vitro Fertilization

Export Certified

In-Clinic & On Farm Services

Recipient Programs

Bova-Tech Ltd.

P.O. Box 80142 Airdrie, Alberta T4B 2V8 Canada

Tel: (403) 332-1567 E-mail: info@bova-tech.com



Bova-Tech Ltd.

B T L

Embryos for Sale

www.bova-tech.com

(403) 332-1567



Red

LONE STONE

Beula

35H



Red Lone Stone Beula 35H is a very well made female that is well-balanced. Buela is the complete package, an impressive cow with a small frame build (5.0 to 5.5 frame score). She has a very nice temperament, beautiful coat, solid feet, and perfect udder. The potential for 35H to become a very productive cow and raise outstanding offspring is already proven with her well-formed bull calf that hit the ground this year.

Red U2 284F

DOMINION

Red U2 Dominion 284F is an outcross sire who continues to make a name for himself as a sire who stamps his progeny with phenotype, foot quality, and stoutness. His pedigree has generations of maternal legends and a matron derived from a notable cow family known for fertility, calf performance, and udder quality.



Donor Care Facility

Embryo Collection, Freezing & Transplants

IVF - In Vitro Fertilization

Export Certified

In-Clinic & On Farm Services

Recipient Programs

Bova-Tech Ltd.

P.O. Box 80142 Airdrie, Alberta T4B 2V8 Canada

Tel: (403) 332-1567 E-mail: info@bova-tech.com



Bova-Tech Ltd.

B T L

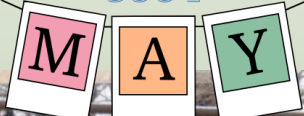
Embryos for Sale

www.bova-tech.com

(403) 332-1567

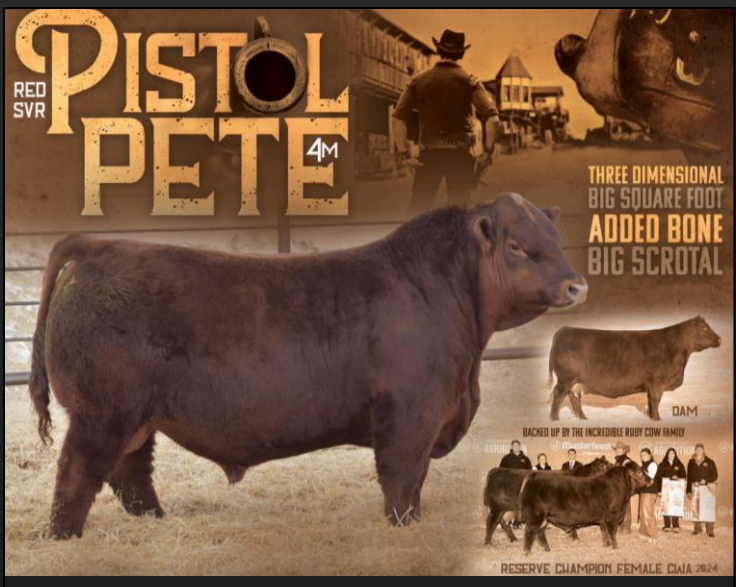


Red MINBURN 300Y



Red Minburn May 300Y is a full sister to the breed legend, Red Minburn Copenhagen! Copenhagen and another full sister took Agribition by storm in 2011 at a figure of \$67,000 for Copenhagen to U2 Ranch and Heart of the Valley. Copenhagen daughters were a highlight at the U2 dispersal bringing some long dollars while Copenhagen semen, while limited in it's availability, has commanded over \$300 a straw. 300Y is an absolute mirrored image of what a Copenhagen daughter looks like. Sound, good footed, productive cows.

The \$90,000 lead-off and high selling bull from the South View Ranch's 25th Annual Bull Sale. Pistol Pete 4M is full of red meat and muscle while still maintaining great eye appeal in a sound structured package. This guy is powerful and stout from any angle you view him, stands on a big square foot and is that ideal dark red color. His actual data is impressive with a great spread from birth to yearling and big scrotal. He was exhibited alongside his incredible 9-year-old dam where they were selected Reserve Champion Female at Agribition and Champion Senior Female at FarmFair.



Donor Care Facility

Embryo Collection, Freezing & Transplants

IVF - In Vitro Fertilization

Export Certified

In-Clinic & On Farm Services

Recipient Programs



Bova-Tech Ltd.

P.O. Box 80142 Airdrie, Alberta T4B 2V8 Canada

Tel: (403) 332-1567 E-mail: info@bova-tech.com



Bova-Tech Ltd.

B T L



Embryos for Sale

www.bova-tech.com

(403) 332-1567

Red SSF
271A
SCOTTS KARI

DUFF 1941
Red Wood



Kari 271A is a moderate framed cow carrying a lot of performance, she ranks top 2% of the breed for weaning weight, top 3% for yearling weight and top 4% for Maternal. She has an excellent feet and udder, very sound and well-made cow with an EPD on the top 1% for stay-ability.

Kari 271A has the phenotypic quality and genetic profile to enhance any program.

This Red Angus bull may be just as noble as the ancient redwood trees "Duff Redwood 1941". What a specimen he is in terms of depth of rib, fleshing ability and overall dimension in a moderate frame. Just like the coastal trees, you truly need to see Redwood for yourself to understand his overall quality and value.

Duff Redwood 1941 will undoubtedly leave deep roots in the beef industry.

Donor Care Facility

Embryo Collection, Freezing & Transplants

IVF - In Vitro Fertilization

Export Certified

In-Clinic & On Farm Services

Recipient Programs

Bova-Tech Ltd.

P.O. Box 80142 Airdrie, Alberta
T4B 2V8 Canada

Tel: (403) 332-1567 E-mail: info@bova-tech.com



Bova-Tech Ltd.

B T L



Embryos for Sale

www.bova-tech.com

(403) 332-1567

Red SSF
271A
SCOTT'S KARI

Red MRLA
Resource
137E



Kari 271A is a moderate frame cow carrying a lot of performance, she ranks top 2% of the breed for weaning weight, top 3 % for yearling weight and top 4% for Maternal.

She has an excellent feet and udder, very sound and well-made cow with an EPD on the top 1% for stayability.

Kari 271A has the phenotypic quality and genetic profile to enhance any program.



Son of MRLA
Resource sold for
\$130,000
March 2020



Resource's influence has been widely accepted across North America. His daughters at the U2 Dispersal topped at \$23,000 with 30 Open Resource daughters averaging \$9,000 at the U2 Dispersal.

A performance sire in a breed that has done a great job on calving ease and maternal instinct.

- Top 55% of the breed for weaning weight
- Top 15% of the breed for yearling weight
- Top 15% of the breed for scrotal circumference
- Top 8% of the breed for carcass weight
- Top 35% of the breed for ribeye
- Top 3% of the breed for mature weight

**Donor Care
Facility**

**Embryo Collection,
Freezing & Transplants**

**IVF - In Vitro
Fertilization**

**Export
Certified**

**In-Clinic & On
Farm Services**

**Recipient
Programs**

Bova-Tech Ltd.

P.O. Box 80142 Airdrie, Alberta T4B 2V8 Canada
Tel: (403) 332-1567 E-mail: info@bova-tech.com



Bova-Tech Ltd.

B T L



Embryos for Sale

www.bova-tech.com

(403) 332-1567

**Red SSF
271A
SCOTTS KARI**

**RED U-2
Authentic
139A**



Kari 271A is a moderate framed cow carrying a lot of performance, she ranks top 2% of the breed for weaning weight, top 3% for yearling weight and top 4% for Maternal.

She has excellent feet and udder, and is very sound and a well-made cow with an EPD on the top 1% for stay-ability. Kari 271A has the phenotypic quality and genetic profile to enhance any program.



Maternal greatness and sheer power are combined in this leading sire, Red U-2 Authentic 139A.

Authentic was a past high-selling bull at U2 and has gone on to be a potent breeder that has had positive production results for the three progressive breeders that own him. Phenotypically he is the ideal Red Angus sire, super clean fronted with an attractive head that will add length, power and over all completeness to his progeny. He is out of one of the great donors at U2, Stormy 7202T, and complimented by a stacked maternal pedigree!

**Donor Care
Facility**

**Embryo Collection,
Freezing & Transplants**

**IVF - In Vitro
Fertilization**

**Export
Certified**

**In-Clinic & On
Farm Services**

**Recipient
Programs**

Bova-Tech Ltd.

P.O. Box 80142 Airdrie, Alberta T4B 2V8 Canada

Tel: (403) 332-1567 E-mail: info@bova-tech.com



Bova-Tech Ltd.

B T L



Embryos for Sale

www.bova-tech.com

(403) 332-1567

Red SSF
271A
SCOTTS KARI

Red U2 284F
DOMINION

IVF



Kari 271A is a moderate framed cow carrying a lot of performance, she ranks top 2% of the breed for weaning weight, top 3% for yearling weight and top 4% for Maternal.

She has an excellent feet and udder, very sound and well-made cow with an EPD on the top 1% for stay-ability.

Kari 271A has the phenotypic quality and genetic profile to enhance any program.

**FEMALE
SEXED**

Red U2 Dominion 284F is an outcross sire who continues to make a name for himself as a sire who stamps his progeny with phenotype, foot quality, and stoutness.

His pedigree has generations of maternal legends and a matron derived from a notable cow family known for fertility, calf performance, and udder quality.

Donor Care Facility

Embryo Collection, Freezing & Transplants

IVF - In Vitro Fertilization

Export Certified

In-Clinic & On Farm Services

Recipient Programs

Bova-Tech Ltd.

P.O. Box 80142 Airdrie, Alberta
T4B 2V8 Canada

Tel: (403) 332-1567 E-mail: info@bova-tech.com



Bova-Tech Ltd.

B T L

Embryos for Sale

www.bova-tech.com

(403) 332-1567



Red U2

282B



REG#: 1795500

DOB: 30/01/2014

TATTOO: DUA 282B

Sire: RED U-2 RECON 192Y

Dam: RED U-2 ANEXA 271Y



Legendary herdbull who is still out breeding cows today. Sons still continue to top sales and daughters are some of the herd favourites. The \$58,000 sale feature from 2015 who adds extra bone, frame, and longevity.

REG#: 1739455

DOB: FEB. 16, 2013

TATTOO: DUA 439A

Sire: RED MINBURN COPENHAGEN 3Y

Dam: RED U-2 ANEXA 443Y

With a whopping 68 registered progeny in Canada alone, Red U2 Anexa 439A knows she is special. Responsible for so many top high sellers such as Blue Collar, Attractive, Don Julio, Fringe, Convo, Cabo, Patron, and Rocky, to name a few. She possesses a world-class feminine skull, hind leg, fertility, and foot design. Many daughters are breeding at top with multiple donor daughters.



Donor Care Facility

Embryo Collection, Freezing & Transplants

IVF - In Vitro Fertilization

Export Certified

In-Clinic & On Farm Services

Semen Production

Bova-Tech Ltd.

P.O. Box 80142 Airdrie, Alberta T4B 2V8 Canada

Tel: (403) 332-1567 E-mail: info@bova-tech.com



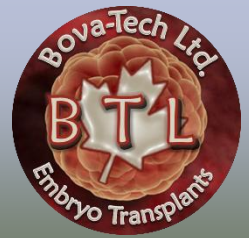
Bova-Tech Ltd.

B T L

Embryos for Sale

www.bova-tech.com

(403) 332-1567



**RED U2Q
PLAYBOY
2197K**



With a whopping 68 registered progeny in Canada alone, Red U2 Anexa 439A knows she is special.

Responsible for so many top high sellers such as Blue Collar, Attractive, Don Julio, Fringe, Convo, Cabo, Patron, and Rocky, to name a few. She possesses a world-class feminine skull, hind leg, fertility, and foot design. Many daughters are breeding at top with multiple donor daughters.

Red U2Q Playboy 2197K is a benefit-the-breed type of bull with a beautiful, clean design yet expansive muscle shape and exceptional front end and foot structure.

He was the \$62,000 sale feature from the U2 Quality Seedstock 2023 bull sale. His sire Red U2 Knockin' Boots 368G X his dam Red U2Q Queen 68H is a recipe for fleshy females with exceptional structure, fertility and udder design.

Donor Care Facility

Embryo Collection, Freezing & Transplants

IVF - In Vitro Fertilization

Export Certified

In-Clinic & On Farm Services

Semen Production

Bova-Tech Ltd.

P.O. Box 80142 Airdrie, Alberta T4B 2V8 Canada

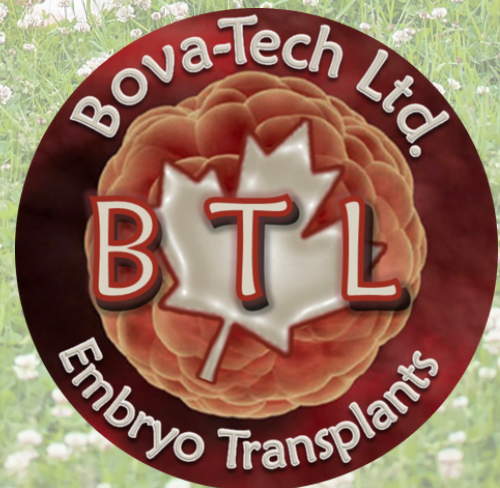
Tel: (403) 332-1567 E-mail: info@bova-tech.com



HEREFORD

EMBRYOS

For Sale



Bova-Tech Ltd.

B T L



Embryos for Sale

www.bova-tech.com

(403) 332-1567

AGA 46E 40T

Miss Britisher

CHURCHILL
Sensation 028X



Britisher 40T is impressive on her phenotype, a cow with great body depth and nice udder which make her unmatched on her character and eye appeal at the UH ranch.

40T is gaining momentum with her daughters in production; they are beautifully uddered, easy fleshing and moderate framed individuals that are carbon copies of her dam.

The breed's leading high accuracy calving ease bull that excels for both maternal and end product value.

Sensation ranks in the top 15% of the breed for 11 EPDs and Indexes!

Sensation has become the new gold standard for calving ease plus growth and carcass quality!

Donor Care Facility Embryo Collection, Freezing & Transplants IVF - In Vitro Fertilization Export Certified In-Clinic & On Farm Services Recipient Programs



Bova-Tech Ltd.

P.O. Box 80142 Airdrie, Alberta T4B 2V8 Canada

Tel: (403) 332-1567 E-mail: info@bova-tech.com



Bova-Tech Ltd.

B T L



Embryos for Sale

www.bova-tech.com

(403) 332-1567

BR 24W

179Y

Standard Lady

PDHR 20J

47R

Stanmore



AGA 191G STANDARD ET 73L

LBH 73L STANDARD 268P

LBH 22B MISS RED DOMINO 102M

DBHR 268P WATCHMAN 24W

C 93G LARCENY 86L

DBHR 86L ULTRA LADY 36N

DBHR ULTRA BRIT LASS 42H

BR 24W STANDARD LADY 179Y

CH 82B EXPLORER 122E

CC 122E EXCURSION 68J

CC 40T JILLIAN 58Y

DBHR 68J STANDARD 155S

AGA 656U STANDARD ET 124J

DBHR 124J STANDARD 144M

JLR STANDARD LADY 113C

CTY K STANMORE 4016D

AGA 4016 STANMORE 121G

AGA 99B CENTENNIAL 51D

AGA 121G STANMORE 20J

AGA 9012 STANMORE 40E

AGA40E MISS STANMORE 80G

AGA 16B MISS GENERATOR 20E

PDHR 20J STANMORE 47R

GENERATING STAR 18C

C 18C GENERAL D LAD 80G

AC MISS 10U STD COMMANDER 30Y

PDHR 80G GENERAL LASS 91K

JNHR DIAMOND 40B

PDHR MISS 40B DIAMOND 92E

PDHR MISS 18Y DOMINO LASS 53B

Donor Care Facility

Embryo Collection, Freezing & Transplants

IVF - In Vitro Fertilization

Export Certified

In-Clinic & On Farm Services

Recipient Programs



Bova-Tech Ltd.

P.O. Box 80142 Airdrie, Alberta T4B 2V8 Canada

Tel: (403) 332-1567 E-mail: info@bova-tech.com



Bova-Tech Ltd.

B T L

EMBRYOS FOR SALE

WWW.BOVATECH.COM

(403) 332-1567



Torch View 1J AMARILLO

Torch View Amarillo 1J is a special female. Massive and bold in her design, yet refined through her skull and front third. She is destined to make the "cornerstone cow" all day long.



H DEBERARD 7454



H Deberard 7454 ET is a popular National Champion Polled Hereford bull that is siring great calves. Deberard was named grand champion polled Hereford Bull at the National Western Stock Show. He is a son of the popular UPS Sensation 2296 ET and out of RST GAT NST Y79D LADY 54B ET. In addition to winning Denver, Deberard won the Western Nugget National Hereford Show in Reno and was the high selling bull in Hoffman's 2018 bull sale.

Donor Care Facility

Embryo Collection, Freezing & Transplants

IVF - In Vitro Fertilization

Export Certified

In-Clinic & On Farm Services

Recipient Programs



Bova-Tech Ltd.

P.O. Box 80142 Airdrie, Alberta T4B 2V8 Canada

Tel: (403) 332-1567 E-mail: info@bova-tech.com



Bova-Tech Ltd.

B T L

EMBRYOS FOR SALE

WWW.BOVATECH.COM

(403) 332-1567

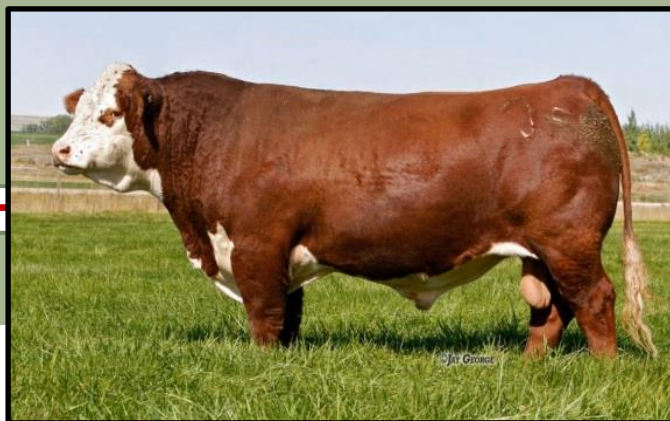


LAMPORT'S 87N

VICTORIA 46T

NJW 73S M326

TRUST 100W ET



Victoria 46T is an ideal made, moderate frame and easy fleshing cow with great feet and disposition. 46T has produced the best 2013 heifer calf of the herd, and she is the kind of female that will produce offspring that never goes out of style and will last in the herd longer than most. Her two daughters in the herd are very attractive with lost of eye appeal and femininity.

Victoria 46T is a very productive and fertile cow that became a front pasture donor with an awesome production.

Trust is exactly that and breeders world wide have trusted this sire to build their herds. A Trait Leader for thirteen EPD traits including all three \$indexes. He makes exceptional replacement females and awesome herd sires alike.

We just can't say enough about this outstanding Hereford bull. He does so many things right for the breed. Proven breed leading genetics with extra style, pigment, shape, eye-appeal and balance. His daughters have done a tremendous job worldwide, and powerful sons are equally in demand. His dam is a beautiful, elite P606 daughter backed by a cow family known for superb udders and the ability to produce at the top every year.

Donor Care Facility

Embryo Collection, Freezing & Transplants

IVF - In Vitro Fertilization

Export Certified

In-Clinic & On Farm Services

Recipient Programs

Bova-Tech Ltd.

P.O. Box 80142 Airdrie, Alberta T4B 2V8 Canada

Tel: (403) 332-1567 E-mail: info@bova-tech.com



WAGYU

EMBRYOS

For Sale





K Kun
 Kuntzide
DAISY F27



☆☆☆
YUM BIG **PRIME**
S154 05H



Kun Kuntzide Daisy F27 has a typical phenotype with tremendous growth and maternal traits.

Double stacked pedigree of World K's Michifuku makes a perfect combination of proven foundation with depth, ribs, shape and square hip, along with lots of femininity and milk.

Daisy has a nicely balanced genomic EBV profile.



Yum Big Prime is free by parentage of all known Wagyu genetic defects. He is ultra-elite in the Australian system for Marble Score EBV and Marble Fineness EBV, elite for F1 Terminal Index and Fullblood Terminal Index and superior for Gestation Length EBV, Birth Weight EBV and Self Replacing Index and better than breed average for Eye Muscle Are EBV and Wagyu Breeder Index. Line bred to the famous foundation Wagyu carcass sire WKS Michifuku from a grandam sired by Itoshigenami, this EBV superstar offers a pedigree that displays 62,6% Tajima; 17% Itozakura; 7.4% Shimane; 2.9% Okayama; .8% Tottori and .4% Kedaka bloodlines.

- Donor Care Facility
- Embryo Collection, Freezing & Transplants
- IVF - In Vitro Fertilization
- Export Certified
- In-Clinic & On Farm Services
- Recipient Programs

