

Bova-Tech Ltd.

B T L



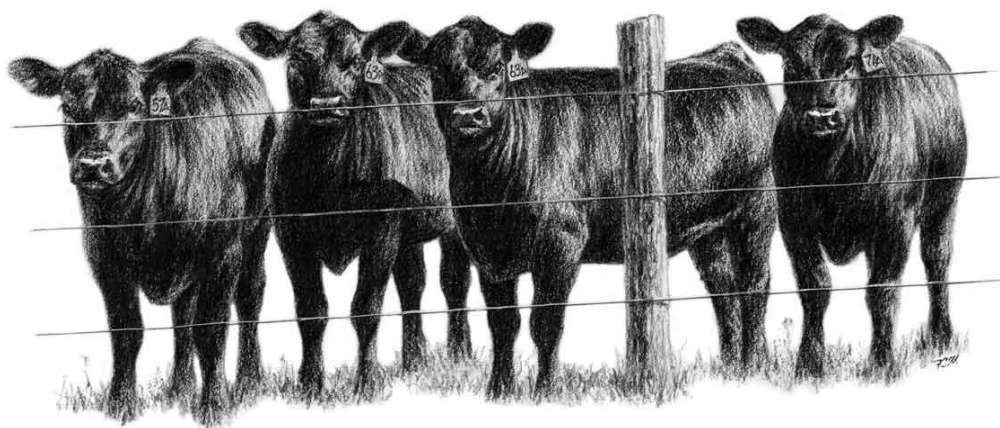
**Red
Angus**

**Black
Angus**

Hereford

Wagyu

2024 CATALOGUE



**Embryo
Transplant
Services**

Embryos for Sale

www.bova-tech.com

**Export
Certified**

P.O. Box 80142 Airdrie, Alberta

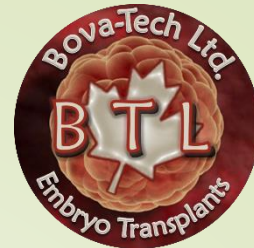
T4B 2V8 Canada

Tel: (403) 332-1567

E-mail: info@bova-tech.com

www.bova-tech.com





CONNEALY
Craftsman

070R



- The single most talked about bull of the Spring 2022 sales season, CRAFTSMAN was the \$500,000 record setting high seller at Connealy's sale!
- CRAFTSMAN posted very impressive performance ratios of 120@WW, 119@YW, 154@IMF and 107@RE in a large contemporary group
- Sired by Sitz Resilient out of an impressive young Niobrara daughter, CRAFTSMAN's physical presence and breed character add to his overall package. He is striking though his front 1/3 and offers great length and shape down his top with combined with excellent structural integrity.
- Highly sought after for his combination of \$M and \$C, along with the parts that compile those indexes. Mating options and directions are endless with CRAFTSMAN!

ACC  **27G**
Queen Ruth

ACC Queen Ruth 27G is a very elegant designed female that is exceptional in her structural design. This female is the type that could be a very versatile breeding piece. We think she could raise some big time show steers or if you wanted to go the maternal route she will work to a lot of today's popular sires.



Donor Care Facility

Embryo Collection, Freezing & Transplants

IVF - In Vitro Fertilization

Export Certified

In-Clinic & On Farm Services

Recipient Programs



Bova-Tech Ltd.

P.O. Box 80142 Airdrie, Alberta T4B 2V8 Canada
Tel: (403) 332-1567 E-mail: info@bova-tech.com



SAV 1335
Magnum



Magnum commanded attention of breeders long before he walked through the sale ring, and is being used by SAV as the next step in their program.

This fresh pedigree blends nine Pathfinders in his three-generation pedigree and offers unique mating flexibility.

His feminine, efficient, 3-year-old dam exudes udder quality and possesses perfect feet.

Expect Magnum to boost performance in a real world, attractive package.

ACC Queen Ruth 27C is a very elegant designed female that is exceptional in her structural design. This female is the type that could be a very versatile breeding piece. We think she could raise some big time show steers or if you wanted to go the maternal route she will work to a lot of today's popular sires.

ACC  27C
Queen Ruth



Donor Care Facility

Embryo Collection, Freezing & Transplants

IVF - In Vitro Fertilization

Export Certified

In-Clinic & On Farm Services

Recipient Programs

Remitall F 148F

MS MORRISON



Ms Morrison 148F is a real wide based, deep bodied female. Sired by Rage 9A who is producing offspring with natural thickness, muscle expression with superb structure. The Rage daughters are prolific producing females that are easy doing, big bodied with beautiful udders.

Ms Morrison 148F stems from a strong producing cow family with fertility and longevity. Her grand dam is designated Elite with CAA and records a lifetime index of 107 on 8 calves. A pedigree stacked with performance sires such as Rito 9969, SAV Prodigy 8101, SAV Net Worth 4200 and Rachis 21R. Ms Morrison 148F has all the qualities to be a cornerstone female.

Basin 1682

PAYWEIGHT



Ranked Number 4 among all Angus sires for progeny registered in the 2018 fiscal year of the American Angus Association after ranking Number 6 in 2017, even though demand has been much larger than the amount of semen available for several years, this high volume, easy fleshing individual is one of the bulls that cattlemen admire at ORigen and one of the highest demand sires in the decade. With more than 30 different sons that topped bull sales across the nation in the spring of 2018, few calving-ease bulls in Angus history have ever offered the extreme body mass and depth of body that is a trademark of Payweight 1682 and his progeny, in combination with elite growth values and a look that appeals to both purebred and commercial cattlemen.

Payweight 1682 daughters in production display his depth of body and ease of fleshing with nice udder structure and a brood cow look and his daughters have topped Angus sales across the continent with his full sister Basin O Lass 1663 setting a Montana Angus record when half interest of her sold for \$210,000 at the NILE Sale in Billings after her first natural son topped the 2014 Midland Test Sale at \$105,000.



Bova-Tech Ltd.

B T L



P.O. Box 80142 Airdrie, Alberta
T4B 2V8 Canada

Embryos for Sale

www.bova-tech.com or (403) 332-1567

Jac's 0247X
Blackcap



Here is a stunning female that is straight on her lines, level hiped with an attractive look. Blackcap 0247X has raised off spring that share her erect front end and superior phenotype. This is one of our absolute favorites cows that came from Gilchrist farms in Ontario.

0247X pedigree is backed up by sires like SAV Final Answer, and N Bar Emulation EXT, she is a direct SAV Pioneer daughter. Her embryo basket feature embryos sired by some of the most popular and heavily use bulls in North America, with balanced EPDs and mind blowing phenotypes.



Musgrave 811
CRACKERJACK



The excitement continues to build around Crackerjack as his first calves hit the ground small, but with superior vigor and growth. They're jet black, stylish and massive just like their sire. Musgrave's identified Crackerjack early as the next step forward in their breeding program for his powerful yet proud look, structure and balanced genetic predictions. His productive dam has power, substance and complimentary femininity, with incredible udder quality and excellent feet. Crackerjack is pleasing many for his exceptional feet, large scrotal development and extra muscle expression. We believe Crackerjack has as much scope and future as any young sire in the A.I. industry.

Donor Care
Facility

Embryo Collection,
Freezing & Transplants

IVF - In Vitro
Fertilization

Export
Certified

In-Clinic & On
Farm Services

Recipient
Programs

Bova-Tech Ltd.

B T L



Embryos for Sale

P.O. Box 80142
Airdrie, Alberta
T4B 2V8 Canada

www.bova-tech.com or (403) 332-1567

Jac's 0247X
Blackcap



Here is a stunning female that is straight on her lines, level hiped with an attractive look. Blackcap 0247X has raised off spring that share her erect front end and superior phenotype. This is one of our absolute favorites cows that came from Gilchrist farms in Ontario.

0247X pedigree is backed up by sires like SAV Final Answer, and N Bar Emulation EXT, she is a direct SAV Pioneer daughter. Her embryo basket feature embryos sired by some of the most popular and heavily use bulls in North America, with balanced EPDs and mind blowing phenotypes.



Brooking 6068
FIREBRAND



Firebrand was the top selling bull at the 2017 Brooking Angus Sale, SK where they proclaimed he's a milestone breeding achievement, blending abundance of thickness, testicle development, muscle and dimension with a unique, clean, erect front third, based on a great set of feet and legs. Fantastic females are included on both sides of the pedigree to bolster Firebrand's appeal as a tremendous breeding piece!

Firebrand is supported by cow family strength on both sides of his pedigree. His sire's dam EA Rose 918 is what an Angus cow should look like. Firebrand's dam, Brooking Annie K 390, is a moderate framed female that is very angular fronted and has a beautiful udder. Firebrand is a sire to tie on to.

Donor Care
Facility

Embryo Collection,
Freezing & Transplants

IVF - In Vitro
Fertilization

Export
Certified

In-Clinic & On
Farm Services

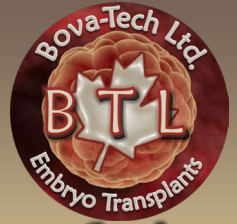
Recipient
Programs

Bova-Tech Ltd.

B T L

P.O. Box 80142 Airdrie, Alberta
T4B 2V8 Canada

www.bova-tech.com or (403) 332-1567



Embryos for Sale

Jac's 0247X
Blackcap



Here is a stunning female that is straight on her lines, level hiped with an attractive look. Blackcap 0247X has raised off spring that share her erect front end and superior phenotype. This is one of our absolute favorites cows that came from Gilchrist farms in Ontario.

0247X pedigree is backed up by sires like SAV Final Answer, and N Bar Emulation EXT, she is a direct SAV Pioneer daughter. Her embryo basket feature embryos sired by some of the most popular and heavily use bulls in North America, with balanced EPDs and mind blowing phenotypes.

SOO LINE 9016
Motive



Motive is impressive in his phenotype and muscle expression and unmatched eye appeal. He has been proven to be a low birth weight, along with a solid EPD profile.

Motive was the top-selling lot in the 2010 Bases Loaded sale where half interest sold for \$ 55,000. Motive was the lead-off bull of the 2010 NWSS Champion Pen of three bulls.

Motive offspring is in a high demand. Reports of progeny sales for, \$83,000, \$60,000, \$44,000, \$34,000, \$25,000, \$23,000, \$22,000, \$19,000, \$19,000, \$16,000, \$15,000 and many other five figures individuals across Canada and the USA.



Donor Care Facility

Embryo Collection, Freezing & Transplants

IVF - In Vitro Fertilization

Export Certified

In-Clinic & On Farm Services

Recipient Programs

Bova-Tech Ltd.

B T L

P.O. Box 80142 Airdrie, Alberta
T4B 2V8 Canada

www.bova-tech.com or (403) 332-1567



Embryos for Sale

Jac's 0247X
Blackcap



Here is a stunning female that is straight on her lines, level hiped with an attractive look. Blackcap 0247X has raised off spring that share her erect front end and superior phenotype. This is one of our absolute favorites cows that came from Gilchrist farms in Ontario.

0247X pedigree is backed up by sires like SAV Final Answer, and N Bar Emulation EXT, she is a direct SAV Pioneer daughter. Her embryo basket feature embryos sired by some of the most popular and heavily use bulls in North America, with balanced EPDs and mind blowing phenotypes.

Colburn 5153
PRIMO



Colburn Primo 5153: Primo is the awesome new sire raised by Colburn Cattle Co, CA. He's a product of one of Style's most decorated daughters and the amazing Dameron First Class!

His maternal granddam is Silveiras famous donor, Saras Dream! Primo's full sister's are some of the most dominating show heifers on the circuit! Trust these genetics to take you to the next level at the show ring with balanced EPDs.



Donor Care
Facility

Embryo Collection,
Freezing & Transplants

IVF - In Vitro
Fertilization

Export
Certified

In-Clinic & On
Farm Services

Recipient
Programs

Bova-Tech Ltd.



Embryos for Sale

www.bova-tech.com

(403) 332-1567

TAR

Donna

614



SAV 004

DENSITY

4336



Straight out of the 2020 Coleman female sale, the beautifully designed Tar Donna 614 is a complete female that keeps producing what we love, offspring with some of the most alluring phenotypes of the breed with a balanced EPD's and low birthweights.

Donna 614 along with her feminine eye appeal, is stout and loaded with rib, an excellent udder and great feet. She is backed up with a SOLID PEDEGREE sired by the Pathfinder bull SAV Resource. Her Dam stems back to Coleman Regis 904 and OCC Juneau 807J. Her 2020 heifer calf sired by the \$450,000 for 1/2 interest Colman Bravo 6313 is an excellent example of proven maternal genetics.

Density 4336 has made his mark as one of the most influential maternal sires in the Angus breed. He is unmatched for his ability to consistently stamp his feminine heavy milking daughters with impeccable udder quality, broodiness, and maternal function. They are moderate framed efficient cows with superior production capabilities.

Density is a cow maker deluxe, his daughters are rising to the top at ranches across Canada and the USA. His sons are in demand due to their depth of body, muscle expression and they are correctly structured. He has been used worldwide on cows of all body types due to his consistent siring pattern.



Bova-Tech Ltd.

P.O. Box 80142 Airdrie, Alberta T4B 2V8 Canada
Tel: (403) 332-1567 E-mail: info@bova-tech.com



Donor Care Facility

Embryo Collection, Freezing & Transplants

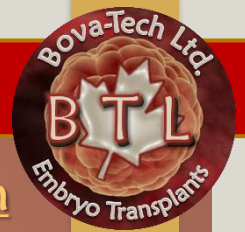
IVF - In Vitro Fertilization

Export Certified

In-Clinic & On Farm Services

Recipient Programs

Bova-Tech Ltd.



Embryos for Sale

www.bova-tech.com

(403) 332-1567

TAR 614
Donna

Sitz 726D
STELLAR



Straight out of the 2020 Coleman female sale, the beautifully designed Tar Donna 614 is a complete female that keeps producing what we love, offspring with some of the most alluring phenotypes of the breed with a balanced EPD's and low birthweights. Along with her feminine eye appeal, she is stout and loaded with rib, an excellent udder and great feet. She is backed up with a **SOLID PEDEGREE** sired by the Pathfinder bull SAV Resource. Her Dam stems back to Coleman Regis 904 and OCC Juneau 807J. Her 2020 heifer calf sired by the \$450,000 for ½ interest Coleman Bravo 6313 is an excellent example of proven maternal genetics.

Sitz Stellar 726D, is one of the most prolific sires in the history of Sitz Angus.

He was the 2017 Sitz Angus Sale Topper. With big time calving ease and performance, combining a 62 pound birth weight with a 900+ pound weaning weight.

Stellar has an outstanding maternal pedigree and design with a breed leading \$Weaning Index. He is a super thick topped and deep sided bull that only improved his powerhouse phenotype while breeding cows as a yearling.



Bova-Tech Ltd.

P.O. Box 80142 Airdrie, Alberta T4B 2V8 Canada
Tel: (403) 332-1567 E-mail: info@bova-tech.com



Donor Care
Facility

Embryo Collection,
Freezing & Transplants

IVF - In Vitro
Fertilization

Export
Certified

In-Clinic & On
Farm Services

Recipient
Programs

Bova-Tech Ltd.

B T L



Embryo
Transplants

www.bova-tech.com

Improving Herd Genetics

Embryos For Sale

www.bova-tech.com

PH: (403) 332-1567

An outstanding and productive female with tremendous eye appeal, balance and quality from the foundation Duchess female in the Pilgrim program. This Pure Product daughter stems back to the featured Summitcrest Mamie Gal family on the bottom side. She had an individual weaning ratio of 109, yearling ratio of 107, progeny production record of BR1@96 and stems from a dam that records WR 6@106, YR 2@113.

BGA PILGRIM Duchess P222



SAV 6846 RAINFALL



Rainfall is a standout from a landmark flush at Schaff's Angus Valley with credentials to write a whole new chapter in Angus history. He combines dominating phenotype, superior confirmation and outlier thickness, muscle shape, capacity and pounds, while blending a fresh pedigree, proven outcross calving ease genetics and the greatest maternal cow in the Angus breed.

He sires added length, soundness and unmistakable herd bull presence in his sons. His daughters are stunning in an elegant maternal package. He sets himself apart with his dominating hip and rear-leg structure with muscle shape and flawless phenotype. A \$ Weaning leader that offers strong MARB and REA predictions in an easy fleshing, big-bodied, good footed design. He brings calving ease, maternal strength and performance together - fundamental elements to build from.

P.O. Box 80142 Airdrie, Alberta T4B 2V8 Canada

Donor Care
Facility

Embryo Collection,
Freezing & Transplant:

IVF - In Vitro
Fertilization

Export
Certified

In-Clinic & On
Farm Services

Recipient
Programs



Bova-Tech Ltd.

B T L



Embryo
Transplants

www.bova-tech.com

Improving Herd Genetics

Embryos For Sale

www.bova-tech.com

PH: (403) 332-1567

BGA

PILGRIM



Duchess P222

An outstanding and productive female with tremendous eye appeal, balance and quality from the foundation Duchess female in the Pilgrim program. This Pure Product daughter stems back to the featured Summitcrest Mamie Gal family on the bottom side. She had an individual weaning ratio of 109, yearling ratio of 107, progeny production record of BR1@96 and stems from a dam that records WR 6@106, YR 2@113.



Ellingson  **8062**
THREE RIVERS



Three Rivers was the Ellingson Angus lead-off bull in 2019 and he continues to hold many performance records, including the breed's no. 1 spot for weaning and yearling performance. He sires big bodied, stout made, high performing cattle. His first sons were a highlight of the 2021 Ellingson Angus Sale. He displays tremendous power and mass packed into a bold-middled, sharp fronted package. Combines phenotypic prominence, outstanding performance and maternal heritage into one package.

P.O. Box 80142 Airdrie, Alberta T4B 2V8 Canada

Donor Care
Facility

Embryo Collection,
Freezing & Transplant:

IVF - In Vitro
Fertilization

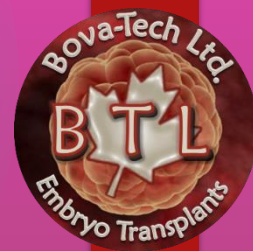
Export
Certified

In-Clinic & On
Farm Services

Recipient
Programs



Bova-Tech Ltd. Female Sexed IVF
B T L Embryos for Sale
www.bova-tech.com
 (403) 332-1567



Coleman 2302
DONNA



SAV 1441
Resource



Donna 2302 blends the calving-easy and the \$w sire, with a big epd for milk. Donna is high quality phenotype female with a long and deep body with a perfect udder. The donna cow family is synonymous of raising top producing individuals at coleman angus meeting all expectations with a maternal masterpiece combination, and donna 2301 is living up to her heritage.

Donna 2302 carries a br 2@92, a wr 2@104 and a yr 1@100. Her dam records a br 3@98, a wr 3@109 and a yr 3@106 while two daughters maintain a combined wr 3@105. Donna is consistent on her production bringing to any program easy fleshing, milk and excellent udder and overall correct conformation. Her 2016 natural calf is an outstanding heifer sired by resource weighed 731 lbs. At 7.5 mo. Of age.



Top 1% of the breed for: Weaning Weight, Yearling Weight, Total Maternal, REA and Carcass Weight Top 2% for Scrotal circumference Resource is one of the most iconic bulls in the breed; Resource is the most popular sire in the Genex lineup due to his ability to sire growth, carcass merit and maternal ability in a desirable package.

Resource brings to the table the basics of efficiency and natural fleshing ability, with thickness, muscle, masculinity, superb structure, feet quality and authentic breed character. Resource sons have unprecedented performance and industry appeal, while his daughters are making superb brood cows with high quality udders and abundant milk.

Donor Care Facility

Embryo Collection, Freezing & Transplants

IVF - In Vitro Fertilization

Export Certified

In-Clinic & On Farm Services

Recipient Programs

Bova-Tech Ltd.

P.O. Box 80142 Airdrie, Alberta T4B 2V8 Canada
Tel: (403) 332-1567 E-mail: info@bova-tech.com



Bova-Tech Ltd.
B T L 
 www.bova-tech.com Embryo Transplants
 Improving Herd Genetics

Embryos For Sale

www.bova-tech.com

PH: (403) 332-1567



P417

PILGRIM

Dixie Erica

A daughter of the \$67,500 ABS Global AI sire, SAV Brilliance 8077, back to a daughter of BC Classic 385-7 and the Erica family. This female has been a tremendous producer with loads of body in a beautiful package with a big, stout, square hip and impressive muscle. She is an easy-fleshing female that has a beautiful udder and has done an excellent job in the program.

Merit  1054J
INVESTMENT

Merit Investment 1054J was the high selling bull at the Merit Bull Sale for \$85,000 in a hotly contested battle. His dam has done so much for the industry already with many top sellers for many folks.



P.O. Box 80142 Airdrie, Alberta T4B 2V8 Canada

Donor Care Facility

Embryo Collection, Freezing & Transplant:

IVF - In Vitro Fertilization

Export Certified

In-Clinic & On Farm Services

Recipient Programs

Bova-Tech Ltd.

B T L



Embryo
Transplants

www.bova-tech.com

Improving Herd Genetics

Embryos For Sale

www.bova-tech.com

PH: (403) 332-1567



P417

PILGRIM

Dixie Erica

A daughter of the \$67,500 ABS Global AI sire, SAV Brilliance 8077, back to a daughter of BC Classic 385-7 and the Erica family. This female has been a tremendous producer with loads of body in a beautiful package with a big, stout, square hip and impressive muscle. She is an easy-fleshing female that has a beautiful udder and has done an excellent job in the program.



HILL VALLEY RECKONING 931



Reckoning was the reigning Intermediate Angus Champion at both the 2021 OKC Cattlemen's Congress & 2020 NAILE! His dam was an extremely successful multiple-time champion at all levels and is now producing breed changers. Reckoning is extremely up-headed & clean fronted with cool neck extension! He possesses ultra-flexible joints with desirable body depth, dimension and muscle shape. Hair quality is a BONUS too. His sire, Believe, is one of Canada's highly valuable sires of recent times.

Reckoning is not only a bull to improve show quality, but is a great choice to improve herds of all types with his tremendous breed character, testicle shape, joint & foot quality, and overall excellent phenotype!



P.O. Box 80142 Airdrie, Alberta T4B 2V8 Canada

Donor Care
Facility

Embryo Collection,
Freezing & Transplant:

IVF - In Vitro
Fertilization

Export
Certified

In-Clinic & On
Farm Services

Recipient
Programs

Bova-Tech Ltd.



B T L

Embryos for Sale

www.bova-tech.com or (403) 332-1567

Whitestone

5105

BLUE RIBBON



A high numbered daughter of Basin Excitement and featured Blue Ribbon family from the Whitestone program. This female excels from an EPD standpoint coupled with outstanding performance and phenotype. She is a three generation AI female with big numbers.

She had an individual weaning ratio of 114, a yearling ratio of 113 and an EPD value of +164.74 for dollar beef. She stems from a dam that records WR 2@111, YR 2@115, %IMF2@ 113, UREA 2@105 with one daughter in production with an average nursing ratio of 103. Her 2018 bull calf has been retained in the Whitestone program.

Brooking

6068

FIREBRAND



Firebrand was the top selling bull at the 2017 Brooking Angus Sale, SK where they proclaimed he's a milestone breeding achievement, blending abundance of thickness, testicle development, muscle and dimension with a unique, clean, erect front third, based on a great set of feet and legs. Fantastic females are included on both sides of the pedigree to bolster Firebrand's appeal as a tremendous breeding piece!

Firebrand is supported by cow family strength on both sides of his pedigree. His sire's dam EA Rose 918 is what an Angus cow should look like. Firebrand's dam, Brooking Annie K 390, is a moderate framed female that is very angular fronted and has a beautiful udder.

Firebrand is a sire to tie on to.

Bova-Tech Ltd.

P.O. Box 80142 Airdrie, Alberta T4B 2V8 Canada

Tel: (403) 332-1567 E-mail: info@bova-tech.com



Donor Care Facility

Embryo Collection, Freezing & Transplants

IVF - In Vitro Fertilization

Export Certified

In-Clinic & On Farm Services

Recipient Programs

Bova-Tech Ltd.

B T L



Embryo
Transplants

www.bova-tech.com

Improving Herd Genetics

IVF Embryos

www.bova-tech.com

PH: (403) 332-1567

A high numbered daughter of Basin Excitement and featured Blue Ribbon family from the Whitestone program. This female excels from an EPD standpoint coupled with outstanding performance and phenotype. She is a three generation AI female with big numbers. She had an individual weaning ratio of 114, a yearling ratio of 113 and an EPD value of +164.74 for dollar beef. She stems from a dam that records WR 2@111, YR 2@115, %IMF2@113, UREA 2@105 with one daughter in production with an average nursing ratio of 103. Her 2018 bull calf has been retained in the Whitestone program.

Whitestone BLUE RIBBON 5105



PossMaverick



Poss Maverick is one of the most popular Angus sires all across the globe. The Maverick progeny have surpassed expectations in terms of elite phenotype and carrying on his incredible EPD profile. Bold outlined and imposing 3 dimensional body composition rarely found in such a high marbling sire. The ability of backing up the genomic power with scale crushing data is what makes Maverick so unique. Maverick's elite combination of \$B, Marb, and phenotype make him a must use sire. He is the #1 \$B son of Basin Payweight 1682 and his first progeny are excelling in genomic scores and topping sales.



P.O. Box 80142 Airdrie, Alberta T4B 2V8 Canada

**Donor Care
Facility**

**Embryo Collection,
Freezing & Transplants**

**IVF - In Vitro
Fertilization**

**Export
Certified**

**In-Clinic & On
Farm Services**

**Recipient
Programs**

Bova-Tech Ltd.



B T L

Embryos for Sale

www.bova-tech.com or (403) 332-1567

Whitestone

5105

BLUE RIBBON



A high numbered daughter of Basin Excitement and featured Blue Ribbon family from the Whitestone program. This female excels from an EPD standpoint coupled with outstanding performance and phenotype. She is a three generation AI female with big numbers.

She had an individual weaning ratio of 114, a yearling ratio of 113 and an EPD value of +164.74 for dollar beef. She stems from a dam that records WR 2@111, YR 2@115, %IMF2@ 113, UREA 2@105 with one daughter in production with an average nursing ratio of 103. Her 2018 bull calf has been retained in the Whitestone program.

Brooking

6068

FIREBRAND



Firebrand was the top selling bull at the 2017 Brooking Angus Sale, SK where they proclaimed he's a milestone breeding achievement, blending abundance of thickness, testicle development, muscle and dimension with a unique, clean, erect front third, based on a great set of feet and legs. Fantastic females are included on both sides of the pedigree to bolster Firebrand's appeal as a tremendous breeding piece!

Firebrand is supported by cow family strength on both sides of his pedigree. His sire's dam EA Rose 918 is what an Angus cow should look like. Firebrand's dam, Brooking Annie K 390, is a moderate framed female that is very angular fronted and has a beautiful udder. Firebrand is a sire to tie on to.

Bova-Tech Ltd.

P.O. Box 80142 Airdrie, Alberta T4B 2V8 Canada
Tel: (403) 332-1567 E-mail: info@bova-tech.com



Donor Care Facility

Embryo Collection, Freezing & Transplants

IVF - In Vitro Fertilization

Export Certified

In-Clinic & On Farm Services

Recipient Programs

Bova-Tech Ltd.

B T L



www.bova-tech.com

Embryo
Transplants

Improving Herd Genetics

IVF Embryos

www.bova-tech.com

PH: (403) 332-1567

A high numbered daughter of Basin Excitement and featured Blue Ribbon family from the Whitestone program. This female excels from an EPD standpoint coupled with outstanding performance and phenotype. She is a three generation AI female with big numbers. She had an individual weaning ratio of 114, a yearling ratio of 113 and an EPD value of +164.74 for dollar beef. She stems from a dam that records WR 2@111, YR 2@115, %IMF2@113, UREA 2@105 with one daughter in production with an average nursing ratio of 103. Her 2018 bull calf has been retained in the Whitestone program.

Whitestone BLUE RIBBON 5105



PossMaverick



Poss Maverick is one of the most popular Angus sires all across the globe. The Maverick progeny have surpassed expectations in terms of elite phenotype and carrying on his incredible EPD profile. Bold outlined and imposing 3 dimensional body composition rarely found in such a high marbling sire. The ability of backing up the genomic power with scale crushing data is what makes Maverick so unique. Maverick's elite combination of \$B, Marb, and phenotype make him a must use sire. He is the #1 \$B son of Basin Payweight 1682 and his first progeny are excelling in genomic scores and topping sales.



P.O. Box 80142 Airdrie, Alberta T4B 2V8 Canada

Donor Care
Facility

Embryo Collection,
Freezing & Transplants

IVF - In Vitro
Fertilization

Export
Certified

In-Clinic & On
Farm Services

Recipient
Programs

Bova-Tech Ltd.

B T L



www.bova-tech.com

Embryo
Transplants

Improving Herd Genetics

Embryos For Sale

www.bova-tech.com

PH: (403) 332-1567

Coleman Donna 6243D is a direct daughter of one of the most productive donor cows at Bova-Tech (BTL). Her dam Coleman Donna 2302Z has sold embryos across Canada and other countries producing outstanding offspring with the different sires used.

6243D is a carbon copy of her dam and direct daughter of SAV Resource 1441. She carries an amazing deep body with a great rib and overall thicknesses. A cow of a gentle disposition, amazing feet and udder structure with balanced EPDs. 6243D is an easy fleshing cow that maintains high body condition scores through out the year, even milking and raising a calf in pasture conditions.

Coleman
DONNA
6243D



Brooking 6068

FIREBRAND



Firebrand was the top selling bull at the 2017 Brooking Angus Sale, SK where they proclaimed he's a milestone breeding achievement, blending abundance of thickness, testicle development, muscle and dimension with a unique, clean, erect front third, based on a great set of feet and legs. Fantastic females are included on both sides of the pedigree to bolster Firebrand's appeal as a tremendous breeding piece!

Firebrand is supported by cow family strength on both sides of his pedigree. His sire's dam EA Rose 918 is what an Angus cow should look like. Firebrand's dam, Brooking Annie K 390, is a moderate framed female that is very angular fronted and has a beautiful udder. Firebrand is a sire to tie on to.



P.O. Box 80142 Airdrie,
Alberta T4B 2V8 Canada

Donor Care
Facility

Embryo Collection,
Freezing & Transplants

IVF - In Vitro
Fertilization

Export
Certified

In-Clinic & On
Farm Services

Recipient
Programs

Bova-Tech Ltd.

B T L



Embryo
Transplants

www.bova-tech.com

Improving Herd Genetics

IVF Embryos

www.bova-tech.com

PH: (403) 332-1567

Coleman Donna 6243D is a direct daughter of one of the most productive donor cows at Bova-Tech (BTL). Her dam Coleman Donna 2302Z has sold embryos across Canada and other countries producing outstanding offspring with the different sires used. 6243D is a carbon copy of her dam and direct daughter of SAV Resource 1441. She carries an amazing deep body with a great rib and overall thicknesses. A cow of a gentle disposition, amazing feet and udder structure with balanced EPDs. 6243D is an easy fleshing cow that maintains high body condition scores through out the year, even milking and raising a calf in pasture conditions.

Coleman
DONNA
6243D



Poss **Maverick**



Poss Maverick is one of the most popular Angus sires all across the globe. The Maverick progeny have surpassed expectations in terms of elite phenotype and carrying on his incredible EPD profile. Bold outlined and imposing 3 dimensional body composition rarely found in such a high marbling sire. The ability of backing up the genomic power with scale crushing data is what makes Maverick so unique. Maverick's elite combination of \$B, Marb, and phenotype make him a must use sire. He is the #1 \$B son of Basin Payweight 1682 and his first progeny are excelling in genomic scores and topping sales.



**P.O. Box 80142 Airdrie,
Alberta T4B 2V8 Canada**

Donor Care
Facility

Embryo Collection,
Freezing & Transplants

IVF - In Vitro
Fertilization

Export
Certified

In-Clinic & On
Farm Services

Recipient
Programs

Bova-Tech Ltd.

B T L



EMBRYOS FOR SALE

WWW.BOVA-TECH.COM

(403) 332-1567

Montana
BLACKCAP
7053

CONNEALY
Craftsman
070R



Montana Blackcap 7053 maintains a calving interval of 4@368 and earned a progeny record of BR 3@100; WR 3@109 and 3@107, which gains her a place in the top 5% of the breed for BW and MB; the top 10% for CED and the top 15% for \$W.

Blackcap blends stunning good looks with mass and performance. She is a deep-sided, easy-fleshing and superbly uddered female.

The single most talked about bull of the Spring 2022 sales season, CRAFTSMAN was the \$500,000 record setting high seller at Connealy's sale! CRAFTSMAN posted very impressive performance ratios of 120@WW, 119@YW, 154@IMF and 107@RE in a large contemporary group. Sired by Sitz Resilient out of an impressive young Niobrara daughter,

CRAFTSMAN's physical presence and breed character add to his overall package. He is striking though his front 1/3 and offers great length and shape down his top with combined with excellent structural integrity. Highly sought after for his combination of \$M and \$C, along with the parts that compile those indexes. Mating options and directions are endless with CRAFTSMAN!

Donor Care Facility Embryo Collection, Freezing & Transplants IVF - In Vitro Fertilization Export Certified In-Clinic & On Farm Services Recipient Programs

Bova-Tech Ltd.

**P.O. Box 80142 Airdrie, Alberta T4B 2V8 Canada
Tel: (403) 332-1567 E-mail: info@bova-tech.com**



Bova-Tech Ltd.

B T L



EMBRYOS FOR SALE

WWW.BOVA-TECH.COM

(403) 332-1567

Montana
BLACKCAP
7053

SAV 1335
Magnum



Montana Blackcap 7053 maintains a calving interval of 4@368 and earned a progeny record of BR 3@100; WR 3@109 and 3@107, which gains her a place in the top 5% of the breed for BW and MB; the top 10% for CED and the top 15% for \$W.

Blackcap blends stunning good looks with mass and performance. She is a deep-sided, easy-fleshing and superbly uddered female.

Magnum commanded attention of breeders long before he walked through the sale ring, and is being used by SAV as the next step in their program.

This fresh pedigree blends nine Pathfinders in his three-generation pedigree and offers unique mating flexibility.

His feminine, efficient, 3-year-old dam exudes udder quality and possesses perfect feet.

Expect Magnum to boost performance in a real world, attractive package.

Donor Care Facility Embryo Collection, Freezing & Transplants IVF - In Vitro Fertilization Export Certified In-Clinic & On Farm Services Recipient Programs



Bova-Tech Ltd.

P.O. Box 80142 Airdrie, Alberta T4B 2V8 Canada
Tel: (403) 332-1567 E-mail: info@bova-tech.com



Bova-Tech Ltd.

B T L



EMBRYOS FOR SALE

WWW.BOVA-TECH.COM

(403) 332-1567

Montana
BLACKCAP
7053

Coleman 708
RESOURCE



Montana Blackcap 7053 maintains a calving interval of 4@368 and earned a progeny record of BR 3@100; WR 3@109 and 3@107, which gains her a place in the top 5% of the breed for BW and MB; the top 10% for CED and the top 15% for \$W.

Blackcap blends stunning good looks with mass and performance. She is a deep-sided, easy-fleshing and superbly uddered female.

Coleman Resource 708 is a true "Cattleman's Kind" of Angus bull. He is loaded with muscle, and dimension, along with tremendous body, and perfect feet, and comes at you in an eye appealing package. Coleman Resource 708 has done it the old fashion way, in the breeding pasture. His daughters have beautiful udders, perfect feet, and wean off heavy calves.

He is by the Pathfinder Sire who has carried on the Rito lineage and back to a daughter of Coleman Manning 0299 and back to the \$93,000 valued past top-selling Coleman Donna 005. He is a great grandson of the \$200,000 valued Coleman Donna 386.

Donor Care Facility Embryo Collection, Freezing & Transplants IVF - In Vitro Fertilization Export Certified In-Clinic & On Farm Services Recipient Programs



Bova-Tech Ltd.

**P.O. Box 80142 Airdrie, Alberta T4B 2V8 Canada
Tel: (403) 332-1567 E-mail: info@bova-tech.com**



Bova-Tech Ltd.

B T L



EMBRYOS FOR SALE

WWW.BOVA-TECH.COM

(403) 332-1567



Montana 1038

JUDGEMENT



A big-ribbed and stoutly-constructed 3rd generation donor in the program. Descending from a dam with progeny ratios of BR 6@92; WR 6@106 and YR 5@103 and a grandam showing a progeny record of BR 5@99; WR 5@102; YR 5@102; IMF 72@102; RE 72@100, Rita 7204 posts a progeny record of BR 3@100; WR 3@100; YR 3@100 and IMF 5@113 with a calving interval of 4@361.

Montana Just In Time 1080, her son, is a herd sire prospect, while another son, Guideline 9304, was the lead-off War Party 1472 son selected by Gilliland Livestock of CA in the 2020 sale.



Evaluated by many astute cowmen as one of the most complete, fault-free bulls the breed has ever produced, Judgement was selected by a diverse and visionary set of breeders as the \$180,000 record-selling bull of the 2022 Montana Maternal Revival Sale. A revolutionary sire for type, maternal excellence, feed efficiency, fertility and cow longevity – the real-world profit drivers for ranchers, Judgement excels for growth relative to mature size, and gain relative to consumption.

Dominant in his muscle shape, with a huge top and expressive quarter, combined with a chiseled stifle, Judgement exhibited early sexual maturity with a beautiful crest, robust scrotal and a slick, shiny haircoat. A three-dimensional stud whose massive volume, base width and length sets a new standard, Judgement is ideal in his hoof design and travels with a long, effortless stride.

Donor Care Facility

Embryo Collection, Freezing & Transplants

IVF - In Vitro Fertilization

Export Certified

In-Clinic & On Farm Services

Recipient Programs



Bova-Tech Ltd.

P.O. Box 80142 Airdrie, Alberta T4B 2V8 Canada

Tel: (403) 332-1567 E-mail: info@bova-tech.com



Bova-Tech Ltd.

B T L



Embryos for Sale

www.bova-tech.com

(403) 332-1567

Donor Care Facility

Embryo Collection, Freezing & Transplants

IVF - In Vitro Fertilization

Export Certified

In-Clinic & On Farm Services

Recipient Programs

Wiwa Creek
TILDA 530'15



Barstow
CASH ^{18y}



Wiwa Creek Tilda 530'15 is a low maintenance female that displays tonnes of body capacity in a very complete and attractive package.

Tilda 530'15 is full of maternal greatness throughout her pedigree and is a no miss production female. Her sire, Lead Change was a past Agribition Division Champion and has left his mark siring highly sought after sons and daughters.

Look to Tilda 530'15 to be a hard-working female, high production brood cow that will give fast ROI.

Cash took the 2012 spring bull sale season by storm when he sold 1/3 interest for \$108,000.00, making him the highest selling bull ever produced in the productive Barstow Angus program. Produced by a beautiful first calf heifer who weaned him at 113 ratio. Cash went on to earn a yearling ratio of 112 and scan with an adj. RE of 18.0 sq. in.

Cash is an exciting new calving ease sire that possesses a flawless genetic tabulation with a 64 lb. actual birth weight and strong growth, carcass, and \$B values. Cash is a sensibly-sized bull that is massive in his design with incredible body volume and shape, thickness, and muscle mass throughout. TOP 1% of the Breed for WW, YW and SC.



Bova-Tech Ltd.

**P.O. Box 80142 Airdrie, Alberta
T4B 2V8 Canada**

Tel: (403) 332-1567 E-mail: info@bova-tech.com



Bova-Tech Ltd.

B T L



Embryos for Sale

www.bova-tech.com

(403) 332-1567

Donor Care Facility

Embryo Collection, Freezing & Transplants

IVF - In Vitro Fertilization

Export Certified

In-Clinic & On Farm Services

Recipient Programs

Wiwa Creek

TILDA 530'15

Basin

1682

PAYWEIGHT



Wiwa Creek Tilda 530'15 is a low maintenance female that displays tonnes of body capacity in a very complete and attractive package.

Tilda 530'15 is full of maternal greatness throughout her pedigree and is a no miss production female. Her sire, Lead Change was a past Agribition Division Champion and has left his mark siring highly sought after sons and daughters.

Look to Tilda 530'15 to be a hard-working female, high production brood cow that will give fast ROI.

Ranked Number 4 among all Angus sires for progeny registered in the 2018 fiscal year of the American Angus Association after ranking Number 6 in 2017, even though demand has been much larger than the amount of semen available for several years, this high volume, easy fleshing individual is one of the bulls that cattlemen admire at ORigen and one of the highest demand sires in the decade. With more than 30 different sons that topped bull sales across the nation in the spring of 2018, few calving-ease bulls in Angus history have ever offered the extreme body mass and depth of body that is a trademark of Payweight 1682 and his progeny, in combination with elite growth values and a look that appeals to both purebred and commercial cattlemen.

Payweight 1682 daughters in production display his depth of body and ease of fleshing with nice udder structure and a brood cow look. His daughters have topped Angus sales across the continent with his full sister Basin O Lass 1663 setting a Montana Angus record when half interest of her sold for \$210,000 at the NILE Sale in Billings after her first natural son topped the 2014 Midland Test Sale at \$105,000.



Bova-Tech Ltd.

P.O. Box 80142 Airdrie, Alberta
T4B 2V8 Canada

Tel: (403) 332-1567 E-mail: info@bova-tech.com



Donor Care
Facility

Embryo Collection,
Freezing & Transplants

IVF - In Vitro
Fertilization

Export
Certified

In-Clinic & On
Farm Services

Recipient
Programs

Wiwa Creek

TILDA 530'15



Wiwa Creek Tilda 530'15 is a low maintenance female that displays tonnes of body capacity in a very complete and attractive package.

Tilda 530'15 is full of maternal greatness throughout her pedigree and is a no miss production female. Her sire, Lead Change was a past Agribition Division Champion and has left his mark siring highly sought after sons and daughters.

Look to Tilda 530'15 to be a hard-working female, high production brood cow that will give fast ROI.

Colburn 5153

PRIMO



Colburn Primo 5153 is the awesome new sire raised by Colburn Cattle Co, CA. He's a product of one of Style's most decorated daughters and the amazing Dameron First Class!

His maternal granddam is Silveiras famous donor, Saras Dream! Primo's full sister's are some of the most dominating show heifers on the circuit!

Trust these genetics to take you to the next level at the show ring with balanced EPDs.

Bova-Tech Ltd.

B T L



EMBRYOS FOR SALE

WWW.BOVA-TECH.COM

(403) 332-1567

Maya 247D
BLACKCAP

Marda 683
BLACKSMITH



Maya Blackcap 247D is a deep bodied, wide ribbed female, with a nice solid frame.

Beautifully balanced with loads of thickness and muscle shape.

Blackcap 247D stands on an ideal set of feet and legs and has the depth and capacity to produce.

She is consistent on her production bringing to any program easy fleshing, milk and excellent udder and overall correct conformation.

Blackcap 247D puts everything together in such a complete package.

Deep in his rib cage and thick across his rump, this eye appealing son of a past Connealy, top-selling yearling had a birth weight of 70 pounds and an adjusted 205 day weight of 986 pounds for a weaning ratio of 125 as highest weaning weight bull in his ET contemporary group and he scanned an adjusted URE measure of 17.1 square inches.

With an exceptional genomic profile that adds accuracy and predictability to his exceptional genomic-enhanced EPD profile, his dam who has an average progeny %IMF ratio of 9 at 102 and an average progeny URE ratio of 9 at 105, was produced by a full sister to the \$110,000 S A V Resource 1441 and his third dam is the all-time highest income producing donor in the S A V program and among the top of the entire Angus breed.

Donor Care Facility

Embryo Collection, Freezing & Transplants

IVF - In Vitro Fertilization

Export Certified

In-Clinic & On Farm Services

Recipient Programs



Bova-Tech Ltd.

P.O. Box 80142 Airdrie, Alberta T4B 2V8 Canada

Tel: (403) 332-1567 E-mail: info@bova-tech.com



Bova-Tech Ltd.

B T L



Embryos for Sale

www.bova-tech.com

(403) 332-1567

Donor Care Facility

Embryo Collection, Freezing & Transplants

IVF - In Vitro Fertilization

Export Certified

In-Clinic & On Farm Services

Recipient Programs

Maya 247D
BLACKCAP

SAV 0035
Final Answer



Maya Blackcap 247D is a deep bodied, wide ribbed female, with a nice solid frame. Beautifully balanced with loads of thickness and muscle shape. She stands on an ideal set of feet and legs and has the depth and capacity to produce.

Consistent on her production, bringing to any program easy fleshing, milk and excellent udder and overall correct conformation. Blackcap 247D puts everything together in such a complete package.

SAV Final Answer 0035 produces moderate, efficient replacement females. Over 100 Split Diamond calves have been sired by Final Answer.

Produced some top selling sons in Split Diamond bull sales: SD Final Answer 3073 sold for \$10,500 in 2014. SD Final Answer 3004 sold for \$10,250 in 2014. SD Final Answer 3072 sold for \$8,500 in 2014.

Coleman Donna
2302 Daughter



Bova-Tech Ltd.

P.O. Box 80142 Airdrie, Alberta

T4B 2V8 Canada

Tel: (403) 332-1567

E-mail: info@bova-tech.com



Bova-Tech Ltd.

B T L



Embryos for Sale

www.bova-tech.com

(403) 332-1567

Donor Care
Facility

Embryo Collection,
Freezing & Transplants

IVF - In Vitro
Fertilization

Export
Certified

In-Clinic & On
Farm Services

Recipient
Programs

Maya 247D
BLACKCAP

Brooking 6068
FIREBRAND



Maya Blackcap 247D is a deep bodied, wide ribbed female, with a nice solid frame. Beautifully balanced with loads of thickness and muscle shape.

Blackcap 247D stands on an ideal set of feet and legs and has the depth and capacity to produce.

She is consistent on her production bringing to any program easy fleshing, milk and excellent udder and overall correct conformation.

Blackcap 247D puts everything together in such a complete package.

Firebrand was the top selling bull at the 2017 Brooking Angus Sale, SK where they proclaimed he's a milestone breeding achievement, blending abundance of thickness, testicle development, muscle and dimension with a unique, clean, erect front third, based on a great set of feet and legs. Fantastic females are included on both sides of the pedigree to bolster Firebrand's appeal as a tremendous breeding piece!

Firebrand is supported by cow family strength on both sides of his pedigree. His sire's dam EA Rose 918 is what an Angus cow should look like.

Firebrand's dam, Brooking Annie K 390, is a moderate framed female that is very angular fronted and has a beautiful udder. Firebrand is a sire to tie on to.

Bova-Tech Ltd.

P.O. Box 80142 Airdrie, Alberta
T4B 2V8 Canada

Tel: (403) 332-1567 E-mail: info@bova-tech.com



Bova-Tech Ltd.

B T L



Embryos for Sale

www.bova-tech.com

(403) 332-1567

Donor Care Facility

Embryo Collection, Freezing & Transplants

IVF - In Vitro Fertilization

Export Certified

In-Clinic & On Farm Services

Recipient Programs

Maya 247D
BLACKCAP

Basin 1682
PAYWEIGHT



Maya Blackcap 247D is a deep bodied, wide ribbed female, with a nice solid frame. Beautifully balanced with loads of thickness and muscle shape.

Blackcap 247D stands on an ideal set of feet and legs and has the depth and capacity to produce.

She is consistent on her production bringing to any program easy fleshing, milk and excellent udder and overall correct conformation.

Blackcap 247D puts everything together in such a complete package.

Ranked Number 4 among all Angus sires for progeny registered in the 2018 fiscal year of the American Angus Association after ranking Number 6 in 2017, even though demand has been much larger than the amount of semen available for several years, this high volume, easy fleshing individual is one of the bulls that cattlemen admire at ORigen and one of the highest demand sires in the decade. With more than 30 different sons that topped bull sales across the nation in the spring of 2018, few calving-ease bulls in Angus history have ever offered the extreme body mass and depth of body that is a trademark of Payweight 1682 and his progeny, in combination with elite growth values and a look that appeals to both purebred and commercial cattlemen.

Payweight 1682 daughters in production display his depth of body and ease of fleshing with nice udder structure and a brood cow look and his daughters have topped Angus sales across the continent with his full sister Basin O Lass 1663 setting a Montana Angus record when half interest of her sold for \$210,000 at the NILE Sale in Billings after her first natural son topped the 2014 Midland Test Sale at \$105,000.

EPDs Fall 2018:

Top 1% for \$Weaned calf value index Better than breed average for Scrotal Circumference EPD, Docility score EPD, Calving Ease Maternal EPD, maternal Milk EPD, reducing Mature Weight EPD, Calving Ease Direct EPD and Birth Weight EPD Phenotype data includes weaning records from 831 daughters in 220 herds, 44 progeny harvested in 23 groups and 4,380 progeny scanned in 1,507 groups



Bova-Tech Ltd.

P.O. Box 80142 Airdrie, Alberta
T4B 2V8 Canada

Tel: (403) 332-1567 E-mail: info@bova-tech.com



Bova-Tech Ltd.

B T L



EMBRYOS FOR SALE

WWW.BOVA-TECH.COM

(403) 332-1567

Maya 247D
BLACKCAP



Maya Blackcap 247D is a deep bodied, wide ribbed female, with a nice solid frame. Beautifully balanced with loads of thickness and muscle shape.

Blackcap 247D stands on an ideal set of feet and legs and has the depth and capacity to produce.

She is consistent on her production bringing to any program easy fleshing, milk and excellent udder and overall correct conformation. Blackcap 247D puts everything together in such a complete package.

SAV 6847
President



SAV President 6847 was the world record and top-selling bull of the 2017 SAV sale at \$750,000 with a total valuation of \$938,500.

Incredible in his structure and powerful in his design, we believe President is the best Charlo son out of the No. 1 income producing cow in SAV history, SAV Blackcap May 4136.

To date, she has produced over \$10 million dollars in progeny sales. Thick and efficient, he is the future of performance Angus genetics.

Donor Care Facility

Embryo Collection, Freezing & Transplants

IVF - In Vitro Fertilization

Export Certified

In-Clinic & On Farm Services

Recipient Programs



Bova-Tech Ltd.

P.O. Box 80142 Airdrie, Alberta T4B 2V8 Canada

Tel: (403) 332-1567 E-mail: info@bova-tech.com



Bova-Tech Ltd.

B T L



Embryos for Sale

www.bova-tech.com

(403) 332-1567

Donor Care Facility

Embryo Collection, Freezing & Transplants

IVF - In Vitro Fertilization

Export Certified

In-Clinic & On Farm Services

Recipient Programs

Maya Blackcap 247D is a deep bodied, wide ribbed female, with a nice solid frame. Beautifully balanced with loads of thickness and muscle shape. She stands on an ideal set of feet and legs and has the depth and capacity to produce. Consistent on her production, bringing to any program easy fleshing, milk and excellent udder and overall correct conformation. Blackcap 247D puts everything together in such a complete package.

Maya 247D
BLACKCAP



Duff 19115
REAL DEAL



Duff Real Deal was the top selling bull through the 2021 Power Plus Bull Sale, ranked top 1% for DMI and \$EN, along with an extra shot of power and style, with real maternal built in genetically. Perfectly emulates his name, he is a striking individual with abundant muscle, rib shape, and eye appeal all his own.

Real Deal's dam, Duff 3570, is out of the well-known female sire GCC Total Recall 806T. 3570 is ultra-feminine, eye appealing, fertile, and productive.



P.O. Box 80142 Airdrie, Alberta T4B 2V8 Canada
Tel: (403) 332-1567 E-mail: info@bova-tech.com



Bova-Tech Ltd.

B T L



Embryos for Sale

www.bova-tech.com

(403) 332-1567

Donor Care
Facility

Embryo Collection,
Freezing & Transplants

IVF - In Vitro
Fertilization

Export
Certified

In-Clinic & On
Farm Services

Recipient
Programs

Maya 247D
BLACKCAP

HILL VALLEY
RECKONING
931



Maya Blackcap 247D is a deep bodied, wide ribbed female, with a nice solid frame. Beautifully balanced with loads of thickness and muscle shape. She stands on an ideal set of feet and legs and has the depth and capacity to produce.

Consistent on her production, bringing to any program easy fleshing, milk and excellent udder and overall correct conformation.

Blackcap 247D puts everything together in such a complete package.

Reckoning was the reigning Intermediate Angus Champion at both the 2021 OKC Cattlemen's Congress & 2020 NAILE! His dam was an extremely successful multiple time champion at all levels and is now producing breed changers. Reckoning is extremely up-headed & clean fronted with cool neck extension! He possesses ultra flexible joints with desirable body depth, dimension and muscle shape. Hair quality is a BONUS too. His sire, Believe, is one of Canada's highly valuable sires of recent times.

Reckoning is not only a bull to improve show quality, but is a great choice to improve herds of all types with his tremendous breed character, testicle shape, joint & foot quality, and overall excellent phenotype!



Bova-Tech Ltd.

P.O. Box 80142 Airdrie, Alberta

T4B 2V8 Canada

Tel: (403) 332-1567

E-mail: info@bova-tech.com





B T L

EMBRYOS AVAILABLE

Riverside 20Z
ROSEWALL



Riverside Rosewall 20Z is a very productive moderate framed well-balanced cow with a beautiful udder. She is a hard-working individual that no matter the mating, the progeny is a top heifer in the replacement pen or future herd bull.



Maternal Brothers

NETWORTH 20Y & PREDOMINANT 21X

SAV 9578
Bloodline



The \$250,000 top seller from the 2020 SAV sale and one of the most exciting upcoming bulls in the breed. SAV Bloodline 9578 combines the most dominant and valuable maternal lines at SAV with Blackcap May 4136 and Emblynette 2369.

Bloodline has awestruck all who have seen him with his massive dimension, soundness, and herd-bull charisma.

Donor Care
Facility

Embryo Collection,
Freezing & Transplants

IVF - In Vitro
Fertilization

Export
Certified

In-Clinic & On
Farm Services

Recipient
Programs

Bova-Tech Ltd.

P.O. Box 80142 Airdrie, Alberta T4B 2V8 Canada

Tel: (403) 332-1567 E-mail: info@bova-tech.com

B T L

EMBRYOS AVAILABLE

Riverside 20Z ROSEWALL



Riverside Rosewall 20Z is a very productive moderate framed well- balanced cow with a beautiful udder. She is a hard-working individual that no matter the mating the progeny is a top heifer in the replacement pen or future herd bull.



Maternal Brothers

NETWORTH 20Y & PREDOMINANT 21X

MYERS M39 Fair-N-Square



The product of disciplined, laser focused breeding, Fair-N-Square is built by maternal excellence, longevity and genuine Angus quality. His Thunder dam is backed by power and productivity from a Myers foundation female who bred first-service A.I. 11 consecutive years.

Fair-N-Square is unique for his balanced length and depth of body, with impressive volume, performance and quality you'd expect from the Myers program. Displaying both Foot EPDs in the Top 1%, and a host of other traits hitting breed optimums, Fair-N-Square will mitigate foot issues and propel your program forward for \$Combined traits.

Donor Care Facility Embryo Collection, Freezing & Transplants IVF - In Vitro Fertilization Export Certified In-Clinic & On Farm Services Recipient Programs

Bova-Tech Ltd.

P.O. Box 80142 / Airdrie, Alberta T4B 2V8 Canada

Tel: (403) 332-1567 E-mail: info@bova-tech.com



EMBRYOS AVAILABLE

Riverside 20Z **ROSEWALL**



Riverside Rosewall 20Z is a very productive moderate framed well- balanced cow with a beautiful udder. She is a hard-working individual that no matter the mating the progeny is a top heifer in the replacement pen or future herd bull.



Maternal Brothers
NETWORTH 20Y & PREDOMINANT 21X

Coleman 7219 **RESOLVE**



Coleman Resolve 7219 is huge footed and very extended through his front one third. Resolve is a very impressive bull, pretty hard to fault.

He is loaded with pure power, great structured, plenty of rib, body, and bone. With none other than Coleman Donna 714 as his dam, and SAV Renown 3439 as his sire this makes him as solid as they come.

Coleman Resolve is the full brother to ZWT Summit and has more mass and rib than his brother. He is loaded with pure power, great structured, plenty of rib, body, and bone. With none other than 714 as his dam, this makes him as solid as they come.

Donor Care Facility

Embryo Collection, Freezing & Transplants

IVF - In Vitro Fertilization

Export Certified

In-Clinic & On Farm Services

Recipient Programs

Bova-Tech Ltd.

B T L



Embryos for Sale

www.bova-tech.com

(403) 332-1567

RIVERBEND
314 
Queen

VIN-MAR 9563
O'Reilly Factor



Queen 314N is a maternal sister to Select Sires' calving easy and top carcass bull EXT Traveler 205.

Vin-Mar O'Reilly is an extremely unique combination of flawless phenotype and structure. This bull is as big boned, thick made, and sound.

Her first daughter was Res. Grand Champion at the Canadian Junior National. She is both a genetic gem, and a powerful front pasture cow that originates from the prestigious Riverbend Ranch.

O'Reilly Factor was the most phenotypically imposing Angus bull shown at the 2011 NWSS that combined calving ease EPDs with and extraordinary growth. Many cattlemen admired the extra bone, body, style, and muscle shape that he possesses. He's an easy fleshing bull like his sire Final Answer, as balanced as the come and easy to look at.

Queen 314 is phenomenal in her phenotype, and flaw less in her production.

Donor Care Facility

Embryo Collection, Freezing & Transplants

IVF - In Vitro Fertilization

Export Certified

In-Clinic & On Farm Services

Recipient Programs

Bova-Tech Ltd.

P.O. Box 80142 Airdrie, Alberta T4B 2V8 Canada
Tel: (403) 332-1567 E-mail: info@bova-tech.com



Bova-Tech Ltd.

B T L



Embryos for Sale

www.bova-tech.com

(403) 332-1567

BBF

Pleasant Pill

516N



Presenting the dam of Triara "Above Par 666T". Pleasant Pill 516 found her way to be one of the top cows that have built the Triara breeding program.

Not surprising she comes from a famous cow family that produced the breed legend B/R New Frontier 095.

She is a very impressive cow with a nice udder and great overall conformation. A top quality genetics that will leave its mark in any herd.

HF

Tiger

5T



HF Tiger 5T - Tiger is probably the winningest Bull in Canadian Angus history. Along with all his accomplishments he was overall Champion at the World Angus Forum.

A true testament of Tiger's prolific ability to breed is reflected in the fact that progeny in numerous herds have gone on to top shows and sales throughout the country. He had a son sell for \$92,000.

This bull represents all the qualities people look for in Angus cattle. He has been admired by many astute cattlemen for his correct structure, appealing muscle shape, and proud character.

Donor Care
Facility

Embryo Collection,
Freezing & Transplants

IVF - In Vitro
Fertilization

Export
Certified

In-Clinic & On
Farm Services

Recipient
Programs



Bova-Tech Ltd.

P.O. Box 80142 Airdrie, Alberta T4B 2V8 Canada

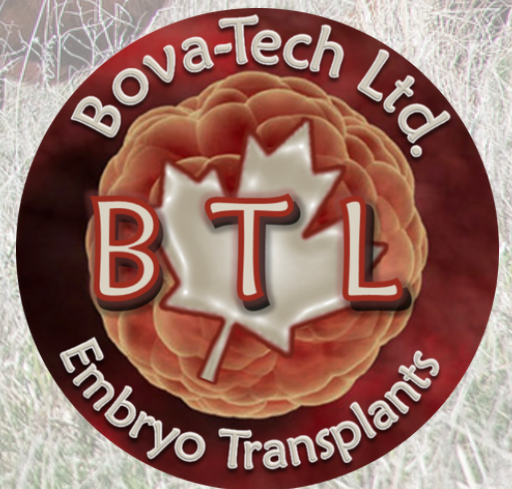
Tel: (403) 332-1567 E-mail: info@bova-tech.com



RED ANGUS

EMBRYOS

For Sale



Bova-Tech Ltd.

B T L



Embryos for Sale

www.bova-tech.com

(403) 332-1567

**Red ACC
LAMBDA 1Z**



A blend of a well-known pedigrees and a top donor cow from Anderson cattle Co. Red ACC Lambda 1Z is a dark red, moderated framed with lots of muscle definition and a high milk EPD.

She is the dam of Red ACC Bigshot 118E a bull that surprised everyone in the spring when he was purchased by a syndicate during the 2018 bull sale.

1Z is a very stylish smooth fronted cow with lot of eye appeal. She is a really good cow with another outstanding calve at side this year, weaned on August 14th weighing 751 pounds at around 6.5 months of age.

**RED COCKBURN
Assassin 624D**



Assassin 624D is a bull that has created quite stir in the Red Angus industry. He is very well balanced, combining low birth, explosive growth, outstanding pheno-type, great EPD's and from a very prestigious cow family in Canada. Assassin is the first son we sell of our new calving ease herd sire Specialist, Assassins combination of calving ease and exceptional growth are hard to find.

Assassins dam is an exceptional young cow and is a maternal sister to Ribeye 308U. She is proving to be one of our top producers and is destined to be a great donor cow, just like her dam 443P. A maternal sister to Assassin was one of the high selling bred heifers at the power and perfection sale this past fall at \$15,000

- Donor Care Facility**
- Embryo Collection, Freezing & Transplants**
- IVF - In Vitro Fertilization**
- Export Certified**
- In-Clinic & On Farm Services**
- Recipient Programs**

Bova-Tech Ltd.

P.O. Box 80142 Airdrie, Alberta T4B 2V8 Canada

Tel: (403) 332-1567 E-mail: info@bova-tech.com



Bova-Tech Ltd.

B T L



Embryos for Sale

www.bova-tech.com

(403) 332-1567

Red ACC

LAMBDA 1Z



CREED 214C



A blend of a well-known pedigrees and a top donor cow from Anderson cattle Co. Red ACC Lambda 1Z is a dark red, moderated framed with lots of muscle definition and a high milk EPD. She is the dam of Red ACC Bigshot 118E a bull that surprised everyone in the spring when he was purchased by a syndicate during the 2018 bull sale.

1Z is a very stylish smooth fronted cow with lot of eye appeal. She is a really good cow with another outstanding calve at side this year, weaned on August 14th weighing 751 pounds at around 6.5 months of age.

Herd sires with the ability to combine the power that Red Wheel Creed possesses with exceptional maternal strength in an outcross pedigree are rare to find. Creed has the length of spine, muscle expression, bone and foot size which he transmits into his calves. This bull is backed by an exceptional dam and cow family. Creed's dam, Black Wheel Jestress 1Y is a herd bull producing female. The Jestress cow family is noted for exceptional udders and hoof quality and being big ribbed productive females. A few straws of semen were available during the Pinnacle Sale in 2018, the quest for the very best Red Angus seedstock in Canada may be found. the significance of this great breeding bull is fully demonstrated throughout the pedigree, statistical information and the footnote discussion. this breeding bull, with progeny on the ground, is an opportunity to obtain the influence of one of the most dynamic breeding bulls in the industry today.



2020
Offspring



Donor Care Facility

Embryo Collection, Freezing & Transplants

IVF - In Vitro Fertilization

Export Certified

In-Clinic & On Farm Services

Recipient Programs

Bova-Tech Ltd.

P.O. Box 80142 Airdrie, Alberta T4B 2V8 Canada

Tel: (403) 332-1567 E-mail: info@bova-tech.com



Bova-Tech Ltd.

B T L



Embryos for Sale

www.bova-tech.com

(403) 332-1567

Red ACC

LAMBDA 1Z

RED KJHT

Power Take Off



A blend of a well-known pedigrees and a top donor cow from Anderson cattle Co. Red ACC Lambda 1Z is a dark red, moderated framed with lots of muscle definition and a high milk EPD.

She is the dam of Red ACC Bigshot 118E a bull that surprised everyone on the spring when he was purchased by a syndicated during the 2018 bull sale.

1Z is a very stylish smooth fronted cow with lot of eye appeal. She is a really good cow with another outstanding calve at side this year, weaned on August 14th weighing 751 pounds at around 6.5 months of age.

KJHT Power Take Off is a bull who attained national championship status at just nine months of age and continued this trend until his show career ended being crowned National Champion bull in Ft. Worth 2019.

The son of Soo Line Power Eye 161X was mated perfectly to SRA Paint Bucket, one of the impressive females born into the Picabo family of excellence. PTO has worlds of muscle shape and power from end to end. He is big centered and has an impeccable look.

This is a beef business bull, and his influence in the industry will greatly enhance the future of the breed.

Donor Care Facility

Embryo Collection, Freezing & Transplants

IVF - In Vitro Fertilization

Export Certified

In-Clinic & On Farm Services

Recipient Programs

Bova-Tech Ltd.

P.O. Box 80142 Airdrie, Alberta T4B 2V8 Canada

Tel: (403) 332-1567 E-mail: info@bova-tech.com



Bova-Tech Ltd.

B T L



Embryos for Sale

www.bova-tech.com

(403) 332-1567

Red ACC

LAMBDA 1Z



A blend of a well-known pedigrees and a top donor cow from Anderson cattle Co. Red ACC Lambda 1Z is a dark red, moderated framed with lots of muscle definition and a high milk EPD.

She is the dam of Red ACC Bigshot 118E a bull that surprised everyone in the spring when he was purchased by a syndicate during the 2018 bull sale.

1Z is a very stylish smooth fronted cow with lot of eye appeal. She is a really good cow with another outstanding calve at side this year, weaned on August 14th weighing 751 pounds at around 6.5 months of age.

U-2

Reckoning 149A



High selling Red Angus to Six Mile for \$46,000 for 1/2 interest. Reckoning progeny are the right kind of cattle with a superior foot quality, added volume and very important-easy to market. The list of high sellers sired by Reckoning is very impressive due to how its progeny works in the real world and show ring value.



Daughters of Red U-2 Reckoning 149B



Donor Care Facility

Embryo Collection, Freezing & Transplants

IVF - In Vitro Fertilization

Export Certified

In-Clinic & On Farm Services

Recipient Programs

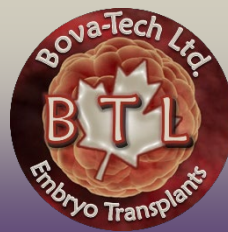
Bova-Tech Ltd.

**P.O. Box 80142 Airdrie, Alberta T4B 2V8 Canada
Tel: (403) 332-1567 E-mail: info@bova-tech.com**



Bova-Tech Ltd.

B T L



Embryos for Sale

www.bova-tech.com

(403) 332-1567

Red ACC

LAMBDA 1Z



A blend of a well-known pedigrees and a top donor cow from Anderson cattle Co. Red ACC Lambda 1Z is a dark red, moderated framed with lots of muscle definition and a high milk EPD.

She is the dam of Red ACC Bigshot 118E a bull that surprised everyone in the spring when he was purchased by a syndicate during the 2018 bull sale.

1Z is a very stylish smooth fronted cow with lot of eye appeal. She is a really good cow with another outstanding calve at side this year, weaned on August 14th weighing 751 pounds at around 6.5 months of age.

DUFF

1941

Red Wood



This Red Angus bull may be just as noble as the ancient redwood trees "Duff Redwood 1941". What a specimen he is in terms of depth of rib, fleshing ability and overall dimension in a moderate frame. Just like the coastal trees, you truly need to see Redwood for yourself to understand his overall quality and value.

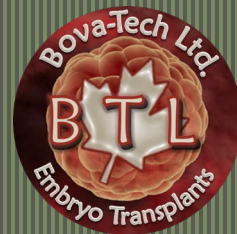
Duff Redwood 1941 will undoubtedly leave deep roots in the beef industry.

- Donor Care Facility**
- Embryo Collection, Freezing & Transplants**
- IVF - In Vitro Fertilization**
- Export Certified**
- In-Clinic & On Farm Services**
- Recipient Programs**

Bova-Tech Ltd.

P.O. Box 80142 Airdrie, Alberta T4B 2V8 Canada
Tel: (403) 332-1567 E-mail: info@bova-tech.com

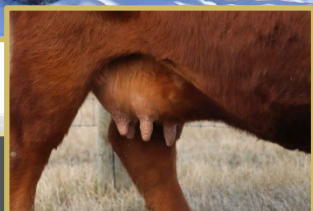




RED ACC 13B *Tibbie*

RED NCK

Coming In Hot 24E



Red ACC Tibbie 13B is out of a very productive red cow. This red, moderate framed cow is made correct and true. She has a style and broodiness combined with a very unique pedigree. Red Tibbie is a feminine easy fleshing cow with a perfect udder and great rib.

Coming In Hot has structural integrity and carries that maternal presence that is rare to achieve. He has a balanced design, added muscle shape, and is level and sound with stout features. He has a clean front end, deep body with much power and mass. His calves display tremendous quality and style, his body volume, fleshing ease, soundness and style are simply hard to find.

Donor Care Facility

Embryo Collection, Freezing & Transplant

IVF - In Vitro Fertilization

Export Certified

In-Clinic & On Farm Services

Recipient Programs

Bova-Tech Ltd.

P.O. Box 80142 Airdrie, Alberta T4B 2V8 Canada
Tel: (403) 332-1567 E-mail: info@bova-tech.com



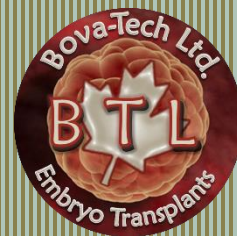
Bova-Tech Ltd.

B T L

Embryos for Sale

www.bova-tech.com

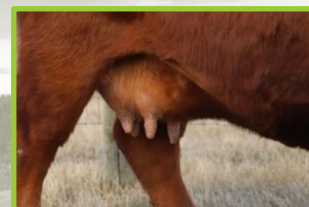
(403) 332-1567



RED ACC *Tibbie* 13B



Red ACC Tibbie 13B is out of a very productive red cow. This red, moderate framed cow is made correct and true. She has a style and broodiness combined with a very unique pedigree. Red Tibbie is a feminine easy fleshing cow with a perfect udder and great rib.



RREDS COMMON SENSE G933

RREDS Common Sense G933 has all the mass and body of his sire. He is one of the most universal and complete bulls produced by Rhodes Red Angus. His mother is a coming 5 year old Code Red that hasn't missed. The Code red daughters have a way of raising high sellers.

Common Sense is one of the stoutest Seneca sons produced. If you are looking for the same body design as Seneca but want a bit more frame, Common Sense is a great choice. Great Angus character with high testosterone and athleticism.



Donor Care Facility

Embryo Collection, Freezing & Transplants

IVF - In Vitro Fertilization

Export Certified

In-Clinic & On Farm Services

Recipient Programs

Bova-Tech Ltd.

P.O. Box 80142 Airdrie, Alberta T4B 2V8 Canada
Tel: (403) 332-1567 E-mail: info@bova-tech.com



Bova-Tech Ltd.

B T L

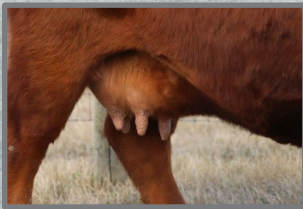
Embryos for Sale

www.bova-tech.com

(403) 332-1567



RED ACC 13B
Tibbie



Red ACC Tibbie 13B is out of a very productive red cow. This red, moderate framed cow is made correct and true. She has a style and broodiness combined with a very unique pedigree. Red Tibbie is a feminine easy fleshing cow with a perfect udder and great rib.

U-2
Reckoning 149A



High selling Red Angus to Six Mile for \$46,000 for 1/2 interest. Reckoning progeny are the right kind of cattle with a superior foot quality, added volume and very important- easy to market. The list of high sellers sired by Reckoning is very impressive due to how its progeny works in the real world and show ring. value.



Daughters of Red U-2 Reckoning



Donor Care Facility

Embryo Collection, Freezing & Transplants

IVF - In Vitro Fertilization

Export Certified

In-Clinic & On Farm Services

Recipient Programs

Bova-Tech Ltd.

P.O. Box 80142 Airdrie, Alberta T4B 2V8 Canada
Tel: (403) 332-1567 E-mail: info@bova-tech.com



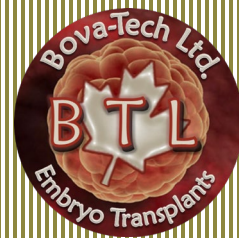
Bova-Tech Ltd.

B T L

Embryos for Sale

www.bova-tech.com

(403) 332-1567



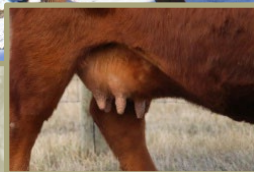
RED ACC 13B

Tibbie

DUFF

1941

Red Wood



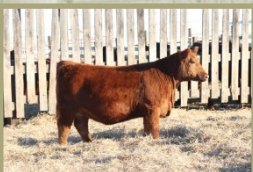
Red ACC Tibbie 13B is out of a very productive red cow. This red, moderate framed cow is made correct and true. She has a style and broodiness combined with a very unique pedigree. Red Tibbie is a feminine easy fleshing cow with a perfect udder and great rib.

This Red Angus bull may be just as noble as the ancient redwood trees "Duff Redwood 1941". What a specimen he is in terms of depth of rib, fleshing ability and overall dimension in a moderate frame. Just like the coastal trees, you truly need to see Redwood for yourself to understand his overall quality and value. Duff Red Wood will undoubtedly leave deep roots in the beef industry.

**2020 Son
Tibbie 13B x
Reckoning 149A
ACCI 117H**

**2020 Son
Tibbie 13B x
Mann Red Box
ACCI 119H**

**2020 Daughter
Tibbie 13B x
Mann Red Box
ACCI 47H**



Donor Care Facility

Embryo Collection, Freezing & Transplants

IVF - In Vitro Fertilization

Export Certified

In-Clinic & On Farm Services

Recipient Programs

Bova-Tech Ltd.

P.O. Box 80142 Airdrie, Alberta T4B 2V8 Canada
Tel: (403) 332-1567 E-mail: info@bova-tech.com



Bova-Tech Ltd.

B T L

Embryos for Sale

www.bova-tech.com

(403) 332-1567



RED ACC *Tibbie* 13B



Red ACC Tibbie 13B is out of a very productive red cow. This red, moderate framed cow is made correct and true. She has a style and broodiness combined with a very unique pedigree. Red Tibbie is a feminine easy fleshing cow with a perfect udder and great rib.



RREDS **SENECA** 7316

Seneca has proven to be a true-breeding. It's uncommon to have a bull produce top-notch sons and then come back with remarkable daughters. His performance and muscle allow him to compete with any other cattle in terms of gain while still siring females that are incredibly productive. The females are moderate, easy doing, and are proving to be some of the most productive young cows.

Seneca is a proven bull that possibly is the most prepotent herd sire encountered. Early rapid growth with reduced mature size designing daughters that are built to last in any environment.



Son of Seneca
RREDS Fundamental
8818



Donor Care Facility

Embryo Collection, Freezing & Transplants

IVF - In Vitro Fertilization

Export Certified

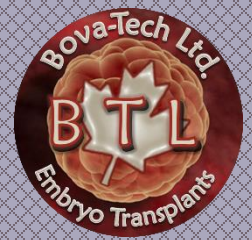
In-Clinic & On Farm Services

Recipient Programs

Bova-Tech Ltd.

P.O. Box 80142 Airdrie, Alberta T4B 2V8 Canada
Tel: (403) 332-1567 E-mail: info@bova-tech.com





RED ACC 13B
Tibbie



Red ACC Tibbie 13B is out of a very productive red cow. This red, moderate framed cow is made correct and true. She has a style and broodiness combined with a very unique pedigree. Red Tibbie is a feminine easy fleshing cow with a perfect udder and great rib.



SSS

TYCOON

225E



Tycoon Sons

Tycoon comes from the outstanding SSS program and has been used extensively in W Sunrise Angus and Y Coulee programs. He has an impressive profile, proud front and great feet and soundness with an impressive calving ease sire with a hard to fault pedigree. He is a dark red, masculine sire, that carries himself flawlessly in the bull pen. Consistency and phenotype speak for itself.



Donor Care Facility

Embryo Collection, Freezing & Transplants

IVF - In Vitro Fertilization

Export Certified

In-Clinic & On Farm Services

Recipient Programs

Bova-Tech Ltd.

P.O. Box 80142 Airdrie, Alberta T4B 2V8 Canada
Tel: (403) 332-1567 E-mail: info@bova-tech.com





Red ACC
Tibbie 144D



Red ACC Tibbie 144D is a super smooth daughter of Tibbie 33Z. This red, moderate framed cow is the complete package with a thick top and square hip. She brings so much to the table with her massive rib and body, perfect udder, and overall femininity. Tibbie 144D is a moderate made, easy fleshing female that is very appealing to the eye. Her pedigree is stacked with proven genetics known to produce well and maintain their structural integrity well into the future. Here is a great opportunity to start a program with this proven cow.

DUFF 1941
Red Wood



This Red Angus bull may be just as noble as the ancient redwood trees "Duff Redwood 1941". What a specimen he is in terms of depth of rib, fleshing ability and overall dimension in a moderate frame. Just like the coastal trees, you truly need to see Redwood for yourself to understand his overall quality and value. Duff Red Wood will undoubtedly leave deep roots in the beef industry.

Donor Care Facility

Embryo Collection, Freezing & Transplants

IVF - In Vitro Fertilization

Export Certified

In-Clinic & On Farm Services

Recipient Programs



Bova-Tech Ltd.

B T L

Embryos for Sale

www.bova-tech.com

(403) 332-1567



Red ACC
TIBBIE 46D

RED U-2
Authentic 139A



Red ACC Tibbie 46D has a strong maternal pedigree with solid conformation, partnered with calving ease and stayability. She has a moderate frame with thick top and square hip.

This is a cow with a great udder and milking ability. This female has powerful genetics that will leave you wanting more.

Maternal greatness and sheer power are combined in this leading sire, Red U-2 Authentic 139A. Authentic was a past high-selling bull at U-2 Ranch and has gone on to be a potent breeder that has had positive production results for the three progressive breeders that own him. Phenotypically he is the ideal Red Angus sire, super clean fronted with an attractive head that will add length, power and over all completeness to his progeny. He is out of one of the great donors at U-2, Stormy 7202T, and complimented by a stacked maternal pedigree!

Donor Care Facility

Embryo Collection, Freezing & Transplants

IVF - In Vitro Fertilization

Export Certified

In-Clinic & On Farm Services

Recipient Programs

Bova-Tech Ltd.

P.O. Box 80142 Airdrie, Alberta T4B 2V8 Canada

Tel: (403) 332-1567 E-mail: info@bova-tech.com



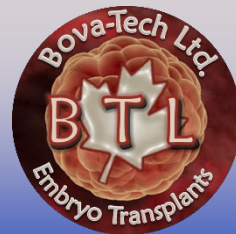
Bova-Tech Ltd.

B T L

Embryos for Sale

www.bova-tech.com

(403) 332-1567



**Red ACC
TIBBIE 46D**

**RED WHEEL
CREED 214C**



Red ACC Tibbie 46D has a strong maternal pedigree with solid conformation, partnered with calving ease and stayability. She has a moderate frame with thick top and square hip.

This is a cow with a great udder and milking ability. This female has powerful genetics that will leave you wanting more.

Herd sires with the ability to combine the power that Red Wheel Creed possesses with exceptional maternal strength in an outcross pedigree are rare to find. Creed has the length of spine, muscle expression, bone and foot size which he transmit into his calves. This bull is backed by an exceptional dam and cow family. Creed's dam, Black Wheel Jestress 1y is a herd bull producing female. The Jestress cow family is noted for exceptional udders and hoof quality and being big ribbed productive females. A few straws of semen were available during the Pinnacle Sale in 2018, the quest for the very best Red Angus seedstock in Canada may be found. The significance of this great breeding bull is fully demonstrated throughout the pedigree, statistical information and the footnote discussion. This breeding bull, with progeny on the ground, is an opportunity to obtain the influence of one of the most dynamic breeding bulls in the industry today.

Donor Care Facility

Embryo Collection, Freezing & Transplants

IVF - In Vitro Fertilization

Export Certified

In-Clinic & On Farm Services

Recipient Programs

Bova-Tech Ltd.

P.O. Box 80142 Airdrie, Alberta T4B 2V8 Canada

Tel: (403) 332-1567 E-mail: info@bova-tech.com



RED ACC

Roxie

81C



Here is a smooth, long bodied feminine cow that comes from a well backed family. Her daughter 32F has been stealing the spotlight her whole life and made the championship drive in the Little Lady Classic at Ag Ex. Her dam and granddam pattern very similar to her, moderate framed, level udder floor, lots of capacity, shape and natural thickness.

RREDS

**COMMON
SENSE**

G933

RREDS Common Sense G933 has all the mass and body of his sire. He is one of the most universal and complete bulls produced by Rhodes Red Angus. His mother is a coming 5 year old Code Red that hasn't missed. The Code red daughters have a way of raising high sellers. Common Sense is one of the stoutest Seneca sons produced. If you are looking for the same body design as Seneca but want a bit more frame, Common Sense is a great choice. Great Angus character with high testosterone and athleticism.



**Donor Care
Facility**

**Embryo Collection,
Freezing & Transplants**

**IVF - In Vitro
Fertilization**

**Export
Certified**

**In-Clinic & On
Farm Services**

**Recipient
Programs**

Bova-Tech Ltd.

P.O. Box 80142 Airdrie, Alberta T4B 2V8 Canada

Tel: (403) 332-1567 E-mail: info@bova-tech.com





RED ACC
Roxie 81C

Here is a smooth, long bodied feminine cow that comes from a well backed family. Her daughter 32F has been stealing the spotlight her whole life and made the championship drive in the Little Lady Classic at Ag Ex. Her dam and granddam pattern very similar to her, moderate framed, level udder floor, lots of capacity, shape and natural thickness.



SSS

TYCOON

225E

Tycoon comes from the outstanding SSS program and has been used extensively in W Sunrise Angus and Y Coulee programs. He has an impressive profile, proud front and great feet and soundness with an impressive calving ease sire with a hard to fault pedigree. He is a dark red, masculine sire, that carries himself flawlessly in the bull pen. Consistency and phenotype speak for itself.



Donor Care Facility

Embryo Collection, Freezing & Transplants

IVF - In Vitro Fertilization

Export Certified

In-Clinic & On Farm Services

Recipient Programs

Bova-Tech Ltd.

P.O. Box 80142 Airdrie, Alberta T4B 2V8 Canada

Tel: (403) 332-1567 E-mail: info@bova-tech.com



Bova-Tech Ltd.

B T L



Embryos for Sale

www.bova-tech.com

(403) 332-1567

Donor Care
Facility

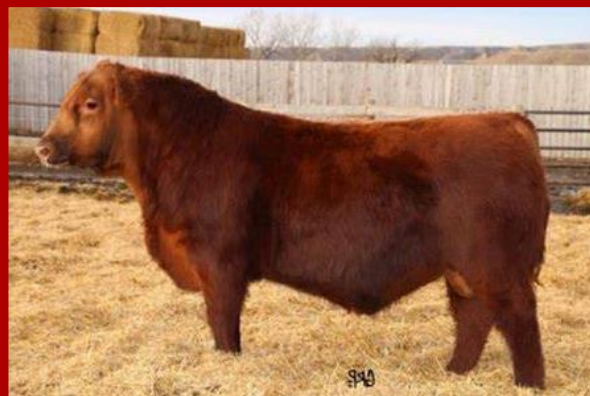
Embryo Collection,
Freezing & Transplants

IVF - In Vitro
Fertilization

Export
Certified

In-Clinic & On
Farm Services

Recipient
Programs



Red ACC 94C
TIBBIE

RED U-2 413B
Foreigner

Red ACC Tibbie 94C has a striking profile and extension through her front, making her hard to miss. This cow is built right from front to back with a well balanced EPDs and a lots of milk.

She has a excellent udder, with extra volume and good feet. Tibbie is very sound yet expresses herself in a feminine broody kind of way.

You can't help but admire the quality and potential that this female has to offer.

Foreigner was a high seller in 2015 at \$73,000. His uniqueness in pedigree has attracted top breeders from across North America.

Foreigner was bred to some of the most elite donor and front-end cows, these matings have pumped out some of the most impressive outcross herd bulls ever raised.

He has outbred himself on many of these prospects and has passed on his super reliable built in calving ease.



Bova-Tech Ltd.

P.O. Box 80142 Airdrie, Alberta
T4B 2V8 Canada

Tel: (403) 332-1567 E-mail: info@bova-tech.com



Bova-Tech Ltd.

B T L

Embryos for Sale

www.bova-tech.com

(403) 332-1567



Red ACC **TIBBIE** 98B



Red ACC Tibbie 98B has clean front structure, smooth makeup and refinement. This cow is admired for her sweet makeup and feminine features yet she is moderate and beefy.

With her easy-fleshing ability and exceptional mothering traits, 98B is a donor you won't want to miss using.

RREDS **COMMON SENSE** G933

RREDS Common Sense G933 has all the mass and body of his sire. He is one of the most universal and complete bulls produced by Rhodes Red Angus. His mother is a coming 5 year old Code Red that hasn't missed. The Code red daughters have a way of raising high sellers.

Common Sense is one of the stoutest Seneca sons produced. If you are looking for the same body design as Seneca but want a bit more frame, Common Sense is a great choice. Great Angus character with high testosterone and athleticism.



Donor Care Facility

Embryo Collection, Freezing & Transplants

IVF - In Vitro Fertilization

Export Certified

In-Clinic & On Farm Services

Recipient Programs

Bova-Tech Ltd.

P.O. Box 80142 Airdrie, Alberta T4B 2V8 Canada
Tel: (403) 332-1567 E-mail: info@bova-tech.com



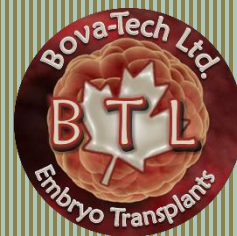
Bova-Tech Ltd.

B T L

Embryos for Sale

www.bova-tech.com

(403) 332-1567



Red ACC **TIBBIE** 98B



Red ACC Tibbie 98B has clean front structure, smooth makeup and refinement. This cow is admired for her sweet makeup and feminine features yet she is moderate and beefy.

With her easy-fleshing ability and exceptional mothering traits, 98B is a donor you won't want to miss using.

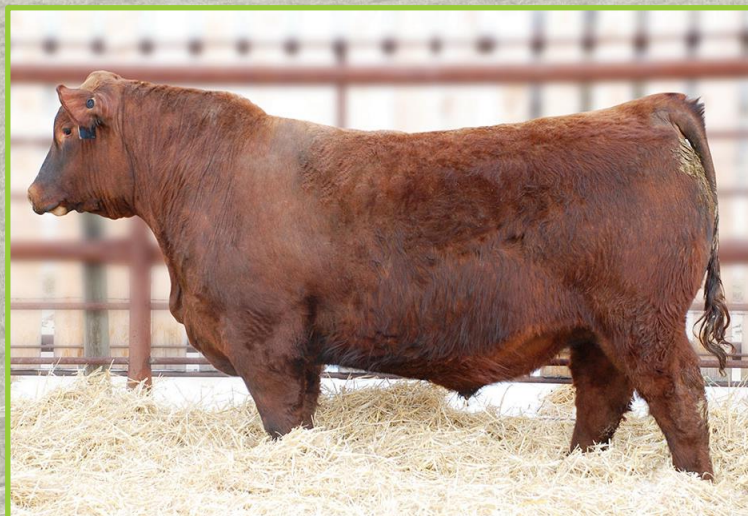


SSS

TYCOON

225E

Tycoon comes from the outstanding SSS program and has been used extensively in W Sunrise Angus and Y Coulee programs. He has an impressive profile, proud front and great feet and soundness with an impressive calving ease sire with a hard to fault pedigree. He is a dark red, masculine sire, that carries himself flawlessly in the bull pen. Consistency and phenotype speak for itself.



Donor Care Facility

Embryo Collection, Freezing & Transplants

IVF - In Vitro Fertilization

Export Certified

In-Clinic & On Farm Services

Recipient Programs

Bova-Tech Ltd.

P.O. Box 80142 Airdrie, Alberta T4B 2V8 Canada

Tel: (403) 332-1567 E-mail: info@bova-tech.com



Red CCC
530C

Towaw Larkaba

DUFF

1941

Red Wood



Red CCC Towaw Larkaba 530C is dark red, deep bodied, long and feminine with a nice udder. She was a reserve Champion heifer at the 2016 Olds Fall Classic and Reserved Junior Yearling heifers 2016 at Farmfair International.

Her maternal grandsire, Red TerRon Digger 11L, was a direct son of the great Ter-Ron Brandy 11C cow, and is the grand sire of the \$80,000 Red Cockburn Ribeye bull. He bred until he was 11 years old and was one of the soundest structured bulls ever used at Towaw. Her grandam, Larkaba 10M, is a direct Red Towaw Indeed 104H daughter, she was a donor cow sold to Wildcat Creek for their flush program.

This Red Angus bull may be just as noble as the ancient redwood trees "Duff Redwood 1941". What a specimen he is in terms of depth of rib, fleshing ability and overall dimension in a moderate frame. Just like the coastal trees, you truly need to see Redwood for yourself to understand his overall quality and value. Duff Redwood 1941 will undoubtedly leave deep roots in the beef industry.



Donor Care Facility **Embryo Collection, Freezing & Transplants** **IVF - In Vitro Fertilization** **Export Certified** **In-Clinic & On Farm Services** **Recipient Programs**

Bova-Tech Ltd.

B T L

Embryos for Sale

www.bova-tech.com

(403) 332-1567



Red Scotts  **1055Y**
CJB JEWEL

KJHT FCF

Alibi



Jewel 1055Y is an exceptional female in many ways; she carries a strong maternal pedigree, performance and structure to lead a program to the next level. She is moderate frame with thick top and square hip.

This is a cow with a superior udder and milking ability. If you want to talk about cow power, this female is just that.



Alibi is the first Rioja son in Canada. Another outstanding individual out of a lead donor cow from Shady Knoll Cattle Co. SRA Paintbucket and sired by Rojas Rioja 6052. Riojas genetics in a high demand and very marketable in Canada and across the USA. SRA Paintbucket is none other than Power Take Off's Dam. Semen of this exclusive sire is limited with just a few straws offered for sale during 2020. Alibi is a stout bull with a clean front end and balanced EPDs.

Donor Care Facility

Embryo Collection, Freezing & Transplants

IVF - In Vitro Fertilization

Export Certified

In-Clinic & On Farm Services

Recipient Programs

Bova-Tech Ltd.

**P.O. Box 80142 Airdrie, Alberta T4B 2V8 Canada
Tel: (403) 332-1567 E-mail: info@bova-tech.com**



Bova-Tech Ltd.

B T L

Embryos for Sale

www.bova-tech.com

(403) 332-1567



Red Scotts



1055Y

CJB JEWEL

RED U-2

Authentic

139A



Jewel 1055Y is an exceptional female in many ways; she carries a strong maternal pedigree, performance and structure to lead a program to the next level. She is moderate frame with thick top and square hip.

This is a cow with a superior udder and milking ability. If you want to talk about cow power, this female is just that.

Maternal greatness and sheer power are combined in this leading sire, Red U-2 Authentic 139A. Authentic was a past high-selling bull at U-2 Ranch and has gone on to be a potent breeder that has had positive production results for the three progressive breeders that own him. Phenotypically he is the ideal Red Angus sire, super clean fronted with an attractive head that will add length, power and over all completeness to his progeny. He is out of one of the great donors at U-2, Stormy 7202T, and complimented by a stacked maternal pedigree!

Donor Care Facility

Embryo Collection, Freezing & Transplants

IVF - In Vitro Fertilization

Export Certified

In-Clinic & On Farm Services

Recipient Programs

Bova-Tech Ltd.

P.O. Box 80142 Airdrie, Alberta T4B 2V8 Canada

Tel: (403) 332-1567 E-mail: info@bova-tech.com



Bova-Tech Ltd.

B T L

Embryos for Sale

www.bova-tech.com

(403) 332-1567



Red Scotts



1055Y

CJB JEWEL

Red RRA

733

One and Only



Jewel 1055Y is an exceptional female in many ways; she carries a strong maternal pedigree, performance and structure to lead a program to the next level. She is moderate frame with thick top and square hip.

This is a cow with a superior udder and milking ability. If you want to talk about cow power, this female is just that.

Outstanding depth of body and capacity. Bold and robust in his design yet angular and attractive.

Exceptional neck extension and look coupled with mass and balance.

Impressive EPD spread from moderate BW to exceptional YW ranking at top 2% of the breed.

Donor Care Facility

Embryo Collection, Freezing & Transplants

IVF - In Vitro Fertilization

Export Certified

In-Clinic & On Farm Services

Recipient Programs

Bova-Tech Ltd.

P.O. Box 80142 Airdrie, Alberta T4B 2V8 Canada

Tel: (403) 332-1567 E-mail: info@bova-tech.com



Bova-Tech Ltd.

B T L

Embryos for Sale

www.bova-tech.com

(403) 332-1567



Red Mar Mac 104E
BONITA

Pie 057
CAPTAIN



The lead off female, and no coincidence the high seller bred heifer out of the Mar Mac 2018 female sale. Bonita 104E is an easy fleshing, thick, moderate framed feminine cow with lots of body depth and high performance EPDs. Weaning and yearling weight in the top 1% of the breed.

The Bonita cow family is well known for its maternal strength and breed consistency. Her dam, Bonita 65X, is one of the Canadian legends and high producing cow.



Pie Captain 057 has stood out since day one as a favorite with his volume. This bull not only has all the type, body capacity, and the top cow backing him but he was the #1 weaning and #1 yearling weight calf with only a 99 BW ratio and he did it without excessive frame. He stands on ideal feet and legs.

Captain also scanned a 5.69 IMF 121 ratio and 15.43 REA 109. It's really hard to find a bull that does so many things right. During the Pieper Red Angus 2021 sale he sold for \$150,000.



Donor Care Facility

Embryo Collection, Freezing & Transplants

IVF - In Vitro Fertilization

Export Certified

In-Clinic & On Farm Services

Recipient Programs

Bova-Tech Ltd.

P.O. Box 80142 Airdrie, Alberta T4B 2V8 Canada

Tel: (403) 332-1567 E-mail: info@bova-tech.com



Bova-Tech Ltd.

B T L



IVF Embryos for Sale

www.bova-tech.com

(403) 332-1567

Donor Care Facility

Embryo Collection, Freezing & Transplants

IVF - In Vitro Fertilization

Export Certified

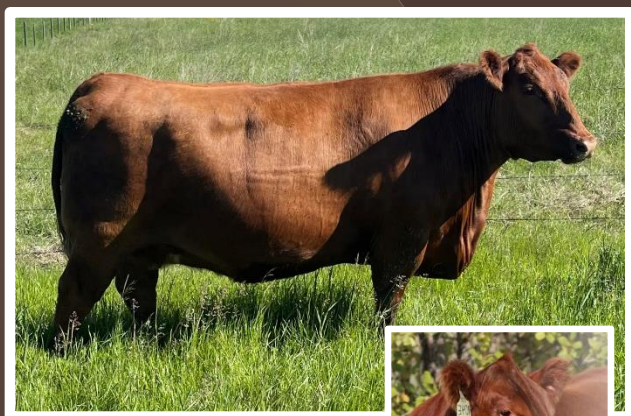
In-Clinic & On Farm Services

Recipient Programs

Red Mar Mac 104F
BONITA



Red Minburn 3Y
Copenhagen



The lead off female and no coincidence the high seller breed heifer out of the Mar Mac 2018 female sale. Bonita is an easy fleshing, thick, moderate a feminine cow with a lots of body depth and high performance EPDs with weaning and yearling weight on the top 1% of the breed. the Bonita cow family is well known for its maternal strength and breed consistency. Bonita 65X her dam, is one of the Canadian legends and high producing cow.



The Masterpiece record-setting outcross bull that keeps siring bull and heifer calves that rise to the top. Copenhagen 3Y has 14 sons working in the purebred herds and many more in some of the top commercial programs in the country. His daughters have turned into model Angus cows, built to stand the test of time.

Daughters of Copenhagen 3Y



Bova-Tech Ltd.

P.O. Box 80142 Airdrie, Alberta
T4B 2V8 Canada

Tel: (403) 332-1567 E-mail: info@bova-tech.com



Bova-Tech Ltd.

B T L

Embryos for Sale

www.bova-tech.com

(403) 332-1567



Red Mar Mac 104E
BONITA

Duff 18114
RED BLOOD



The lead off female, and no coincidence the high seller bred heifer out of the Mar Mac 2018 female sale. Bonita 104E is an easy fleshing, thick, moderate framed feminine cow with lots of body depth and high performance EPDs. Weaning and yearling weight in the top 1% of the breed.

The Bonita cow family is well known for its maternal strength and breed consistency. Her dam, Bonita 65X, is one of the Canadian legends and high producing cow.



"Power in the Blood" is perfectly exemplified by Duff Red Blood 18114. This young sire is truly a unique individual that is evoking generations of Angus history in a dark Red version. Combing the legendary Dixie Erica and Juanada cow families signifies the breed altering capabilities of this new sire. You'll notice that he is backed by one of the most prolific and highly productive donors in the Angus breed, Juanada 927K. Her impact in our herd and to the beef industry is immeasurable. The 927K daughter that lies on the bottom side of Red Blood's pedigree is truly impressive from every angle.

Donor Care Facility

Embryo Collection, Freezing & Transplants

IVF - In Vitro Fertilization

Export Certified

In-Clinic & On Farm Services

Recipient Programs



Bova-Tech Ltd.

P.O. Box 80142 Airdrie, Alberta T4B 2V8 Canada

Tel: (403) 332-1567 E-mail: info@bova-tech.com



Bova-Tech Ltd.

B T L

Embryos for Sale

www.bova-tech.com

(403) 332-1567



Red

LONE STONE

Beula

35H



Red Lone Stone Beula 35H is a very well made female that is well-balanced. Buela is the complete package, an impressive cow with a small frame build (5.0 to 5.5 frame score). She has a very nice temperament, beautiful coat, solid feet, and perfect udder. The potential for 35H to become a very productive cow and raise outstanding offspring is already proven with her well-formed bull calf that hit the ground this year.

Red U2 284F

DOMINION

Red U2 Dominion 284F is an outcross sire who continues to make a name for himself as a sire who stamps his progeny with phenotype, foot quality, and stoutness. His pedigree has generations of maternal legends and a matron derived from a notable cow family known for fertility, calf performance, and udder quality.



Donor Care Facility

Embryo Collection, Freezing & Transplants

IVF - In Vitro Fertilization

Export Certified

In-Clinic & On Farm Services

Recipient Programs

Bova-Tech Ltd.

P.O. Box 80142 Airdrie, Alberta T4B 2V8 Canada

Tel: (403) 332-1567 E-mail: info@bova-tech.com



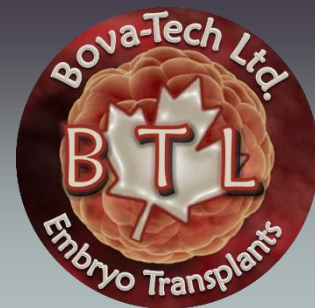
Bova-Tech Ltd.

B T L

Embryos for Sale

www.bova-tech.com

(403) 332-1567



Red
LONE STONE
Beula 35H



Red Lone Stone Beula 35H is a very well made female that is well-balanced. Buela is the complete package, an impressive cow with a small frame build (5.0 to 5.5 frame score). She has a very nice temperament, beautiful coat, solid feet, and perfect udder. The potential for 35H to become a very productive cow and raise outstanding offspring is already proven with her well-formed bull calf that hit the ground this year.

Silveiras 1378
Mission Nexus



Silveiras Mission Nexus needs no introduction to prove the impact he has made to Red Angus herds that were able to use him during the short time his semen was available. He has left a long term impact on the females in the Lost Creek herd, producing females that are angular, feminine with great udders, and a strong hip as they are producing high quality calves that will stay in the herd. With minimal amounts of semen available to the market, lots like this are far and few between.

Donor Care Facility

Embryo Collection, Freezing & Transplants

IVF - In Vitro Fertilization

Export Certified

In-Clinic & On Farm Services

Recipient Programs

Bova-Tech Ltd.

P.O. Box 80142 Airdrie, Alberta T4B 2V8 Canada

Tel: (403) 332-1567 E-mail: info@bova-tech.com



Bova-Tech Ltd.

B T L

Embryos for Sale

www.bova-tech.com

(403) 332-1567



Red

LONE STONE

Beula

35H



Red Lone Stone Beula 35H is a very well made female that is well-balanced. Buela is the complete package, an impressive cow with a small frame build (5.0 to 5.5 frame score). She has a very nice temperament, beautiful coat, solid feet, and perfect udder. The potential for 35H to become a very productive cow and raise outstanding offspring is already proven with her well-formed bull calf that hit the ground this year.

MANN

RED BOX

55C



Redbox 55C is currently one of the most talked about Red Angus bulls in the breed. His calves display tremendous quality and style. His demand and inquiries stretch across the US, Canada and South America. The dam of Redbox is Peltons Miss AJA 0839U, extremely sound and impressive from every angle. She consistently transmits quality and eye appeal. Redbox displays unmatched phenotypic quality and possesses many needed traits to inject into the Red Angus Breed. His body volume, fleshing ease, soundness and style are simply hard to find. Upon inspection Redbox invokes a "wow" from the mouth of all that have seen him. His ability to make his mark as one of the great maternal sires of the breed is imminent.



Donor Care Facility

Embryo Collection, Freezing & Transplants

IVF - In Vitro Fertilization

Export Certified

In-Clinic & On Farm Services

Recipient Programs

Bova-Tech Ltd.

P.O. Box 80142 Airdrie, Alberta T4B 2V8 Canada

Tel: (403) 332-1567 E-mail: info@bova-tech.com



Bova-Tech Ltd.

B T L



Embryos for Sale

www.bova-tech.com

(403) 332-1567

**Red SSF
271A
SCOTTS KARI**

**RED U-2
Authentic
139A**



Kari 271A is a moderate framed cow carrying a lot of performance, she ranks top 2% of the breed for weaning weight, top 3% for yearling weight and top 4% for Maternal.

She has excellent feet and udder, and is very sound and a well-made cow with an EPD on the top 1% for stay-ability. Kari 271A has the phenotypic quality and genetic profile to enhance any program.



Maternal greatness and sheer power are combined in this leading sire, Red U-2 Authentic 139A.

Authentic was a past high-selling bull at U2 and has gone on to be a potent breeder that has had positive production results for the three progressive breeders that own him. Phenotypically he is the ideal Red Angus sire, super clean fronted with an attractive head that will add length, power and over all completeness to his progeny. He is out of one of the great donors at U2, Stormy 7202T, and complimented by a stacked maternal pedigree!

**Donor Care
Facility**

**Embryo Collection,
Freezing & Transplants**

**IVF - In Vitro
Fertilization**

**Export
Certified**

**In-Clinic & On
Farm Services**

**Recipient
Programs**

Bova-Tech Ltd.

P.O. Box 80142 Airdrie, Alberta T4B 2V8 Canada
Tel: (403) 332-1567 E-mail: info@bova-tech.com



Bova-Tech Ltd.

B T L



Embryos for Sale

www.bova-tech.com

(403) 332-1567

**Red SSF
271A
SCOTTS KARI**

**RED WHEEL
CREED 214C**



Kari 271A is a moderate frame cow carrying a lot of performance, she ranks top 2% of the breed for weaning weight, top 3 % for yearling weight and top 4% for Maternal.

She has an excellent feet and udder, very sound and well-made cow with an EPD on the top 1% for stayability.

Kari 271A has the phenotypic quality and genetic profile to enhance any program.

Herd sires with the ability to combine the power that Red Wheel Creed possesses with exceptional maternal strength in an outcross pedigree are rare to find. Creed has the length of spine, muscle expression, bone and foot size which he transmits into his calves. This bull is backed by an exceptional dam and cow family. Creed's dam, Black Wheel Jestress 1y is a herd bull producing female. The Jestress cow family is noted for exceptional udders and hoof quality and being big ribbed, productive females. A few straws of semen were available during the Pinnacle Sale in 2018, the quest for the very best Red Angus seedstock in Canada may be found. the significance of this great breeding bull is fully demonstrated throughout the pedigree, statistical information and the footnote discussion. this breeding bull, with progeny on the ground, is an opportunity to obtain the influence of one of the most dynamic breeding bulls in the industry today.

Donor Care Facility

Embryo Collection, Freezing & Transplants

IVF - In Vitro Fertilization

Export Certified

In-Clinic & On Farm Services

Recipient Programs



Bova-Tech Ltd.

P.O. Box 80142 Airdrie, Alberta
T4B 2V8 Canada

Tel: (403) 332-1567 E-mail: info@bova-tech.com



Bova-Tech Ltd.

B T L



Embryos for Sale

www.bova-tech.com

(403) 332-1567

Red SSF
271A
SCOTTS KARI

Red U2 284F
DOMINION

IVF



Kari 271A is a moderate framed cow carrying a lot of performance, she ranks top 2% of the breed for weaning weight, top 3% for yearling weight and top 4% for Maternal.

She has an excellent feet and udder, very sound and well-made cow with an EPD on the top 1% for stay-ability.

Kari 271A has the phenotypic quality and genetic profile to enhance any program.

**FEMALE
SEXED**

Red U2 Dominion 284F is an outcross sire who continues to make a name for himself as a sire who stamps his progeny with phenotype, foot quality, and stoutness.

His pedigree has generations of maternal legends and a matron derived from a notable cow family known for fertility, calf performance, and udder quality.

Donor Care Facility

Embryo Collection, Freezing & Transplants

IVF - In Vitro Fertilization

Export Certified

In-Clinic & On Farm Services

Recipient Programs

Bova-Tech Ltd.

P.O. Box 80142 Airdrie, Alberta
T4B 2V8 Canada

Tel: (403) 332-1567 E-mail: info@bova-tech.com



Bova-Tech Ltd.

B T L



Embryos for Sale

www.bova-tech.com

(403) 332-1567

Red SSF
271A

SCOTTS KARI

RED SOO

Power Eye
161X



Kari 271A is a moderate frame cow carrying a lot of performance, she ranks top 2% of the breed for weaning weight, top 3 % for yearling weight and top 4% for Maternal.

She has an excellent feet and udder, very sound and well-made cow with an EPD on the top 1% for stayability. Kari 271A has the phenotypic quality and genetic profile to enhance any program.

Red Soo Line Power Eye 161X (#1406779) was the \$76,000 bull from the 2015 Mile High Classic Red Angus Auction.

He is the most famous son of Red Cockburn Ribeye 308U.

Power Eye has produced numerous high sellers, herd sires, and show winning progeny.

Power Eye produces stout, high performing cattle with an abundance of quality and power.

Donor Care Facility

Embryo Collection, Freezing & Transplants

IVF - In Vitro Fertilization

Export Certified

In-Clinic & On Farm Services

Recipient Programs

Bova-Tech Ltd.

P.O. Box 80142 Airdrie, Alberta
T4B 2V8 Canada

Tel: (403) 332-1567 E-mail: info@bova-tech.com



Bova-Tech Ltd.

B T L



Embryos for Sale

www.bova-tech.com

(403) 332-1567

**Red SSF
271A
SCOTT'S KARI**

**RED KJHT
Power Take Off**



Kari 271A is a moderate framed cow carrying a lot of performance, she ranks top 2% of the breed for weaning weight, top 3% for yearling weight and top 4% for Maternal.

She has an excellent feet and udder, very sound and well-made cow with an EPD on the top 1% for stay-ability.

Kari 271A has the phenotypic quality and genetic profile to enhance any program.

KJHT Power Take Off is a bull who attained national championship status at just nine months of age and continued this trend until his show career ended being crowned National Champion bull in Ft. Worth 2019.

The son of Soo Line Power Eye 161X was mated perfectly to SRA Paint Bucket, one of the impressive females born into the Picabo family of excellence. PTO has worlds of muscle shape and power from end to end. He is big centered and has an impeccable look. This is a beef business bull, and his influence in the industry will greatly enhance the future of the breed.

**Donor Care
Facility**

**Embryo Collection,
Freezing & Transplants**

**IVF - In Vitro
Fertilization**

**Export
Certified**

**In-Clinic & On
Farm Services**

**Recipient
Programs**



Bova-Tech Ltd.

P.O. Box 80142 Airdrie, Alberta
T4B 2V8 Canada

Tel: (403) 332-1567 E-mail: info@bova-tech.com



Bova-Tech Ltd.

B T L



Embryos for Sale

www.bova-tech.com

(403) 332-1567

Red SSF
271A
SCOTTS KARI

DUFF 1941
Red Wood



Kari 271A is a moderate framed cow carrying a lot of performance, she ranks top 2% of the breed for weaning weight, top 3% for yearling weight and top 4% for Maternal. She has an excellent feet and udder, very sound and well-made cow with an EPD on the top 1% for stay-ability.

Kari 271A has the phenotypic quality and genetic profile to enhance any program.

This Red Angus bull may be just as noble as the ancient redwood trees "Duff Redwood 1941". What a specimen he is in terms of depth of rib, fleshing ability and overall dimension in a moderate frame. Just like the coastal trees, you truly need to see Redwood for yourself to understand his overall quality and value.

Duff Redwood 1941 will undoubtedly leave deep roots in the beef industry.

Donor Care Facility

Embryo Collection, Freezing & Transplants

IVF - In Vitro Fertilization

Export Certified

In-Clinic & On Farm Services

Recipient Programs



Bova-Tech Ltd.

P.O. Box 80142 Airdrie, Alberta
T4B 2V8 Canada

Tel: (403) 332-1567 E-mail: info@bova-tech.com



Bova-Tech Ltd.

B T L



Embryos for Sale

www.bova-tech.com

(403) 332-1567

Red SSF
271A
SCOTT'S KARI

Red MRLA
Resource
137E



Kari 271A is a moderate frame cow carrying a lot of performance, she ranks top 2% of the breed for weaning weight, top 3 % for yearling weight and top 4% for Maternal.

She has an excellent feet and udder, very sound and well-made cow with an EPD on the top 1% for stayability.

Kari 271A has the phenotypic quality and genetic profile to enhance any program.

Resource's influence has been widely accepted across North America. His daughters at the U2 Dispersal topped at \$23,000 with 30 Open Resource daughters averaging \$9,000 at the U2 Dispersal.

A performance sire in a breed that has done a great job on calving ease and maternal instinct.

- Top 55% of the breed for weaning weight
- Top 15% of the breed for yearling weight
- Top 15% of the breed for scrotal circumference
- Top 8% of the breed for carcass weight
- Top 35% of the breed for ribeye
- Top 3% of the breed for mature weight



Son of MRLA
Resource sold for
\$130,000
March 2020

Donor Care Facility

Embryo Collection, Freezing & Transplants

IVF - In Vitro Fertilization

Export Certified

In-Clinic & On Farm Services

Recipient Programs

Bova-Tech Ltd.

P.O. Box 80142 Airdrie, Alberta T4B 2V8 Canada
Tel: (403) 332-1567 E-mail: info@bova-tech.com



Bova-Tech Ltd.

B T L

Embryos for Sale

www.bova-tech.com

(403) 332-1567



RED KF

Thelma

9J

RED TER-RON

Realdeal 01W



Thelma 9J is a proven producer that will leave a long lasting impression on the genetic base of any herd. She is an Elite/Premier Dam with the Canadian Angus Association.

9J is very sound with great feet and udder as well as balanced EPD's. She combines a great deal of femininity with incredible length of spine and body mass.

One of the most unique bulls to come out of Ter-Ron in recent years. Depth of body, stoutness, very good footed, structurally correct and has a dark, rich hair coat.

Farm Fair International Champion in 2010.

Canadian Western Agribition Grand Champion 2010

2010 Canadian Red Angus show bull of the year 2010.

Donor Care Facility

Embryo Collection, Freezing & Transplants

IVF - In Vitro Fertilization

Export Certified

In-Clinic & On Farm Services

Recipient Programs



Bova-Tech Ltd.

P.O. Box 80142 Airdrie, Alberta T4B 2V8 Canada

Tel: (403) 332-1567 E-mail: info@bova-tech.com



HEREFORD

EMBRYOS

For Sale



Bova-Tech Ltd.

B T L

EMBRYOS FOR SALE

WWW.BOVATECH.COM

(403) 332-1567



Torch View 1J **AMARILLO**

Torch View Amarillo 1J is a special female. Massive and bold in her design, yet refined through her skull and front third. She is destined to make the "cornerstone cow" all day long.



H DEBERARD 7454



H Deberard 7454 ET is a popular National Champion Polled Hereford bull that is siring great calves. Deberard was named grand champion polled Hereford Bull at the National Western Stock Show. He is a son of the popular UPS Sensation 2296 ET and out of RST GAT NST Y79D LADY 54B ET. In addition to winning Denver, Deberard won the Western Nugget National Hereford Show in Reno and was the high selling bull in Hoffman's 2018 bull sale.

Donor Care Facility

Embryo Collection, Freezing & Transplants

IVF - In Vitro Fertilization

Export Certified

In-Clinic & On Farm Services

Recipient Programs



Bova-Tech Ltd.

P.O. Box 80142 Airdrie, Alberta T4B 2V8 Canada

Tel: (403) 332-1567 E-mail: info@bova-tech.com



Bova-Tech Ltd.

B T L



Embryos for Sale

www.bova-tech.com

(403) 332-1567

AGA 46E 40T

Miss Britisher

CHURCHILL
Sensation 028X



Britisher 40T is impressive on her phenotype, a cow with great body depth and nice udder which make her unmatched on her character and eye appeal at the UH ranch.

40T is gaining momentum with her daughters in production; they are beautifully uddered, easy fleshing and moderate framed individuals that are carbon copies of her dam.

The breed's leading high accuracy calving ease bull that excels for both maternal and end product value.

Sensation ranks in the top 15% of the breed for 11 EPDs and Indexes!

Sensation has become the new gold standard for calving ease plus growth and carcass quality!

Donor Care Facility Embryo Collection, Freezing & Transplants IVF - In Vitro Fertilization Export Certified In-Clinic & On Farm Services Recipient Programs



Bova-Tech Ltd.

P.O. Box 80142 Airdrie, Alberta T4B 2V8 Canada

Tel: (403) 332-1567 E-mail: info@bova-tech.com



Bova-Tech Ltd.

B T L



Embryos for Sale

www.bova-tech.com

(403) 332-1567

BR 24W

179Y

Standard Lady

PDHR 20J

47R

Stanmore



AGA 191G STANDARD ET 73L
 LBH 73L STANDARD 268P
 LBH 22B MISS RED DOMINO 102M
 DBHR 268P WATCHMAN 24W
 C 93G LARCENY 86L
 DBHR 86L ULTRA LADY 36N
 DBHR ULTRA BRIT LASS 42H
BR 24W STANDARD LADY 179Y
 CH 82B EXPLORER 122E
 CC 122E EXCURSION 68J
 CC 40T JILLIAN 58Y
 DBHR 68J STANDARD 155S
 AGA 656U STANDARD ET 124J
 DBHR 124J STANDARD 144M
 JLR STANDARD LADY 113C

CTY K STANMORE 4016D
 AGA 4016 STANMORE 121G
 AGA 99B CENTENNIAL 51D
 AGA 121G STANMORE 20J
 AGA 9012 STANMORE 40E
 AGA40E MISS STANMORE 80G
 AGA 16B MISS GENERATOR 20E
PDHR 20J STANMORE 47R
 GENERATING STAR 18C
 C 18C GENERAL D LAD 80G
 AC MISS 10U STD COMMANDER 30Y
 PDHR 80G GENERAL LASS 91K
 JNHR DIAMOND 40B
 PDHR MISS 40B DIAMOND 92E
 PDHR MISS 18Y DOMINO LASS 53B

Donor Care Facility Embryo Collection, Freezing & Transplants IVF - In Vitro Fertilization Export Certified In-Clinic & On Farm Services Recipient Programs



Bova-Tech Ltd.

P.O. Box 80142 Airdrie, Alberta T4B 2V8 Canada
 Tel: (403) 332-1567 E-mail: info@bova-tech.com



Bova-Tech Ltd.

B T L

EMBRYOS FOR SALE

WWW.BOVATECH.COM

(403) 332-1567



LAMPORT'S 87N

VICTORIA 46T

NJW 73S M326

TRUST 100W ET



Victoria 46T is an ideal made, moderate frame and easy fleshing cow with great feet and disposition. 46T has produced the best 2013 heifer calf of the herd, and she is the kind of female that will produce offspring that never goes out of style and will last in the herd longer than most. Her two daughters in the herd are very attractive with lost of eye appeal and femininity.

Victoria 46T is a very productive and fertile cow that became a front pasture donor with an awesome production.

Trust is exactly that and breeders world wide have trusted this sire to build their herds. A Trait Leader for thirteen EPD traits including all three \$indexes. He makes exceptional replacement females and awesome herd sires alike.

We just can't say enough about this outstanding Hereford bull. He does so many things right for the breed. Proven breed leading genetics with extra style, pigment, shape, eye-appeal and balance. His daughters have done a tremendous job worldwide, and powerful sons are equally in demand. His dam is a beautiful, elite P606 daughter backed by a cow family known for superb udders and the ability to produce at the top every year.

Donor Care Facility

Embryo Collection, Freezing & Transplants

IVF - In Vitro Fertilization

Export Certified

In-Clinic & On Farm Services

Recipient Programs

Bova-Tech Ltd.

P.O. Box 80142 Airdrie, Alberta T4B 2V8 Canada

Tel: (403) 332-1567 E-mail: info@bova-tech.com



WAGYU

EMBRYOS

For Sale



KUN GERALDINE
G4



J2351
HIRASHIGETAYASU



Kun Geraldine G4 is stout and deep with femininity along with a pedigree of balance in both carcass quality and performance stemming from foundational lines such as CHR YASUFUKU and ITOZURU DOI build this growth and maternally driven female.

Her genetic balance mated to HIRASGIGETAYASU who's official Japanese progeny test showed that at least 80 percent of his steers would gain A5 or higher will leave you with great carcasses retail value .

Hirashigetayasu (ETJ 001) J2351 was sired by Dai 20 Hirashige J287. Hirashigetayasu's Kedaka lineage shows strong propensity for growth and balance with a larger frame. Females have very good maternal traits and milk very well. Carcasses from his offspring consistently grade on the high end but the marbling has a tendency to be moderately course.

ETJ001 Hirashigetayasu J2351 (FB670) has all three of the Westholme original import bulls in his pedigree (Kedaka, Fujiyoshi, and Tajima). He was sired by Dai 20 Hirashige J287, and his dam is Dai 5 Yuruhime.

- Donor Care Facility**
- Embryo Collection, Freezing & Transplants**
- IVF - In Vitro Fertilization**
- Export Certified**
- In-Clinic & On Farm Services**
- Recipient Programs**

KUN GRACE G11



World K's MICHIFUKU **FB 1615**



Long, deep, excellent rib shape and thickness are some of the quality features for KUN GRACE G11.

Backed by foundation lineage like JVP KIKUYASU -400 who is used to improve frame size and ribeye size while maintaining the Tajima bloodline in offspring .

The mating of her with MICHIFUKU who's genetics are proven by consistent high EBV values for marbling, fineness of marbling and fullblood terminal index will create offspring with exceptional carcassing ability.

World K's Michifuku (FB 1615) was formerly the top marbling bull, according to the Wagyu sire summary. His sire is Monjiro 11550, and his dam is Michiko J655635.

Michifuku's sire produced a carcass that sold for \$21,000 at the 2007 All-Japan Wagyu competition (Zenkoku). Some believe that Michifuku is the most influential bull that ever left Japan and came to the U.S. Michifuku calves are thick with outstanding marbling, and the Wagyu cattle have pleasant dispositions. Most major herds in the U.S. and Australia have used this bull quite a bit, and Michifuku has kept the Wagyu herd alive with his many calves.

Donor Care
Facility

Embryo Collection,
Freezing & Transplants

IVF - In Vitro
Fertilization

Export
Certified

In-Clinic & On
Farm Services

Recipient
Programs

Bova-Tech Ltd.

P.O. Box 80142 Airdrie, Alberta T4B 2V8 Canada

Tel: (403) 332-1567 E-mail: info@bova-tech.com



KUN GEE G13



ITOMORITAKA J2703
HONGEN



With one of the most famous sires in Japan SHIGESHGIGENAMI 10632 in KUN GEE G13's lineage along with KIKUHANA TF 37 known for producing larger faster growing offspring with excellent phenotype and maternal traits.

G13 serves as a perfect combination of proven foundation genetics which is seen in Kun Gee G13 with depth, ribs, shape and square hip, along with lots of femininity and milk.

The mating of her to Itomoritaka J2703 is used to improve size and material characteristics in offspring will leave you with foundation building females.



ETJ002 Itomoritaka J2703 (FB681) another strong, sizable Japanese black Wagyu. In addition to his size, this bull has great potential for marbling and for producing premium calves.

Itomoritaka was sired by Itohirashige (FB680), and his dam was Dai 6 Oefujii J565554-Kuro Koh (FB679).

Itomoritaka, also known as "Rocky," has the highest milk EBV in the Australian breed plan (also high in the United States). This means that any daughters he sires will have the best possible milk production once they're dams.

Donor Care Facility Embryo Collection, Freezing & Transplants IVF - In Vitro Fertilization Export Certified In-Clinic & On Farm Services Recipient Programs



Bova-Tech Ltd.

P.O. Box 80142 Airdrie, Alberta T4B 2V8 Canada
Tel: (403) 332-1567 E-mail: info@bova-tech.com





Wagyu Acres
BLACKGOLD 102



MYM Arubial Q0014
ANTICIPATED



WAGYU ACRES BLACKGOLD 102 IS FEMININE FRONTED, LONG BODIED AND SOUND IN HER FEET AND LEGS. SHE IS VERY EXTENDED IN HER FRONT END AND TRACKS WITH FLEX IN HER LOWER JOINTS.

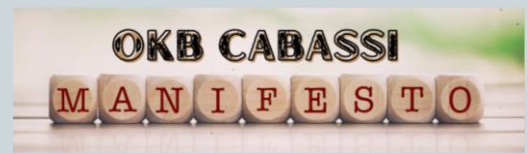
SHE IS A BEAUTIFULLY MADE MOMMA COW WITH FANTASTIC MATERNAL ABILITY. SHE HAS A BALANCED PEDIGREE WITH AMPLE AMOUNTS OF MARBLING ABILITY WITH ENOUGH GROWTH AND MATERNAL TO BALANCE THE PEDIGREE OUT.

MYM ARUBIAL ANTICIPATED Q0014 IS A MATERNAL BROTHER TO BOND 007. HE EXCELS WITH TOP 1% EMA, TOP 2% MARBLING AND TOP 4% MARBLING FINENESS EBVS

ALL INDEXES IN TOP 1% OF THE BREED! HE IS ONLY ONE OF TWO WAGYU SIRES THAT ARE IN THE TOP 5% FOR GL, EMA AND MARBLING AND HE DOES IT SO EASILY.

ANTICIPATED IS AN IDEAL SIRE FOR BEEF ON BEEF PLUS A GREAT BEEF ON DAIRY OPTION, EARLY CALVING, HYBRID GROWTH WITH POWER CARCASS TRAITS. HE'S A GO TO WAGYU HEIFER CARCASS BULL OPTION AS A GLOBAL INTERNATIONAL SIRE INCLUDING THE EU

- Donor Care Facility
- Embryo Collection, Freezing & Transplants
- IVF - In Vitro Fertilization
- Export Certified
- In-Clinic & On Farm Services
- Recipient Programs



Kun Kuntzide Daisy F27 has a typical phenotype with tremendous growth and maternal traits.

Double stacked pedigree of World K's Michifuku makes a perfect combination of proven foundation with depth, ribs, shape and square hip, along with lots of femininity and milk.

Daisy has a nicely balanced genomic EBV profile.

OKB Cabassi Manifesto V1 was sired by Kikutsurudoï TF146 who has the very rare Tanifukudoï lineage in his pedigree.

Tested to carry the most favorable alleles AA in the SCD gene test.

Manifesto has been tested free from the 5 known genetic recessive disorders in Wagyu cattle.

- Donor Care Facility
- Embryo Collection, Freezing & Transplants
- IVF - In Vitro Fertilization
- Export Certified
- In-Clinic & On Farm Services
- Recipient Programs

K Kun
 Kuntzide
 DAISY F27



☆☆☆
YUM BIG **PRIME**
 S154 05H



Kun Kuntzide Daisy F27 has a typical phenotype with tremendous growth and maternal traits.

Double stacked pedigree of World K's Michifuku makes a perfect combination of proven foundation with depth, ribs, shape and square hip, along with lots of femininity and milk.

Daisy has a nicely balanced genomic EBV profile.

Yum Big Prime is free by parentage of all known Wagyu genetic defects. He is ultra-elite in the Australian system for Marble Score EBV and Marble Fineness EBV, elite for F1 Terminal Index and Fullblood Terminal Index and superior for Gestation Length EBV, Birth Weight EBV and Self Replacing Index and better than breed average for Eye Muscle Are EBV and Wagyu Breeder Index. Line bred to the famous foundation Wagyu carcass sire WKS Michifuku from a grandam sired by Itoshigenami, this EBV superstar offers a pedigree that displays 62,6% Tajima; 17% Itozakura; 7.4% Shimane; 2.9% Okayama; .8% Tottori and .4% Kedaka bloodlines.

- Donor Care Facility
- Embryo Collection, Freezing & Transplants
- IVF - In Vitro Fertilization
- Export Certified
- In-Clinic & On Farm Services
- Recipient Programs