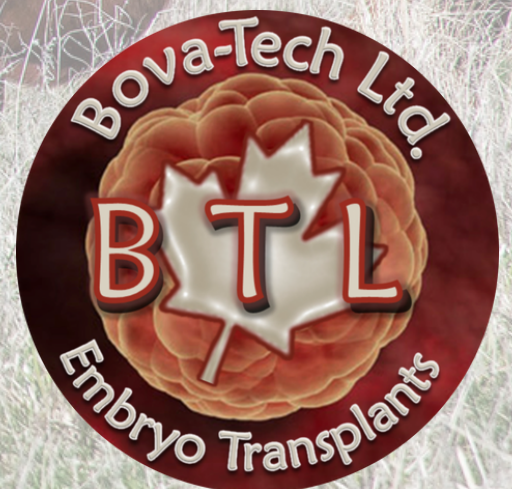


# RED ANGUS

# EMBRYOS

*For Sale*





**Bova-Tech Ltd.**

**B T L**



**Embryos for Sale**

[www.bova-tech.com](http://www.bova-tech.com)

**(403) 332-1567**

**Red ACC**

**LAMBDA 1Z**



A blend of a well-known pedigrees and a top donor cow from Anderson cattle Co. Red ACC Lambda 1Z is a dark red, moderated framed with lots of muscle definition and a high milk EPD.

She is the dam of Red ACC Bigshot 118E a bull that surprised everyone in the spring when he was purchased by a syndicate during the 2018 bull sale.

1Z is a very stylish smooth fronted cow with lot of eye appeal. She is a really good cow with another outstanding calve at side this year, weaned on August 14<sup>th</sup> weighing 751 pounds at around 6.5 months of age.

**DUFF**

**1941**

**Red Wood**



This Red Angus bull may be just as noble as the ancient redwood trees "Duff Redwood 1941". What a specimen he is in terms of depth of rib, fleshing ability and overall dimension in a moderate frame. Just like the coastal trees, you truly need to see Redwood for yourself to understand his overall quality and value.

Duff Redwood 1941 will undoubtedly leave deep roots in the beef industry.

**Donor Care  
Facility**

**Embryo Collection,  
Freezing &  
Transplants**

**IVF - In Vitro  
Fertilization**

**Export  
Certified**

**In-Clinic &  
On Farm  
Services**

**Recipient  
Programs**



**Bova-Tech Ltd.**

**P.O. Box 80142 Airdrie, Alberta T4B 2V8 Canada**

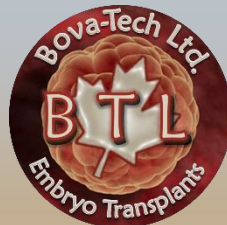
**Tel: (403) 332-1567 E-mail: [info@bova-tech.com](mailto:info@bova-tech.com)**





**Bova-Tech Ltd.**

**B T L**



**Embryos for Sale**

[www.bova-tech.com](http://www.bova-tech.com)

**(403) 332-1567**

**Red ACC  
LAMBDA 1Z**



A blend of a well-known pedigrees and a top donor cow from Anderson cattle Co. Red ACC Lambda 1Z is a dark red, moderated framed with lots of muscle definition and a high milk EPD.

She is the dam of Red ACC Bigshot 118E a bull that surprised everyone in the spring when he was purchased by a syndicate during the 2018 bull sale.

1Z is a very stylish smooth fronted cow with lot of eye appeal. She is a really good cow with another outstanding calve at side this year, weaned on August 14<sup>th</sup> weighing 751 pounds at around 6.5 months of age.

**RED COCKBURN  
Assassin 624D**



Assassin 624D is a bull that has created quite stir in the Red Angus industry. He is very well balanced, combining low birth, explosive growth, outstanding pheno-type, great EPD's and from a very prestigious cow family in Canada. Assassin is the first son we sell of our new calving ease herd sire Specialist, Assassins combination of calving ease and exceptional growth are hard to find.

Assassins dam is an exceptional young cow and is a maternal sister to Ribeye 308U. She is proving to be one of our top producers and is destined to be a great donor cow, just like her dam 443P. A maternal sister to Assassin was one of the high selling bred heifers at the power and perfection sale this past fall at \$15,000

**Donor Care  
Facility**

**Embryo Collection,  
Freezing &  
Transplants**

**IVF - In Vitro  
Fertilization**

**Export  
Certified**

**In-Clinic &  
On Farm  
Services**

**Recipient  
Programs**



**Bova-Tech Ltd.**

**P.O. Box 80142 Airdrie, Alberta T4B 2V8 Canada**

**Tel: (403) 332-1567 E-mail: [info@bova-tech.com](mailto:info@bova-tech.com)**





**Red ACC**  
**LAMBDA 1Z**



A blend of a well-known pedigrees and a top donor cow from Anderson cattle Co. Red ACC Lambda 1Z is a dark red, moderated framed with lots of muscle definition and a high milk EPD. She is the dam of Red ACC Bigshot 118E a bull that surprised everyone in the spring when he was purchased by a syndicate during the 2018 bull sale.

1Z is a very stylish smooth fronted cow with lot of eye appeal. She is a really good cow with another outstanding calve at side this year, weaned on August 14<sup>th</sup> weighing 751 pounds at around 6.5 months of age.



2020  
 Offspring



**RED WHEEL**  
**CREED 214C**



Herd sires with the ability to combine the power that Red Wheel Creed possesses with exceptional maternal strength in an outcross pedigree are rare to find. Creed has the length of spine, muscle expression, bone and foot size which he transmits into his calves. This bull is backed by an exceptional dam and cow family. Creed's dam, Black Wheel Jestress 1Y is a herd bull producing female. The Jestress cow family is noted for exceptional udders and hoof quality and being big ribbed productive females. A few straws of semen were available during the Pinnacle Sale in 2018, the quest for the very best Red Angus seedstock in Canada may be found. the significance of this great breeding bull is fully demonstrated throughout the pedigree, statistical information and the footnote discussion. this breeding bull, with progeny on the ground, is an opportunity to obtain the influence of one of the most dynamic breeding bulls in the industry today.

**Donor Care Facility**

**Embryo Collection, Freezing & Transplants**

**IVF - In Vitro Fertilization**

**Export Certified**

**In-Clinic & On Farm Services**

**Recipient Programs**

**Bova-Tech Ltd.**

P.O. Box 80142 Airdrie, Alberta T4B 2V8 Canada  
 Tel: (403) 332-1567 E-mail: [info@bova-tech.com](mailto:info@bova-tech.com)



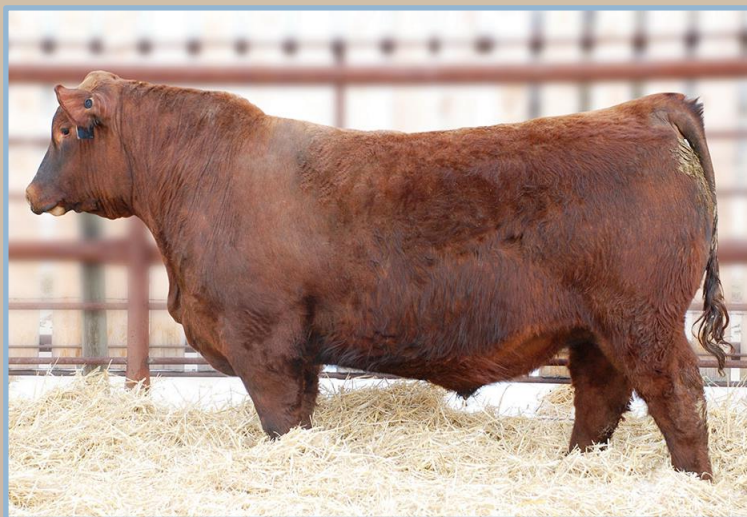


**RED ACC**  
*Roxie* **81C**

Here is a smooth, long bodied feminine cow that comes from a well backed family. Her daughter 32F has been stealing the spotlight her whole life and made the championship drive in the Little Lady Classic at Ag Ex. Her dam and granddam pattern very similar to her, moderate framed, level udder floor, lots of capacity, shape and natural thickness.



Tycoon comes from the outstanding SSS program and has been used extensively in W Sunrise Angus and Y Coulee programs. He has an impressive profile, proud front and great feet and soundness with an impressive calving ease sire with a hard to fault pedigree. He is a dark red, masculine sire, that carries himself flawlessly in the bull pen. Consistency and phenotype speak for itself.



**Donor Care Facility**

**Embryo Collection, Freezing & Transplants**

**IVF - In Vitro Fertilization**

**Export Certified**

**In-Clinic & On Farm Services**

**Recipient Programs**

**Bova-Tech Ltd.**

P.O. Box 80142 Airdrie, Alberta T4B 2V8 Canada

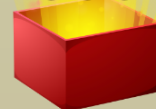
Tel: (403) 332-1567 E-mail: [info@bova-tech.com](mailto:info@bova-tech.com)



**RED ACC 13B**  
*Tibbie*

**MANN**  
**RED BOX**

**55C**



Red ACC Tibbie 13B is out of a very productive red cow. This red, moderate framed cow is made correct and true. She has a style and broodiness combined with a very unique pedigree. Red Tibbie is a feminine easy fleshing cow with a perfect udder and great rib.



Redbox 55C is one of the most talked about Red Angus bulls in the breed. His calves display tremendous quality and style, he will be a program leader at Duff's. His demand and inquiries stretch across the US, Canada and South America. The dam of Redbox is Peltons Miss AJA 0839U and at 11 years of age she is extremely sound and impressive from every angle. She consistently transmits quality and eye appeal. Redbox displays unmatched phenotypic quality and possesses many needed traits to inject into the Red Angus Breed. His body volume, fleshing ease, soundness and style are simply hard to find. Upon inspection Redbox invokes a "wow" from the mouth of all that have seen him. His ability to make his mark as one of the great maternal sires of the breed is imminent.



**Donor Care  
 Facility**

**Embryo Collection,  
 Freezing & Transplants**

**IVF - In Vitro  
 Fertilization**

**Export  
 Certified**

**In-Clinic & On  
 Farm Services**

**Recipient  
 Programs**



**RED ACC 13B**  
*Tibbie*



**PIE**

**222**

**HOLLYWOOD**



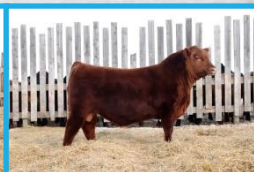
Red ACC Tibbie 13B is out of a very productive red cow. This red, moderate framed cow is made correct and true. She has a style and broodiness combined with a very unique pedigree. Red Tibbie is a feminine easy fleshing cow with a perfect udder and great rib.

Pie Hollywood is the world record selling Red Angus bull from the spring 2023 bull sale season, selling for \$400,000 valuation. His record setting appraisal is the result of his combination of curve bending calving ease and growth, breed leading carcass, captivating phenotype and is backed by the renown Abigrace cow family. We were not drawn to the bull by his outstanding numbers, but they are off the charts. We appreciate Hollywood for his massive phenotype and you couldn't put a better foot on a Red Angus bull.

**2020 Son**  
**Tibbie 13B x**  
**Reckoning 149A**  
**ACCI 117H**

**2020 Son**  
**Tibbie 13B x**  
**Mann Red Box**  
**ACCI 119H**

**2020 Daughter**  
**Tibbie 13B x**  
**Mann Red Box**  
**ACCI 47H**



**Donor Care**  
**Facility**

**Embryo Collection,**  
**Freezing & Transplants**

**IVF - In Vitro**  
**Fertilization**

**Export**  
**Certified**

**In-Clinic & On**  
**Farm Services**

**Recipient**  
**Programs**



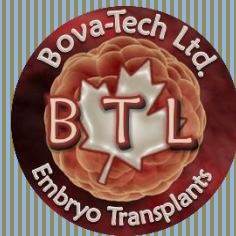
**Bova-Tech Ltd.**

**B T L**

**Embryos for Sale**

[www.bova-tech.com](http://www.bova-tech.com)

**(403) 332-1567**



**RED ACC 13B**  
*Tibbie*



Red ACC Tibbie 13B is out of a very productive red cow. This red, moderate framed cow is made correct and true. She has a style and broodiness combined with a very unique pedigree. Red Tibbie is a feminine easy fleshing cow with a perfect udder and great rib.



**Red**  
**Cockburn 3059**  
**PREMIUM**



Red Cockburn Premium 3059. Premium's performance, presence, foot quality and overall mass make him unique. Combine that with the long line of consistent, fertile donor dams on both sides of his pedigree it truly sets him apart. The udder and foot quality runs deep in the Hawk cow family and the first Momentum daughters only add to the excitement. He was the lead bull in the Grand Champion pen at Agribition, Denver and the Medicine Hat pen show. Premium froze quality semen and measured 38cm scrotal at 12 months of age. Bolt epds Ce 11 bw - 0.1 WW 75 YW 116 m 28.

**Donor Care  
Facility**

**Embryo Collection,  
Freezing &  
Transplants**

**IVF - In Vitro  
Fertilization**

**Export  
Certified**

**In-Clinic &  
On Farm  
Services**

**Recipient  
Programs**



**Bova-Tech Ltd.**

**P.O. Box 80142 Airdrie, Alberta T4B 2V8 Canada**

**Tel: (403) 332-1567 E-mail: [info@bova-tech.com](mailto:info@bova-tech.com)**





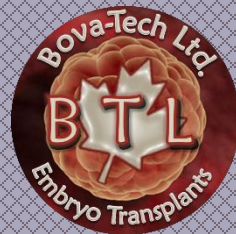
**Bova-Tech Ltd.**

**B T L**

**Embryos for Sale**

[www.bova-tech.com](http://www.bova-tech.com)

**(403) 332-1567**



**RED ACC 13B**  
*Tibbie*



Red ACC Tibbie 13B is out of a very productive red cow. This red, moderate framed cow is made correct and true. She has a style and broodiness combined with a very unique pedigree. Red Tibbie is a feminine easy fleshing cow with a perfect udder and great rib.



**SSS**

**TYCOON**

**225E**



**Tycoon Sons**

Tycoon comes from the outstanding SSS program and has been used extensively in W Sunrise Angus and Y Coulee programs. He has an impressive profile, proud front and great feet and soundness with an impressive calving ease sire with a hard to fault pedigree. He is a dark red, masculine sire, that carries himself flawlessly in the bull pen. Consistency and phenotype speak for itself.



**Donor Care  
Facility**

**Embryo Collection,  
Freezing &  
Transplants**

**IVF - In Vitro  
Fertilization**

**Export  
Certified**

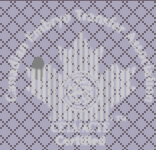
**In-Clinic &  
On Farm  
Services**

**Recipient  
Programs**

**Bova-Tech Ltd.**

**P.O. Box 80142 Airdrie, Alberta T4B 2V8 Canada**

**Tel: (403) 332-1567 E-mail: [info@bova-tech.com](mailto:info@bova-tech.com)**





**Bova-Tech Ltd.**

**B T L**

**Embryos for Sale**

[www.bova-tech.com](http://www.bova-tech.com)

**(403) 332-1567**



**RED ACC 13B**  
*Tibbie*



Red ACC Tibbie 13B is out of a very productive red cow. This red, moderate framed cow is made correct and true. She has a style and broodiness combined with a very unique pedigree. Red Tibbie is a feminine easy fleshing cow with a perfect udder and great rib.

**U-2**  
**Reckoning** 149A



High selling Red Angus to Six Mile for \$46,000 for 1/2 interest.

Reckoning progeny are the right kind of cattle with a superior foot quality, added volume and very important- easy to market. The list of high sellers sired by Reckoning is very impressive due to how its progeny works in the real world and show ring. value.



**Daughters of Red U-2 Reckoning**



**Donor Care Facility**

**Embryo Collection, Freezing & Transplants**

**IVF - In Vitro Fertilization**

**Export Certified**

**In-Clinic & On Farm Services**

**Recipient Programs**

**Bova-Tech Ltd.**

P.O. Box 80142 Airdrie, Alberta T4B 2V8 Canada  
Tel: (403) 332-1567 E-mail: [info@bova-tech.com](mailto:info@bova-tech.com)





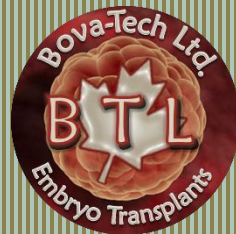
**Bova-Tech Ltd.**

**B T L**

**Embryos for Sale**

[www.bova-tech.com](http://www.bova-tech.com)

**(403) 332-1567**



## **RED ACC** *Tibbie* **13B**



Red ACC Tibbie 13B is out of a very productive red cow. This red, moderate framed cow is made correct and true. She has a style and broodiness combined with a very unique pedigree. Red Tibbie is a feminine easy fleshing cow with a perfect udder and great rib.



## **RREDS** **COMMON SENSE** **G933**

RREDS Common Sense G933 has all the mass and body of his sire. He is one of the most universal and complete bulls produced by Rhodes Red Angus. His mother is a coming 5 year old Code Red that hasn't missed. The Code red daughters have a way of raising high sellers.

Common Sense is one of the stoutest Seneca sons produced. If you are looking for the same body design as Seneca but want a bit more frame, Common Sense is a great choice. Great Angus character with high testosterone and athleticism.



**Donor Care Facility**

**Embryo Collection,  
Freezing &  
Transplants**

**IVF - In Vitro  
Fertilization**

**Export  
Certified**

**In-Clinic &  
On Farm  
Services**

**Recipient  
Programs**



**Bova-Tech Ltd.**

P.O. Box 80142 Airdrie, Alberta T4B 2V8 Canada

Tel: (403) 332-1567 E-mail: [info@bova-tech.com](mailto:info@bova-tech.com)





**Bova-Tech Ltd.**

**B T L**

**Embryos for Sale**

[www.bova-tech.com](http://www.bova-tech.com)

**(403) 332-1567**



## Red ACC **TIBBIE** 98B



Red ACC Tibbie 98B has clean front structure, smooth makeup and refinement. This cow is admired for her sweet makeup and feminine features yet she is moderate and beefy.

With her easy-fleshing ability and exceptional mothering traits, 98B is a donor you won't want to miss using.



**PIE**

**222**

**HOLLYWOOD**



Pie Hollywood is the world record selling Red Angus bull from the spring 2023 bull sale season, selling for \$400,000 valuation. His record setting appraisal is the result of his combination of curve bending calving ease and growth, breed leading carcass, captivating phenotype and is backed by the renown Abigrace cow family. We were not drawn to the bull by his outstanding numbers, but they are off the charts. We appreciate Hollywood for his massive phenotype and you couldn't put a better foot on a Red Angus bull.

**Donor Care  
Facility**

**Embryo Collection,  
Freezing &  
Transplants**

**IVF - In Vitro  
Fertilization**

**Export  
Certified**

**In-Clinic &  
On Farm  
Services**

**Recipient  
Programs**



**Bova-Tech Ltd.**

**P.O. Box 80142 Airdrie, Alberta T4B 2V8 Canada**

**Tel: (403) 332-1567 E-mail: [info@bova-tech.com](mailto:info@bova-tech.com)**





**Bova-Tech Ltd.**

**B T L**

**Embryos for Sale**

[www.bova-tech.com](http://www.bova-tech.com)

**(403) 332-1567**



## Red ACC **Tibbie** 98B



Red ACC Tibbie 98B has clean front structure, smooth makeup and refinement. This cow is admired for her sweet makeup and feminine features yet she is moderate and beefy.

With her easy-fleshing ability and exceptional mothering traits, 98B is a donor you won't want to miss using.



**SSS**

**TYCOON**

**225E**

Tycoon comes from the outstanding SSS program and has been used extensively in W Sunrise Angus and Y Coulee programs. He has an impressive profile, proud front and great feet and soundness with an impressive calving ease sire with a hard to fault pedigree. He is a dark red, masculine sire, that carries himself flawlessly in the bull pen. Consistency and phenotype speak for itself.



**Donor Care  
Facility**

**Embryo Collection,  
Freezing &  
Transplants**

**IVF - In Vitro  
Fertilization**

**Export  
Certified**

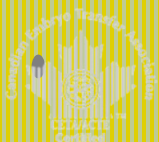
**In-Clinic &  
On Farm  
Services**

**Recipient  
Programs**

**Bova-Tech Ltd.**

**P.O. Box 80142 Airdrie, Alberta T4B 2V8 Canada**

**Tel: (403) 332-1567 E-mail: [info@bova-tech.com](mailto:info@bova-tech.com)**





**Bova-Tech Ltd.**

**B T L**

**Embryos for Sale**

[www.bova-tech.com](http://www.bova-tech.com)

**(403) 332-1567**



## **Red ACC Tibbie 98B**



Red ACC Tibbie 98B has clean front structure, smooth makeup and refinement. This cow is admired for her sweet makeup and feminine features yet she is moderate and beefy.

With her easy-fleshing ability and exceptional mothering traits, 98B is a donor you won't want to miss using.

## **RREDS COMMON SENSE G933**

RREDS Common Sense G933 has all the mass and body of his sire. He is one of the most universal and complete bulls produced by Rhodes Red Angus. His mother is a coming 5 year old Code Red that hasn't missed. The Code red daughters have a way of raising high sellers.

Common Sense is one of the stoutest Seneca sons produced. If you are looking for the same body design as Seneca but want a bit more frame, Common Sense is a great choice. Great Angus character with high testosterone and athleticism.



**Donor Care  
Facility**

**Embryo Collection,  
Freezing &  
Transplants**

**IVF - In Vitro  
Fertilization**

**Export  
Certified**

**In-Clinic &  
On Farm  
Services**

**Recipient  
Programs**



**Bova-Tech Ltd.**

**P.O. Box 80142 Airdrie, Alberta T4B 2V8 Canada**  
**Tel: (403) 332-1567 E-mail: [info@bova-tech.com](mailto:info@bova-tech.com)**





**Red CCC**  
**530C**

**Towaw Larkaba**



**PIE**

**222**

**HOLLYWOOD**



Red CCC Towaw Larkaba 530C is dark red, deep bodied, long and feminine with a nice udder. She was a reserve Champion heifer at the 2016 Olds Fall Classic and Reserved Junior Yearling heifer at Farmfair International the same year.

Her maternal grandsire, Red TerRon Digger 11L, was a direct son of the great Ter-Ron Brandy 11C cow, and is the grand sire of the \$80,000 Red Cockburn Ribeye bull. He bred until he was 11 years old and was one of the soundest structured bulls ever used at Towaw. Her grandam, Larkaba 10M, is a direct Red Towaw Indeed 104H daughter.

Pie Hollywood is the world record selling Red Angus bull from the spring 2023 bull sale season, selling for \$400,000 valuation. His record setting appraisal is the result of his combination of curve bending calving ease and growth, breed leading carcass, captivating phenotype and is backed by the renown Abigrace cow family. We were not drawn to the bull by his outstanding numbers, but they are off the charts. We appreciate Hollywood for his massive phenotype and you couldn't put a better foot on a Red Angus bull.

**Semen  
 Production  
 & Freezing**

**Donor Care  
 Facility**

**Embryo Collection,  
 Freezing & Transplants**

**IVF - In Vitro  
 Fertilization**

**Export  
 Certified**

**In-Clinic & On  
 Farm Services**

**Recipient  
 Programs**



**Bova-Tech Ltd.**

**P.O. Box 80142 Airdrie, Alberta T4B 2V8 Canada**

**Tel: (403) 332-1567 E-mail: [info@bova-tech.com](mailto:info@bova-tech.com)**





**Bova-Tech Ltd.**

**B T L**

**Embryos for Sale**

[www.bova-tech.com](http://www.bova-tech.com)

**(403) 332-1567**



**Red**

**LONE STONE**

**Beula**

**35H**

Red Lone Stone Beula 35H is a very well-made female that is well-balanced. Beula is the complete package, an impressive cow with a small frame build (5.0 to 5.5 frame score). She has a very nice temperament, beautiful coat, solid feet, and perfect udder. The potential for 35H to become a very productive cow and raise outstanding offspring is already proven with her well-formed bull calf that hit the ground this year.



**PIE**

**222**

**HOLLYWOOD**

Pie Hollywood is the world record selling Red Angus bull from the spring 2023 bull sale season, selling for \$400,000 valuation. His record setting appraisal is the result of his combination of curve bending calving ease and growth, breed leading carcass, captivating phenotype and is backed by the renown Abigrace cow family. We were not drawn to the bull by his outstanding numbers, but they are off the charts. We appreciate Hollywood for his massive phenotype and you couldn't put a better foot on a Red Angus bull.



**Donor Care  
Facility**

**Embryo Collection,  
Freezing &  
Transplants**

**IVF - In Vitro  
Fertilization**

**Export  
Certified**

**In-Clinic &  
On Farm  
Services**

**Recipient  
Programs**

**Bova-Tech Ltd.**

**P.O. Box 80142 Airdrie, Alberta T4B 2V8 Canada**

**Tel: (403) 332-1567 E-mail: [info@bova-tech.com](mailto:info@bova-tech.com)**





**Red**  
**LONE STONE**  
Beula 35H



Red Lone Stone Beula 35H is a very well made female that is well-balanced. Buela is the complete package, an impressive cow with a small frame build (5.0 to 5.5 frame score). She has a very nice temperament, beautiful coat, solid feet, and perfect udder. The potential for 35H to become a very productive cow and raise outstanding offspring is already proven with her well-formed bull calf that hit the ground this year.

**Silveiras** 1378  
**Mission Nexus**



Silveiras Mission Nexus needs no introduction to prove the impact he has made to Red Angus herds that were able to use him during the short time his semen was available. He has left a long term impact on the females in the Lost Creek herd, producing females that are angular, feminine with great udders, and a strong hip as they are producing high quality calves that will stay in the herd. With minimal amounts of semen available to the market, lots like this are far and few between.

Donor Care  
Facility

Embryo Collection,  
Freezing & Transplants

IVF - In Vitro  
Fertilization

Export  
Certified

In-Clinic & On  
Farm Services

Recipient  
Programs

**Bova-Tech Ltd.**

P.O. Box 80142 Airdrie, Alberta T4B 2V8 Canada  
Tel: (403) 332-1567 E-mail: [info@bova-tech.com](mailto:info@bova-tech.com)





Bova-Tech Ltd.

**B T L**

Embryos for Sale

[www.bova-tech.com](http://www.bova-tech.com)

(403) 332-1567



**IVF**

**Red**

**LONE STONE**

**Beula**

**35H**

**FEMALE  
SEXED**



Red Lone Stone Beula 35H is a very well made female that is well-balanced. Beula is the complete package, an impressive cow with a small frame build (5.0 to 5.5 frame score). She has a very nice temperament, beautiful coat, solid feet, and perfect udder. The potential for 35H to become a very productive cow and raise outstanding offspring is already proven with her well-formed bull calf that hit the ground this year.

**Red U2 284F**  
**DOMINION**

Red U2 Dominion 284F is an outcross sire who continues to make a name for himself as a sire who stamps his progeny with phenotype, foot quality, and stoutness. His pedigree has generations of maternal legends and a matron derived from a notable cow family known for fertility, calf performance, and udder quality.



Donor Care  
Facility

Embryo Collection,  
Freezing & Transplants

IVF - In Vitro  
Fertilization

Export  
Certified

In-Clinic & On  
Farm Services

Recipient  
Programs

**Bova-Tech Ltd.**

P.O. Box 80142 Airdrie, Alberta T4B 2V8 Canada

Tel: (403) 332-1567 E-mail: [info@bova-tech.com](mailto:info@bova-tech.com)





# Red Mar Mac 104E BONITA



The lead off female, and no coincidence the high seller bred heifer out of the Mar Mac 2018 female sale. Bonita 104E is an easy fleshing, thick, moderate framed feminine cow with lots of body depth and high performance EPDs. Weaning and yearling weight in the top 1% of the breed.

The Bonita cow family is well known for its maternal strength and breed consistency. Her dam, Bonita 65X, is one of the Canadian legends and high producing cow.



# Merit 1054J INVESTMENT

Merit Investment 1054J was the high selling bull at the Merit Bull Sale for \$85,000 in a hotly contested battle. His dam has done so much for the industry already with many top sellers for many folks.



Donor Care  
Facility

Embryo Collection,  
Freezing & Transplants

IVF - In Vitro  
Fertilization

Export  
Certified

In-Clinic & On  
Farm Services

Recipient  
Programs



# Bova-Tech Ltd.

# B T L



## IVF Embryos for Sale

[www.bova-tech.com](http://www.bova-tech.com)  
(403) 332-1567

Donor Care  
Facility

Embryo Collection,  
Freezing & Transplants

IVF - In Vitro  
Fertilization

Export  
Certified

In-Clinic & On  
Farm Services

Recipient  
Programs

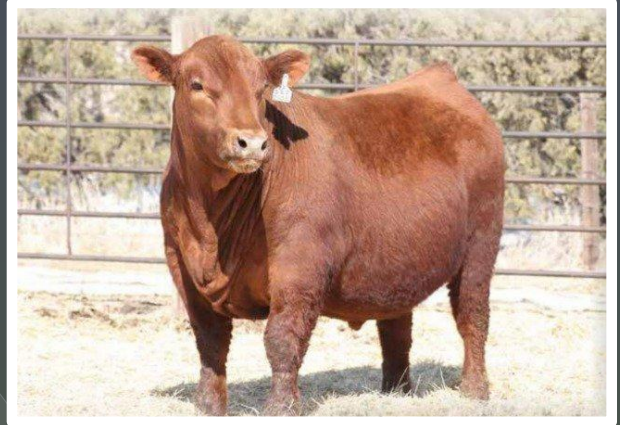
Red Mar Mac 104E  
**BONITA**

**IVF**  
USA, E.U & AUS  
Qualified

**PIE** 222  
HOLLYWOOD



The lead off female and no coincidence the high seller breed heifer out of the Mar Mac 2018 female sale. Bonita is an easy fleshing, thick, moderate a feminine cow with a lots of body depth and high performance EPDs with weaning and yearling weight on the top 1% of the breed. the Bonita cow family is well known for its maternal strength and breed consistency. Bonita 65X her dam, is one of the Canadian legends and high producing cow.



Pie Hollywood is the world record selling Red Angus bull from the spring 2023 bull sale season, selling for \$400,000 valuation. His record setting appraisal is the result of his combination of curve bending calving ease and growth, breed leading carcass, captivating phenotype and is backed by the renown Abigrace cow family. We were not drawn to the bull by his outstanding numbers, but they are off the charts. We appreciate Hollywood for his massive phenotype and you couldn't put a better foot on a Red Angus bull.



## Bova-Tech Ltd.

P.O. Box 80142 Airdrie, Alberta  
T4B 2V8 Canada

Tel: (403) 332-1567 E-mail: [info@bova-tech.com](mailto:info@bova-tech.com)





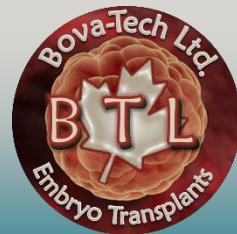
**Bova-Tech Ltd.**

**B T L**

**Embryos for Sale**

[www.bova-tech.com](http://www.bova-tech.com)

**(403) 332-1567**



**Maya**

**19H**

**BONITA**



**DUFF**

**1941**

**Red Wood**



Red Maya Bonita 19H has a strong maternal pedigree with solid conformation, partnered with calving ease and stayability. She has a moderate frame with thick top and square hip.

This is a cow with a great udder and milking ability. This female has powerful genetics that will leave you wanting more.

**DAM - Red Mar  
Mac Bonita 104E**

**SIRE - Mann  
Red Box 55C**



This Red Angus bull may be just as noble as the ancient redwood trees "Duff Redwood 1941". What a specimen he is in terms of depth of rib, fleshing ability and overall dimension in a moderate frame. Just like the coastal trees, you truly need to see Redwood for yourself to understand his overall quality and value. Duff Red Wood will undoubtedly leave deep roots in the beef industry

**Donor Care  
Facility**

**Embryo Collection,  
Freezing & Transplants**

**IVF - In Vitro  
Fertilization**

**Export  
Certified**

**In-Clinic & On  
Farm Services**

**Recipient  
Programs**



**Bova-Tech Ltd.**

**P.O. Box 80142 Airdrie, Alberta T4B 2V8 Canada**

**Tel: (403) 332-1567 E-mail: [info@bova-tech.com](mailto:info@bova-tech.com)**





Bova-Tech Ltd.

**B T L**

Embryos for Sale

[www.bova-tech.com](http://www.bova-tech.com)

(403) 332-1567



Red Minburn May 300Y is a full sister to the breed legend, Red Minburn Copenhagen! Copenhagen and another full sister took Agribition by storm in 2011 at a figure of \$67,000 for Copenhagen to U2 Ranch and Heart of the Valley. Copenhagen daughters were a highlight at the U2 dispersal bringing some long dollars while Copenhagen semen, while limited in it's availability has commanded over \$300 a straw. 300Y is an absolute mirrored image of what a Copenhagen daughter looks like. Sound, good footed, productive cows.



Red Cockburn Premium 3059. Premium's performance, presence, foot quality and overall mass make him unique. Combine that with the long line of consistent, fertile donor dams on both sides of his pedigree it truly sets him apart. The udder and foot quality runs deep in the Hauk cow family and the first Momentum daughters only add to the excitement. He was the lead bull in the Grand Champion pen at Agribition, Denver and the Medicine Hat pen show. Premium froze quality semen and measured 38cm scrotal at 12 months of age. Bolt epds Ce 11 bw -0.1 ww 75 yw 116 m 28.

Donor Care  
Facility

Embryo Collection,  
Freezing & Transplants

IVF - In Vitro  
Fertilization

Export  
Certified

In-Clinic & On  
Farm Services

Recipient  
Programs



**Bova-Tech Ltd.**

P.O. Box 80142 Airdrie, Alberta T4B 2V8 Canada

Tel: (403) 332-1567 E-mail: [info@bova-tech.com](mailto:info@bova-tech.com)





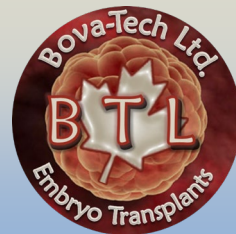
**Bova-Tech Ltd.**

**B T L**

**Embryos for Sale**

[www.bova-tech.com](http://www.bova-tech.com)

**(403) 332-1567**



**Red Scotts**



**1055Y**

**CJB JEWEL**

**KJHT FCF**

*Alibi*



Jewel 1055Y is an exceptional female in many ways; she carries a strong maternal pedigree, performance and structure to lead a program to the next level. She is moderate frame with thick top and square hip.

This is a cow with a superior udder and milking ability. If you want to talk about cow power, this female is just that.



Alibi is the first Rioja son in Canada. Another outstanding individual out of a lead donor cow from Shady Knoll Cattle Co. SRA Paintbucket and sired by Rojas Rioja 6052. Riojas genetics in in a high demand and very marketable in Canada and across the USA. SRA Paintbucket is none other than Power Take Off's Dam. Semen of this exclusive sire is limited with just a few straws offered for sale during 2020. Alibi is a stout bull with a clean front end and balanced EPDs.

**Donor Care  
Facility**

**Embryo Collection,  
Freezing &  
Transplants**

**IVF - In Vitro  
Fertilization**

**Export  
Certified**

**In-Clinic &  
On Farm  
Services**

**Recipient  
Programs**



**Bova-Tech Ltd.**

**P.O. Box 80142 Airdrie, Alberta T4B 2V8 Canada**

**Tel: (403) 332-1567 E-mail: [info@bova-tech.com](mailto:info@bova-tech.com)**





# Bova-Tech Ltd.

# B T L



## Embryos for Sale

[www.bova-tech.com](http://www.bova-tech.com)

(403) 332-1567

**Red SSF**  
271A  
**SCOTTS KARI**

**DUFF** 1941  
**Red Wood**



Kari 271A is a moderate framed cow carrying a lot of performance, she ranks top 2% of the breed for weaning weight, top 3% for yearling weight and top 4% for Maternal. She has an excellent feet and udder, very sound and well-made cow with an EPD on the top 1% for stay-ability.

Kari 271A has the phenotypic quality and genetic profile to enhance any program.



This Red Angus bull may be just as noble as the ancient redwood trees "Duff Redwood 1941". What a specimen he is in terms of depth of rib, fleshing ability and overall dimension in a moderate frame. Just like the coastal trees, you truly need to see Redwood for yourself to understand his overall quality and value.

Duff Redwood 1941 will undoubtedly leave deep roots in the beef industry.

**Donor Care  
Facility**

**Embryo Collection,  
Freezing & Transplants**

**IVF - In Vitro  
Fertilization**

**Export  
Certified**

**In-Clinic & On  
Farm Services**

**Recipient  
Programs**



## Bova-Tech Ltd.

P.O. Box 80142 Airdrie, Alberta  
T4B 2V8 Canada

Tel: (403) 332-1567 E-mail: [info@bova-tech.com](mailto:info@bova-tech.com)





# Bova-Tech Ltd.

# B T L



## Embryos for Sale

[www.bova-tech.com](http://www.bova-tech.com)

(403) 332-1567

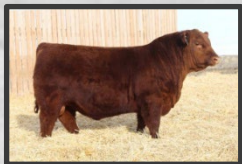
**Red SSF**  
271A  
**SCOTT'S KARI**



Kari 271A is a moderate frame cow carrying a lot of performance, she ranks top 2% of the breed for weaning weight, top 3 % for yearling weight and top 4% for Maternal.

She has an excellent feet and udder, very sound and well-made cow with an EPD on the top 1% for stayability.

Kari 271A has the phenotypic quality and genetic profile to enhance any program.



Son of MRLA  
Resource sold for  
\$130,000  
March 2020

**Red MRLA**  
**Resource**  
137E



Resource's influence has been widely accepted across North America. His daughters at the U2 Dispersal topped at \$23,000 with 30 Open Resource daughters averaging \$9,000 at the U2 Dispersal.

A performance sire in a breed that has done a great job on calving ease and maternal instinct.

- Top 55% of the breed for weaning weight
- Top 15% of the breed for yearling weight
- Top 15% of the breed for scrotal circumference
- Top 8% of the breed for carcass weight
- Top 35% of the breed for ribeye
- Top 3% of the breed for mature weight

**Donor Care  
Facility**

**Embryo Collection,  
Freezing & Transplants**

**IVF - In Vitro  
Fertilization**

**Export  
Certified**

**In-Clinic & On  
Farm Services**

**Recipient  
Programs**

## Bova-Tech Ltd.

P.O. Box 80142 Airdrie, Alberta T4B 2V8 Canada  
Tel: (403) 332-1567 E-mail: [info@bova-tech.com](mailto:info@bova-tech.com)





**Bova-Tech Ltd.**

**B T L**



**Embryos for Sale**

[www.bova-tech.com](http://www.bova-tech.com)

**(403) 332-1567**

**Red SSF**  
**271A**  
**SCOTTS KARI**

**RED U-2**  
**Authentic**  
**139A**



Kari 271A is a moderate framed cow carrying a lot of performance, she ranks top 2% of the breed for weaning weight, top 3% for yearling weight and top 4% for Maternal.

She has excellent feet and udder, and is very sound and a well-made cow with an EPD on the top 1% for stay-ability. Kari 271A has the phenotypic quality and genetic profile to enhance any program.



Maternal greatness and sheer power are combined in this leading sire, Red U-2 Authentic 139A.

Authentic was a past high-selling bull at U2 and has gone on to be a potent breeder that has had positive production results for the three progressive breeders that own him. Phenotypically he is the ideal Red Angus sire, super clean fronted with an attractive head that will add length, power and over all completeness to his progeny. He is out of one of the great donors at U2, Stormy 7202T, and complimented by a stacked maternal pedigree!

**Donor Care  
Facility**

**Embryo Collection,  
Freezing & Transplants**

**IVF - In Vitro  
Fertilization**

**Export  
Certified**

**In-Clinic & On  
Farm Services**

**Recipient  
Programs**

**Bova-Tech Ltd.**

**P.O. Box 80142 Airdrie, Alberta T4B 2V8 Canada**

**Tel: (403) 332-1567 E-mail: [info@bova-tech.com](mailto:info@bova-tech.com)**





**Bova-Tech Ltd.**

**B T L**



**Embryos for Sale**

[www.bova-tech.com](http://www.bova-tech.com)

**(403) 332-1567**

**Red SSF**  
**271A**  
**SCOTTS KARI**

**Red U2** **284F**  
**DOMINION**

**IVF**



Kari 271A is a moderate framed cow carrying a lot of performance, she ranks top 2% of the breed for weaning weight, top 3% for yearling weight and top 4% for Maternal.

She has an excellent feet and udder, very sound and well-made cow with an EPD on the top 1% for stay-ability.

Kari 271A has the phenotypic quality and genetic profile to enhance any program.

**FEMALE  
SEXED**

Red U2 Dominion 284F is an outcross sire who continues to make a name for himself as a sire who stamps his progeny with phenotype, foot quality, and stoutness.

His pedigree has generations of maternal legends and a matron derived from a notable cow family known for fertility, calf performance, and udder quality.

**Donor Care  
Facility**

**Embryo Collection,  
Freezing & Transplants**

**IVF - In Vitro  
Fertilization**

**Export  
Certified**

**In-Clinic & On  
Farm Services**

**Recipient  
Programs**



**Bova-Tech Ltd.**

**P.O. Box 80142 Airdrie, Alberta  
T4B 2V8 Canada**

**Tel: (403) 332-1567 E-mail: [info@bova-tech.com](mailto:info@bova-tech.com)**





**Bova-Tech Ltd.**

**B T L**



**Embryos for Sale**

[www.bova-tech.com](http://www.bova-tech.com)

**(403) 332-1567**

**Red SSF  
271A  
SCOTTS KARI**

**RED WHEEL  
CREED 214C**



Kari 271A is a moderate frame cow carrying a lot of performance, she ranks top 2% of the breed for weaning weight, top 3 % for yearling weight and top 4% for Maternal.

She has an excellent feet and udder, very sound and well-made cow with an EPD on the top 1% for stayability.

Kari 271A has the phenotypic quality and genetic profile to enhance any program.



Herd sires with the ability to combine the power that Red Wheel Creed possesses with exceptional maternal strength in an outcross pedigree are rare to find. Creed has the length of spine, muscle expression, bone and foot size which he transmits into his calves. This bull is backed by an exceptional dam and cow family. Creed's dam, Black Wheel Jestress 1y is a herd bull producing female. The Jestress cow family is noted for exceptional udders and hoof quality and being big ribbed, productive females. A few straws of semen were available during the Pinnacle Sale in 2018, the quest for the very best Red Angus seedstock in Canada may be found. the significance of this great breeding bull is fully demonstrated throughout the pedigree, statistical information and the footnote discussion. this breeding bull, with progeny on the ground, is an opportunity to obtain the influence of one of the most dynamic breeding bulls in the industry today.

**Donor Care  
Facility**

**Embryo Collection,  
Freezing & Transplants**

**IVF - In Vitro  
Fertilization**

**Export  
Certified**

**In-Clinic & On  
Farm Services**

**Recipient  
Programs**



**Bova-Tech Ltd.**

**P.O. Box 80142 Airdrie, Alberta  
T4B 2V8 Canada**

**Tel: (403) 332-1567 E-mail: [info@bova-tech.com](mailto:info@bova-tech.com)**





**Bova-Tech Ltd.**

**B T L**

**Embryos for Sale**

[www.bova-tech.com](http://www.bova-tech.com)

**(403) 332-1567**



**RED U2Q  
PLAYBOY  
2197K**



With a whopping 68 registered progeny in Canada alone, Red U2 Anexa 439A knows she is special.

Responsible for so many top high sellers such as Blue Collar, Attractive, Don Julio, Fringe, Convo, Cabo, Patron, and Rocky, to name a few. She possesses a world-class feminine skull, hind leg, fertility, and foot design. Many daughters are breeding at top with multiple donor daughters.



Red U2Q Playboy 2197K is a benefit-the-breed type of bull with a beautiful, clean design yet expansive muscle shape and exceptional front end and foot structure.

He was the \$62,000 sale feature from the U2 Quality Seedstock 2023 bull sale. His sire Red U2 Knockin' Boots 368G X his dam Red U2Q Queen 68H is a recipe for fleshy females with exceptional structure, fertility and udder design.

**Donor Care  
Facility**

**Embryo Collection,  
Freezing & Transplants**

**IVF - In Vitro  
Fertilization**

**Export  
Certified**

**In-Clinic & On  
Farm Services**

**Semen  
Production**



**Bova-Tech Ltd.**

**P.O. Box 80142 Airdrie, Alberta T4B 2V8 Canada**

**Tel: (403) 332-1567 E-mail: [info@bova-tech.com](mailto:info@bova-tech.com)**

